






# THE Davidson

AT THE PARKE AT WESTPORT AT FORD'S COLONY



-  3 - 4 Bedrooms
-  2.5 - 3 Bathrooms
-  2,897 Square Feet
-  2 Car Garage
-  Levels



Welcome to the Davidson, a one level home like nothing you've experienced before. Discover the countless ways to personalize your home the moment you walk through the front door. A formal dining room is off to one side, while a living room flex space is on the other, perfect for your home office or to cozy up with a good book.

The open concept kitchen and family room will fit all your family friends while you entertain or enjoy the game. The kitchen has ample cabinet space, a large kitchen island, walk-in pantry, and breakfast nook. You'll find your primary bedroom retreat tucked away with large walk-in closet and spa-like primary bath with dual vanities.

Two other bedrooms can be found on the opposite side of the home with an additional full bath. The Davidson has a huge second floor with unfinished/conditioned storage that can be converted to a loft or additional bedroom with full bath.

[eagleofva.com](http://eagleofva.com)

# THE Davidson

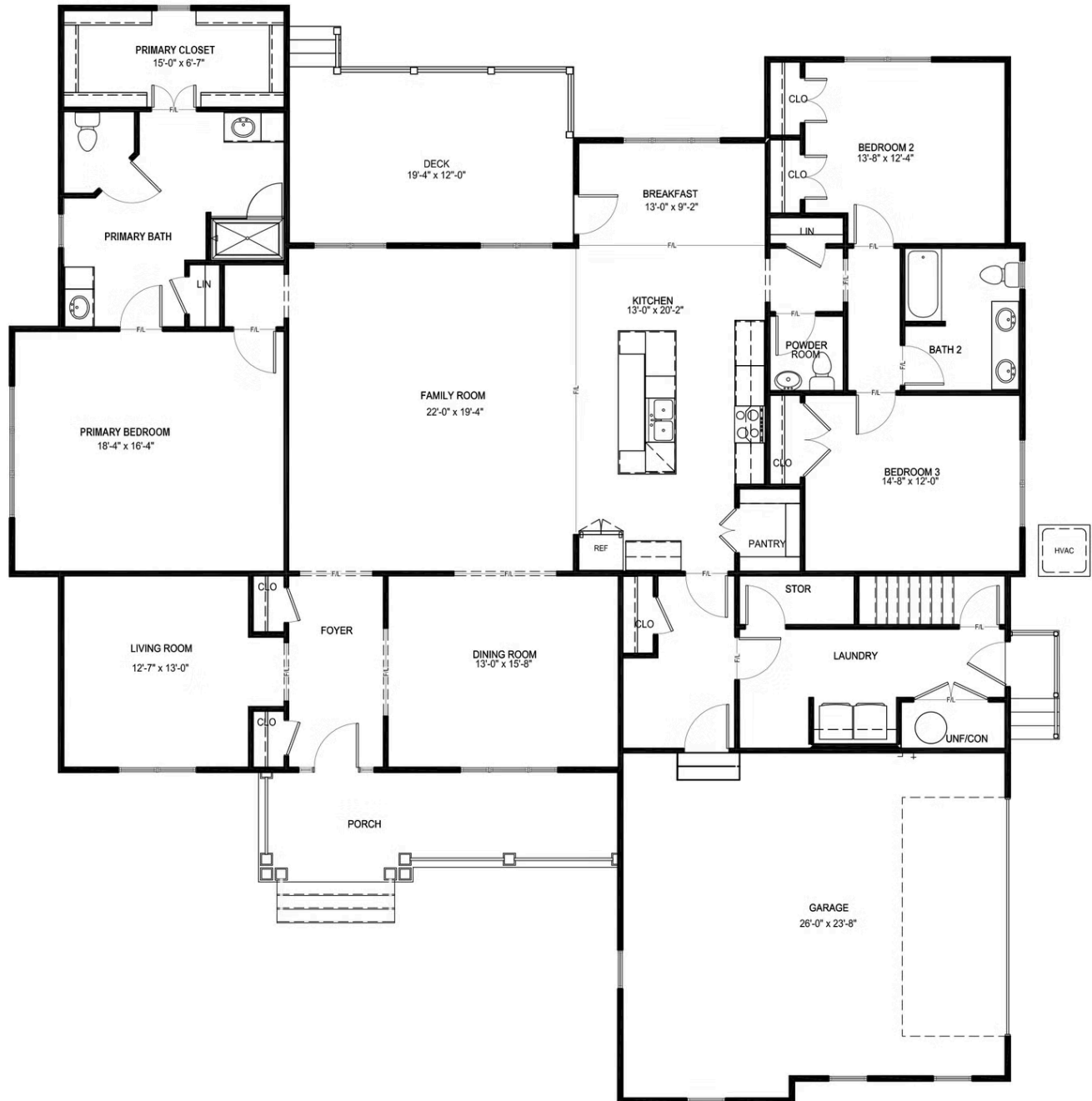
AT THE PARKE AT WESTPORT AT FORD'S COLONY



[eagleofva.com](http://eagleofva.com)

This information is deemed reliable but not guaranteed. All details, dimensions, square footage, illustrations and pricing are approximate and may vary from actual plans and specifications. Contact an Eagle Sales Consultant for details. Current information as of 2nd August 2025

FIRST FLOOR



SECOND FLOOR

