





# 3395 Westport

AT THE PARKE AT WESTPORT AT FORD'S COLONY



-  5 Bedrooms
-  4.5 Bathrooms
-  4106 Square Feet
-  3 Car Garage

**\$1,290,000**



Welcome home to the Pembroke! This spacious floor plan has all the space you need. Enjoy a grand entrance into your two-story foyer. You'll find a convenient bedroom tucked to one side, perfect for a guest room, home office, home gym, library, or any other space you can imagine. On the other side is your formal dining room which connects to a Butler's Pantry with spacious walk-in pantry. The Kitchen features ample cabinet space and a huge island overlooking the breakfast nook and family room. You're mud room is tucked away off of the kitchen with access to your 3-car garage. Head on to the second floor where you will find the primary bedroom you've been dreaming of with a huge attached primary bath with dual vanities, two walk-in closets, and multiple layouts to choose from. Three additional bedrooms (one with its own private bath), a full bath, and laundry room complete the floor. There's a large rec room for even more space to relax in and make your own.

## Features of this Home

- Second floor primary suite with Serenity Bath featuring expanded walk-in shower with double recessed shower niche, freestanding tub, and separate vanities
- Gas fireplace in family room
- Open kitchen with large island, tapered wood hood, contemporary crown molding and more
- GE Stainless steel appliances with all-gas range, Sharp microwave drawer oven, and Cafe dishwasher
- Butler's Pantry and second pantry with custom wood shelves
- Morning Room

[eagleofva.com](http://eagleofva.com)

# 3395 Westport

AT THE PARKE AT WESTPORT AT FORD'S COLONY



## FIRST FLOOR



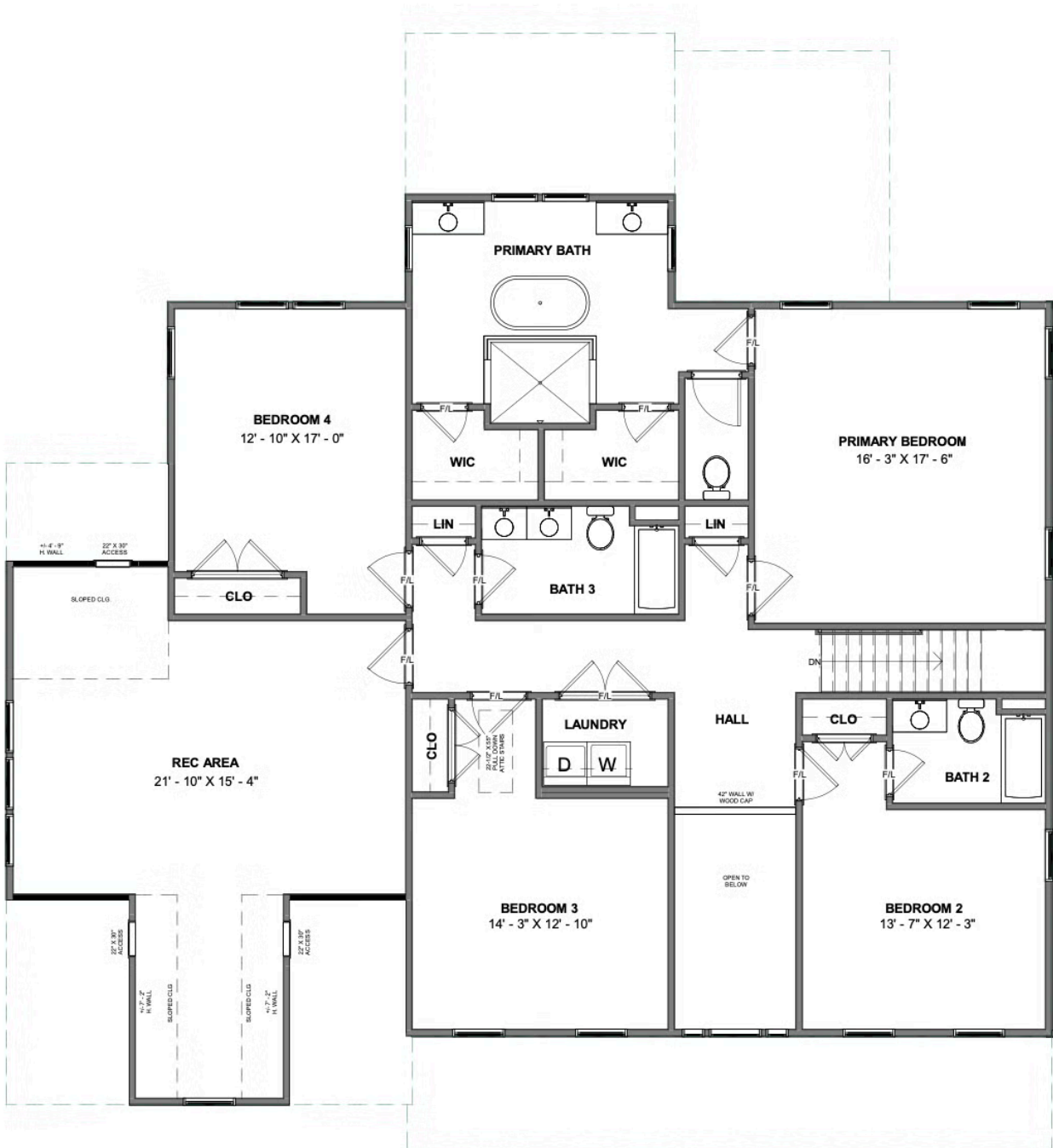
[eagleofva.com](http://eagleofva.com)

# 3395 Westport

AT THE PARKE AT WESTPORT AT FORD'S COLONY



## SECOND FLOOR



[eagleofva.com](http://eagleofva.com)