





3391 Westport

AT THE PARKE AT WESTPORT AT FORD'S COLONY



-  5 Bedrooms
-  4.5 Bathrooms
-  4088 Square Feet
-  3 Car Garage

\$1,308,733



Welcome home to the Pembroke! This spacious floor plan has all the space you need, and plenty of opportunities to personalize it to match your lifestyle. Enjoy a grand entrance into your two-story foyer. You'll find a convenient first floor bedroom and full bath. On the other side is your formal dining room which connects to a Butler's Pantry with spacious walk-in pantry. The Kitchen features ample cabinet space and a huge island overlooking the breakfast nook and family room. You're mud room is tucked away off of the kitchen with access to your 3-car garage. Head on to the second floor where you will find the primary bedroom you've been dreaming of with a huge attached primary bath with dual vanities, two walk-in closets, enlarged walk-in shower and freestanding tub. Three additional bedrooms (one with its own private bath), a full bath, and laundry room complete the floor. There's also a large rec room for even more space to relax in and make your own.

Features of this Home

- Second Floor Primary Suite with Serenity Bath
- Open Kitchen with large island, under cabinet lighting, gas plumbing for range and pre-wire for future pendants over island
- Morning Room and 12'x14' rear deck
- Gas fireplace with high definition video package above in family room
- LED recessed lighting package with dimmer switch in family room, primary bedroom, and rec room
- Laundry sink in garage

eagleofva.com

3391 Westport

AT THE PARKE AT WESTPORT AT FORD'S COLONY



FIRST FLOOR



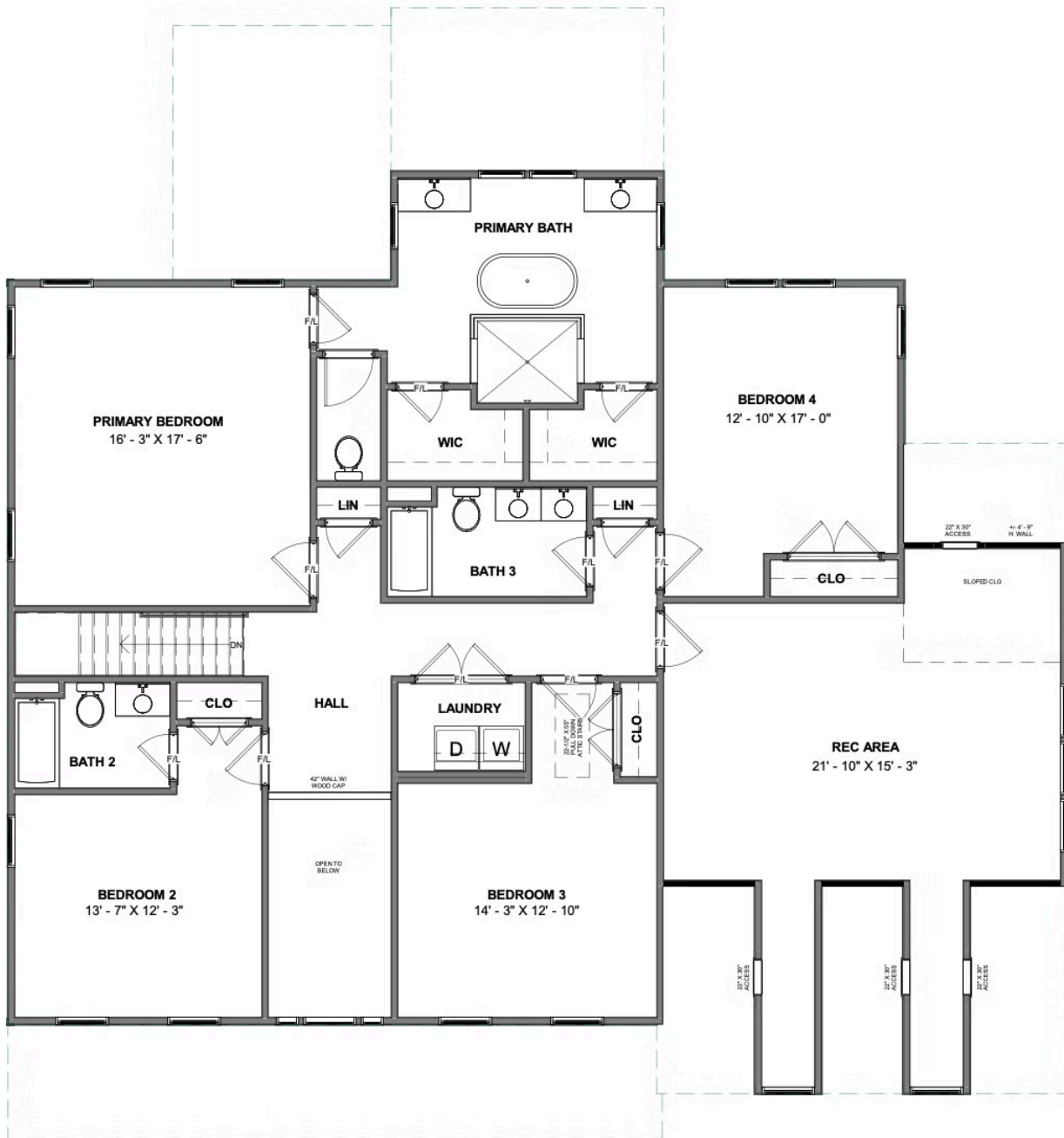
eagleofva.com

3391 Westport

AT THE PARKE AT WESTPORT AT FORD'S COLONY



SECOND FLOOR



eagleofva.com