





3387 Westport

AT THE PARKE AT WESTPORT AT FORD'S COLONY



-  3 Bedrooms
-  2.5 Bathrooms
-  2808 Square Feet
-  2 Car Garage

\$1,276,443



Welcome to the Davidson, a one level home like nothing you've experienced before. Discover the countless ways to personalize your home the moment you walk through the front door. A formal dining room is off to one side, while a living room flex space is on the other, perfect for your home office or to cozy up with a good book.

The open concept kitchen and family room will fit all your family friends while you entertain or enjoy the game. The kitchen has ample cabinet space, a large kitchen island, walk-in pantry, and breakfast nook. You'll find your primary bedroom retreat tucked away with large walk-in closet and spa-like primary bath with dual vanities and a freestanding tub. Two other bedrooms can be found on the opposite side of the home with an additional full bath. The Davidson has a huge second floor with unfinished/conditioned storage that can be converted to a loft or additional bedroom with full bath.

Features of this Home

- First floor primary suite with expansive walk-in closet, and Serenity Bath featuring expanded walk-in shower with bench seat, dual vanities, freestanding tub and separate water closet
- Kitchen features gas plumbing for range, under cabinet receptacles, pre-wire for future pendants over island, and walk-in pantry
- Gas fireplace in family room with high definition video package above
- Craftsman wainscoting in dining room
- Lanai off of rear of home
- Second floor features a large unfinished conditioned storage area, rough-in for a full bath, and a large unfinished unconditioned storage area

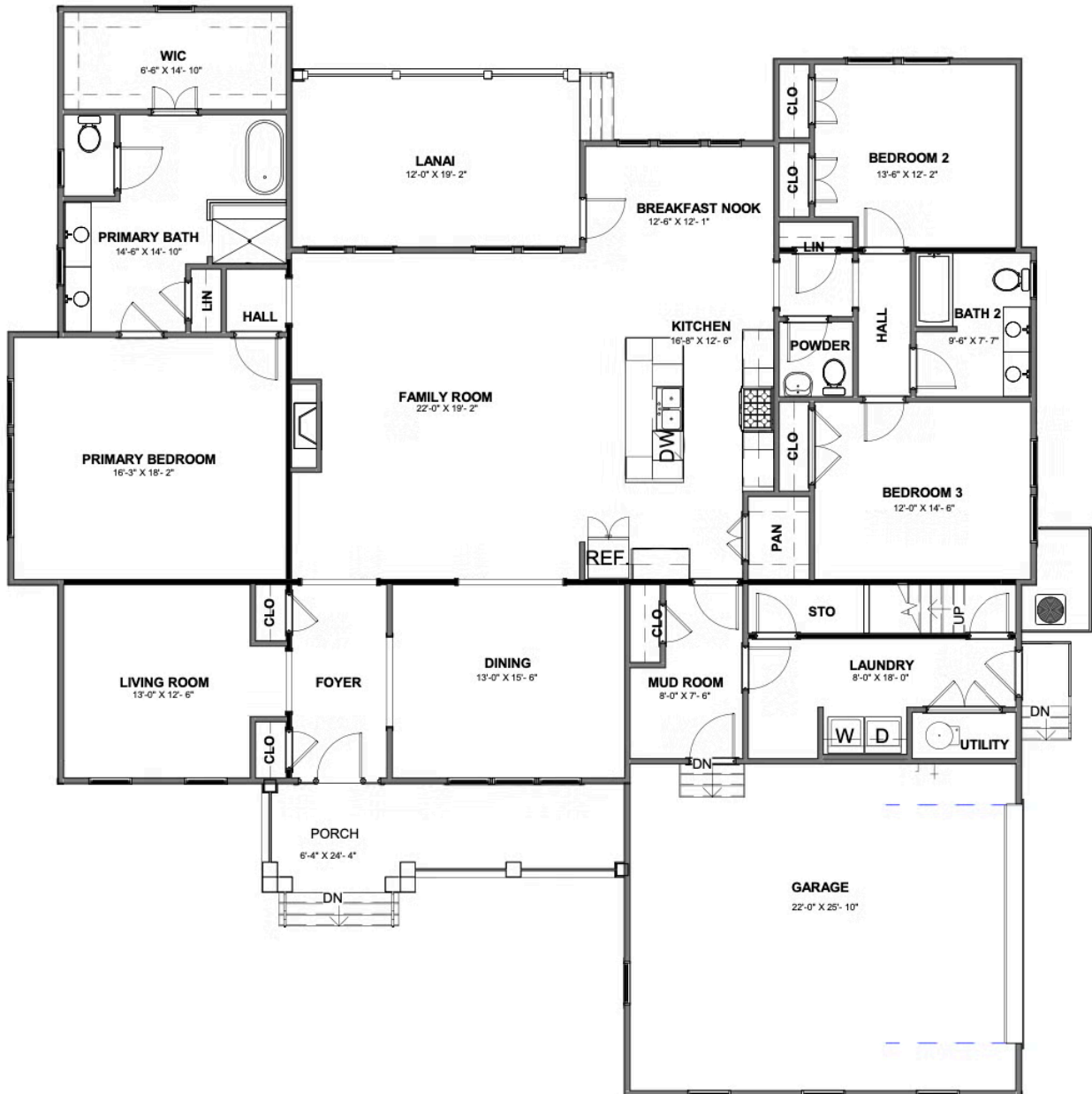
eagleofva.com

3387 Westport

AT THE PARKE AT WESTPORT AT FORD'S COLONY



FIRST FLOOR



eagleofva.com

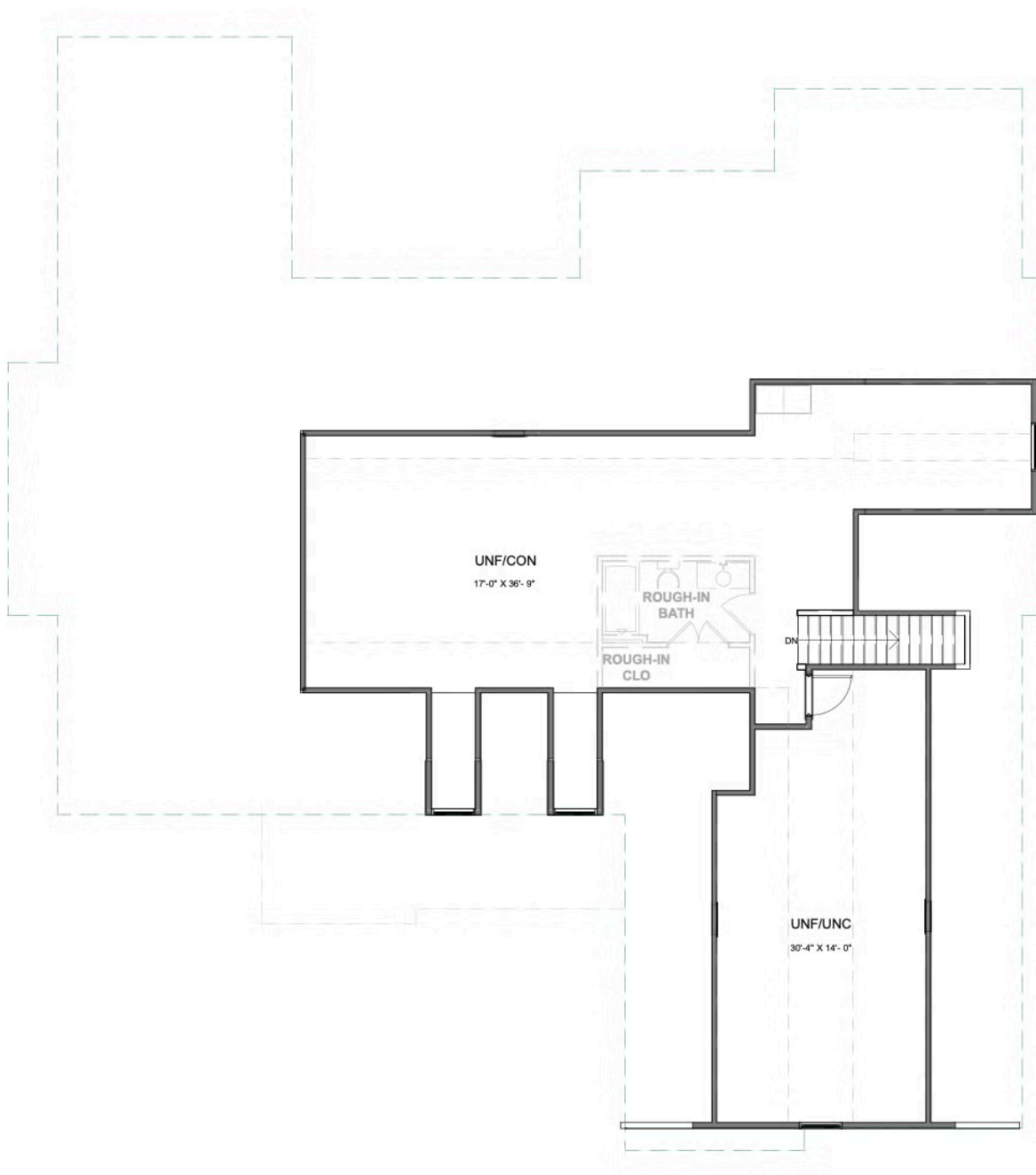
This information is deemed reliable but not guaranteed. All details, dimensions, square footage, illustrations and pricing are approximate and may vary from actual plans and specifications. Contact an Eagle Sales Consultant for details. Current information as of 22nd January 2026

3387 Westport

AT THE PARKE AT WESTPORT AT FORD'S COLONY



SECOND FLOOR



eagleofva.com

This information is deemed reliable but not guaranteed. All details, dimensions, square footage, illustrations and pricing are approximate and may vary from actual plans and specifications. Contact an Eagle Sales Consultant for details. Current information as of 22nd January 2026