





129 St. Annes

AT THE PARKE AT CYPRESS CREEK



-  3 Bedrooms
-  2.5 Bathrooms
-  2391 Square Feet
-  2 Car Garage

\$539,900



MOVE-IN READY! From the joys of empty nesting to the pleasures of easy living, it all comes home at Stamford, a 2-story plan featuring 3-bedrooms, 2.5 baths, a 2-car courtyard garage, and over 2,300 square feet. The foyer opens to the heart of the home, a true chef's kitchen ready to whip up a post-round snack or holiday feast with all the trimmings. Not to be outdone, the spacious family room and added screened porch are made for leisure, with a dining room perfect for meals both formal and relaxed. A large first floor primary suite redefines "roomy" with an equally generous Serenity primary bath with enlarged shower and walk-in closet. Two additional bedrooms and a full bath await upstairs, while a half bath and laundry room off the garage complete the home.

Features of this Home

- First floor primary bedroom
- Serenity primary bath with enlarged shower
- Screened porch

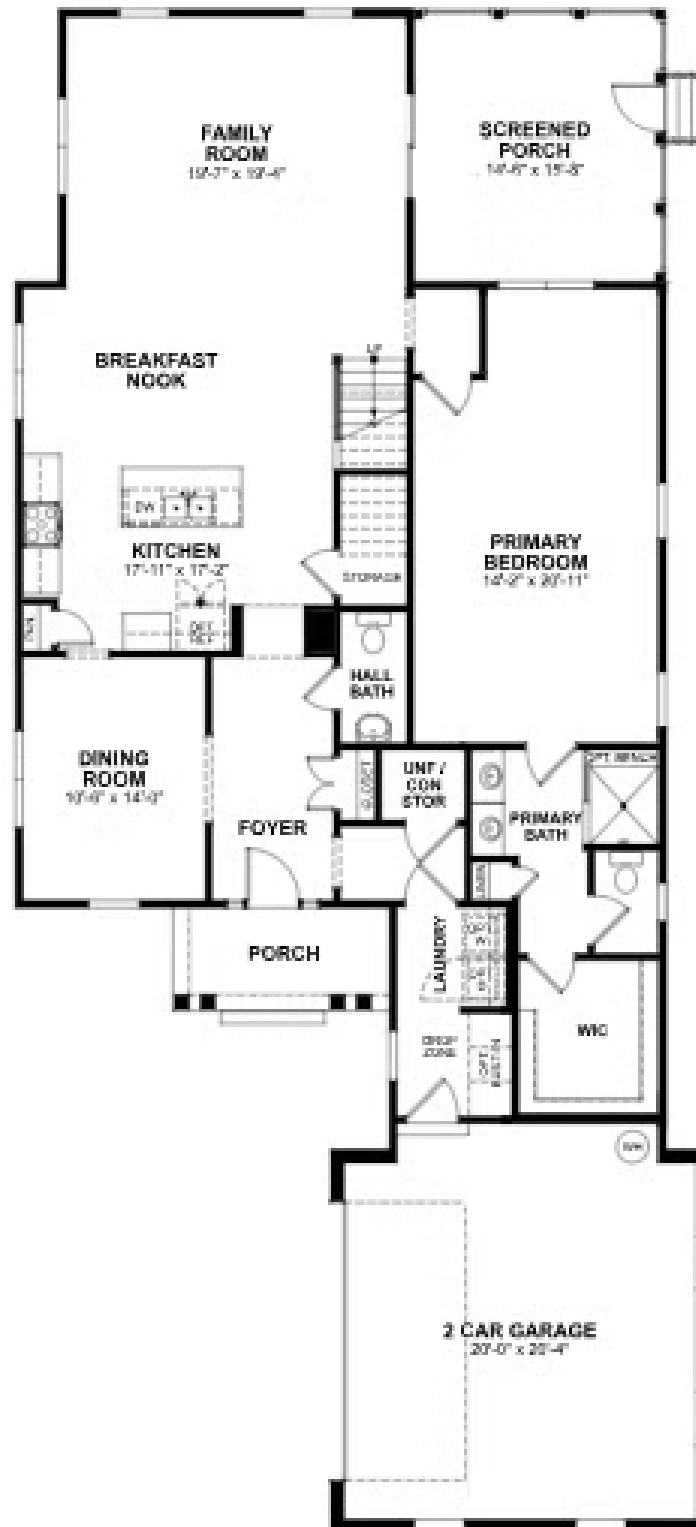
eagleofva.com

129 St. Annes

AT THE PARKE AT CYPRESS CREEK



FIRST FLOOR



eagleofva.com

This information is deemed reliable but not guaranteed. All details, dimensions, square footage, illustrations and pricing are approximate and may vary from actual plans and specifications. Contact an Eagle Sales Consultant for details. Current information as of 25th April 2025

SECOND FLOOR

