





# 1019 Cypress Creek Pkwy

AT CYPRESS CREEK



# eagle

-  4 Bedrooms
-  3.5 Bathrooms
-  3562 Square Feet
-  2 Car Garage

## \$829,000



**Move-in ready** WATER VIEW home! This home is a perfect, spacious yet cozy, rancher! The "Wellington" plan features 4-bedrooms, 3.5 baths. The main level features a open kitchen flowing into the great room with a large morning room off of the breakfast nook, formal dining areas, butler's pantry, huge pantry for extra storage and a sizable mudroom/laundry room. This home has an abundance of natural light and has amazing views of Cypress Creek. Beautifully designed, high-end finishes chosen by our in-house professional design team. You will love coming home to this well thought out floorplan in the beautiful golf course community, overlooking the water from your back deck, primary bedroom or living areas.

### Features of this Home

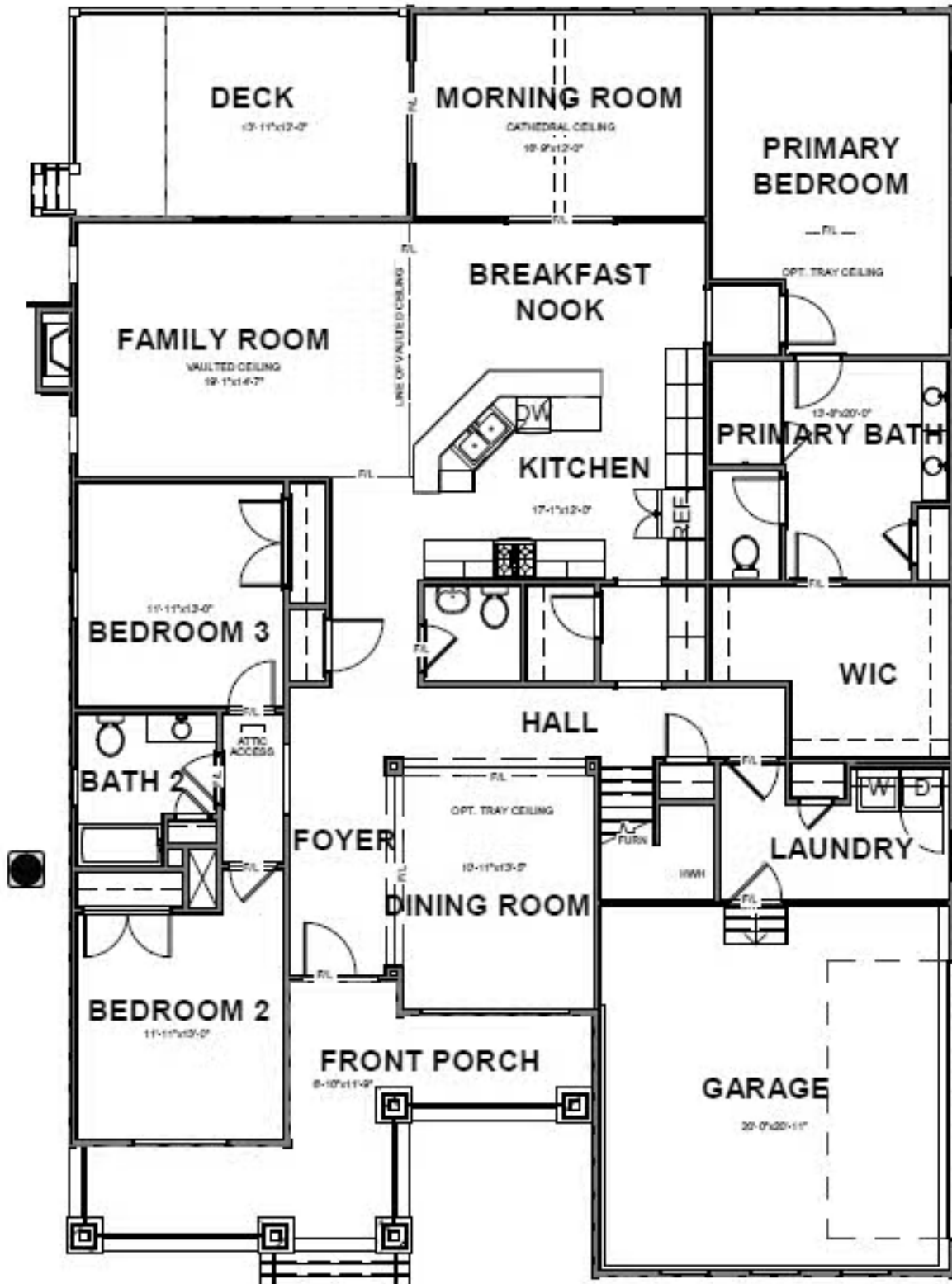
- Deluxe primary shower
- Fireplace in family room
- Coffered ceiling in family room
- Upgraded flooring throughout the main floor
- Luxury cabinets and countertops in kitchen and baths

eagleofva.com

# 1019 Cypress Creek Pkwy eagle

AT CYPRESS CREEK

## FIRST FLOOR



eagleofva.com

This information is deemed reliable but not guaranteed. All details, dimensions, square footage, illustrations and pricing are approximate and may vary from actual plans and specifications. Contact an Eagle Sales Consultant for details. Current information as of 25th April 2024



## SECOND FLOOR

