





12441 Bluffton Ridge Court

AT THE BLUFFTONS



-  3 Bedrooms
-  4.5 Bathrooms
-  4460 Square Feet
-  2 Car Garage

\$1,890,000



MOVE-IN READY! This beautiful home is part of the signature collection of tailored homes, designed by nationally recognized Allison Ramsey Architects, and individually crafted with an attention to detail all appreciate but few achieve. Classical yet contemporary, as if they've been here for generations - and will be for countless to come. Welcome home to The Old Oyster Retreat at The Blufftons! This home features a welcoming full front porch, which leads into the grand 2-story foyer. The family room features a full masonry wood burning brick fireplace, built in cabinetry, and inset bookshelves of the entrance into the dreamy chef's kitchen. Enter the kitchen to be greeted by a stately center island with seating, Sub-Zero 48" side-by-side refrigerator, Wolf 48" dual fuel range with wood hood, Wolf Steam Oven, pot filler, quartz countertops, gorgeous inset cabinetry, walk-in pantry with built-ins, and Sub-Zero beverage refrigerator in the beverage center off of the breakfast area. Off of the kitchen is a library or bourbon room, featuring custom open rafter ceiling. You don't want to miss the back of this home - an expansive screened porch with NanaWall, and a stunning patio with brick fireplace, beautiful landscaping, and a covered area for grilling or seating on the breezeway to the 2 car detached garage. The luxurious first floor primary suite features a massive walk-in closet, spa-like bath with soaking tub, shower, and double sinks. The second floor offers two en-suite bedrooms with walk-in closets in addition to a large entertainment space.

Features of this Home

- Chef's Kitchen with Wolf Appliance Package
- Hardwood flooring throughout entire home
- Gorgeous detailed mouldings
- 10' high ceilings

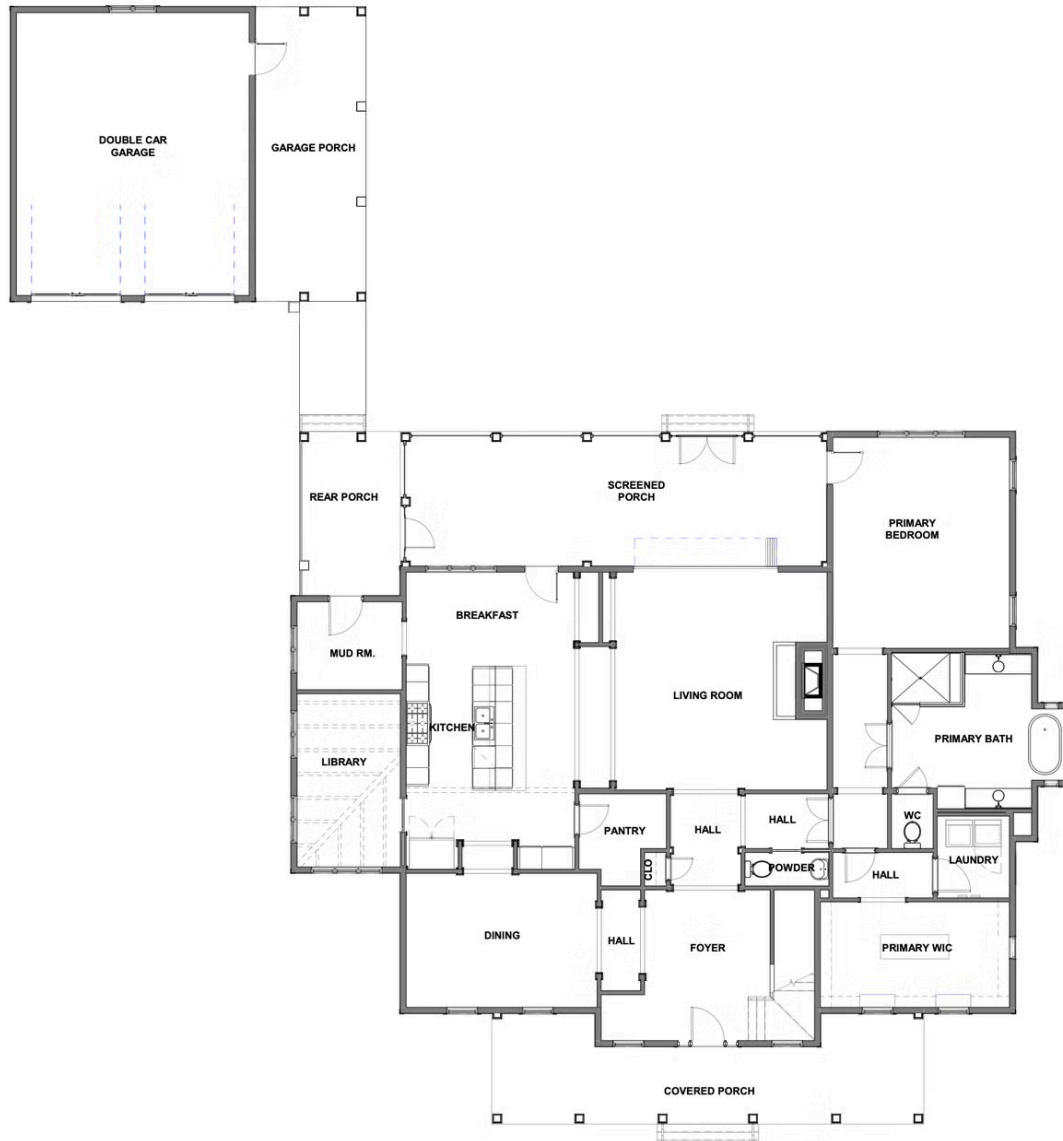
eagleofva.com

12441 Bluffton Ridge Court

AT THE BLUFFTONS



FIRST FLOOR



eagleofva.com

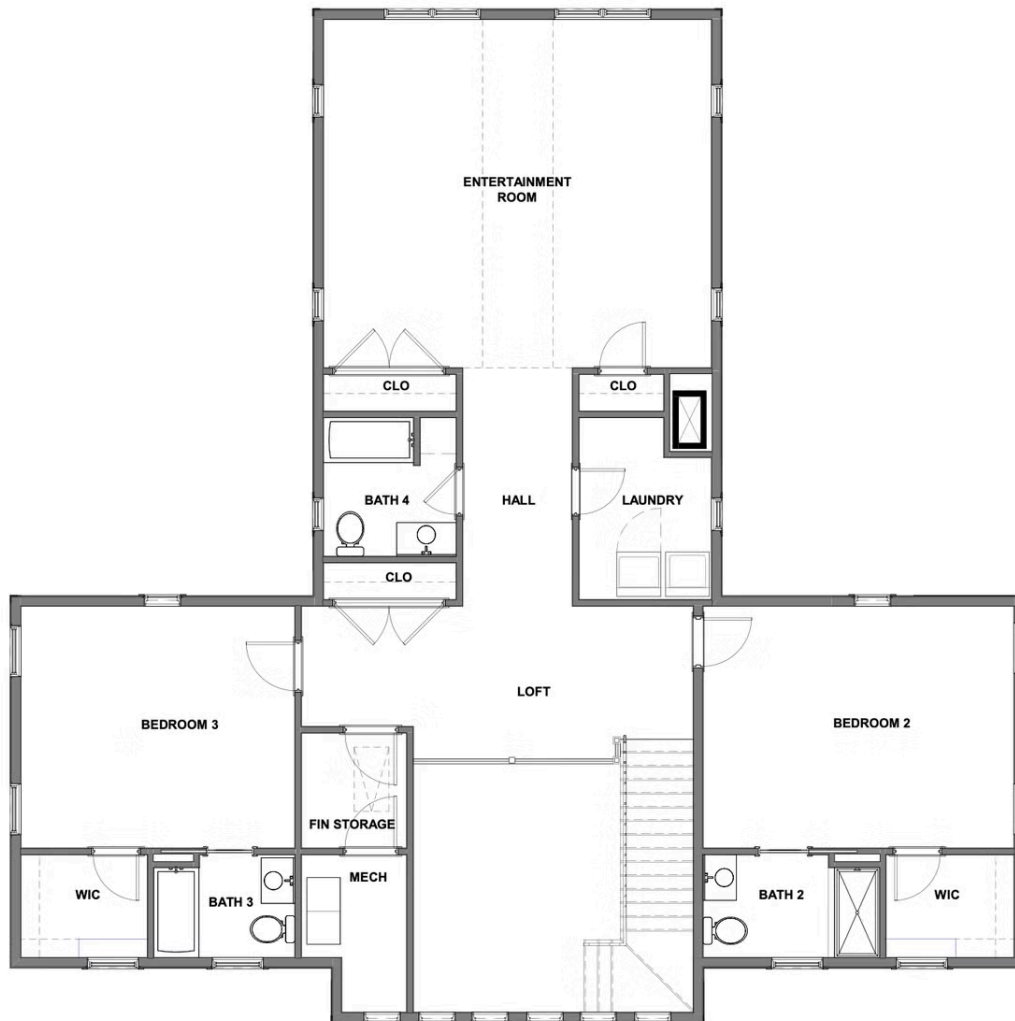
This information is deemed reliable but not guaranteed. All details, dimensions, square footage, illustrations and pricing are approximate and may vary from actual plans and specifications. Contact an Eagle Sales Consultant for details. Current information as of 3rd July 2025

12441 Bluffton Ridge Court

AT THE BLUFFTONS



SECOND FLOOR



eagleofva.com

This information is deemed reliable but not guaranteed. All details, dimensions, square footage, illustrations and pricing are approximate and may vary from actual plans and specifications. Contact an Eagle Sales Consultant for details. Current information as of 3rd July 2025