






-  3 - 4 Bedrooms
-  3.5 - 4.5 Bathrooms
-  3,100 Square Feet
-  2 Car Garage
-  4 Levels



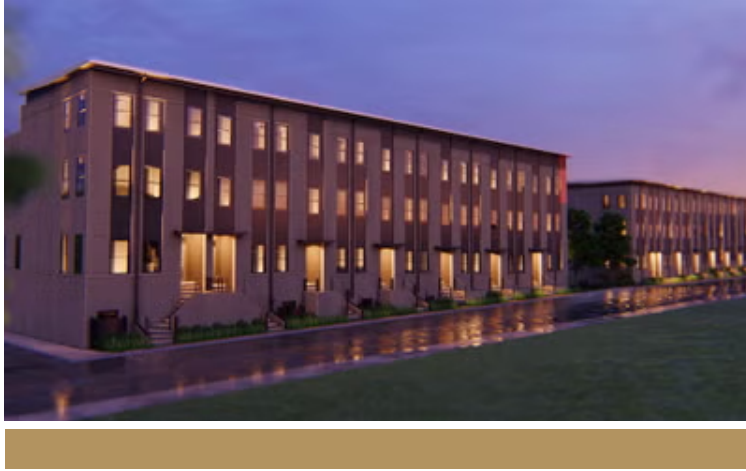
The Southaven is a 4-story second floor entry townhome with plenty of opportunity to personalize this new home floor plan to fit your lifestyle. On the first floor you will find your 2-car rear load garage, as well a bedroom and full bath. Head on up to the second floor where you will find the main entry door to your home, along with your kitchen that has a large island opening right to the spacious Family Room. A dining room completes the floor. The third floor has either dual primary bedroom suites or if you choose the three bedroom option, your entire 3rd floor will be your owners suite! Plus your laundry room is on this floor for added convenience. The fourth floor will have an additional bedroom and full bath, as well as a spacious media room that leads out to a large outdoor terrace. Enjoy beautiful views of the city and river from your terrace while sipping on your morning coffee or enjoying some evening appetizers and the sunset. All homes have a personal elevator.

Features of this Floorplan

- 4-story luxury townhome
- Rear load 2-car garage
- Bedroom and full bath on first floor
- Dual Primary bedrooms
- Terrace with option for NanaWall
- Opportunity for entire primary bedroom suite on third floor with huge bathroom and walk-in closet

THE Southaven

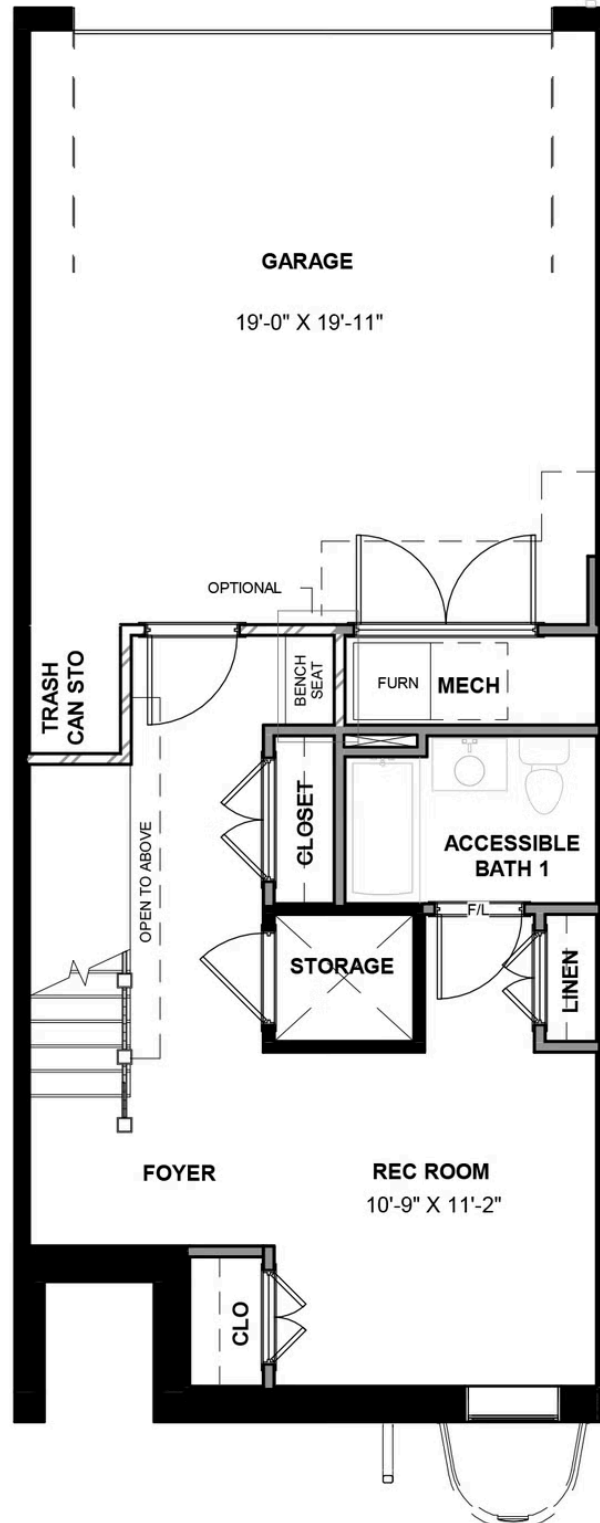
AT MCRAE & LACY



eagleofva.com

This information is deemed reliable but not guaranteed. All details, dimensions, square footage, illustrations and pricing are approximate and may vary from actual plans and specifications. Contact an Eagle Sales Consultant for details. Current information as of 18th August 2025

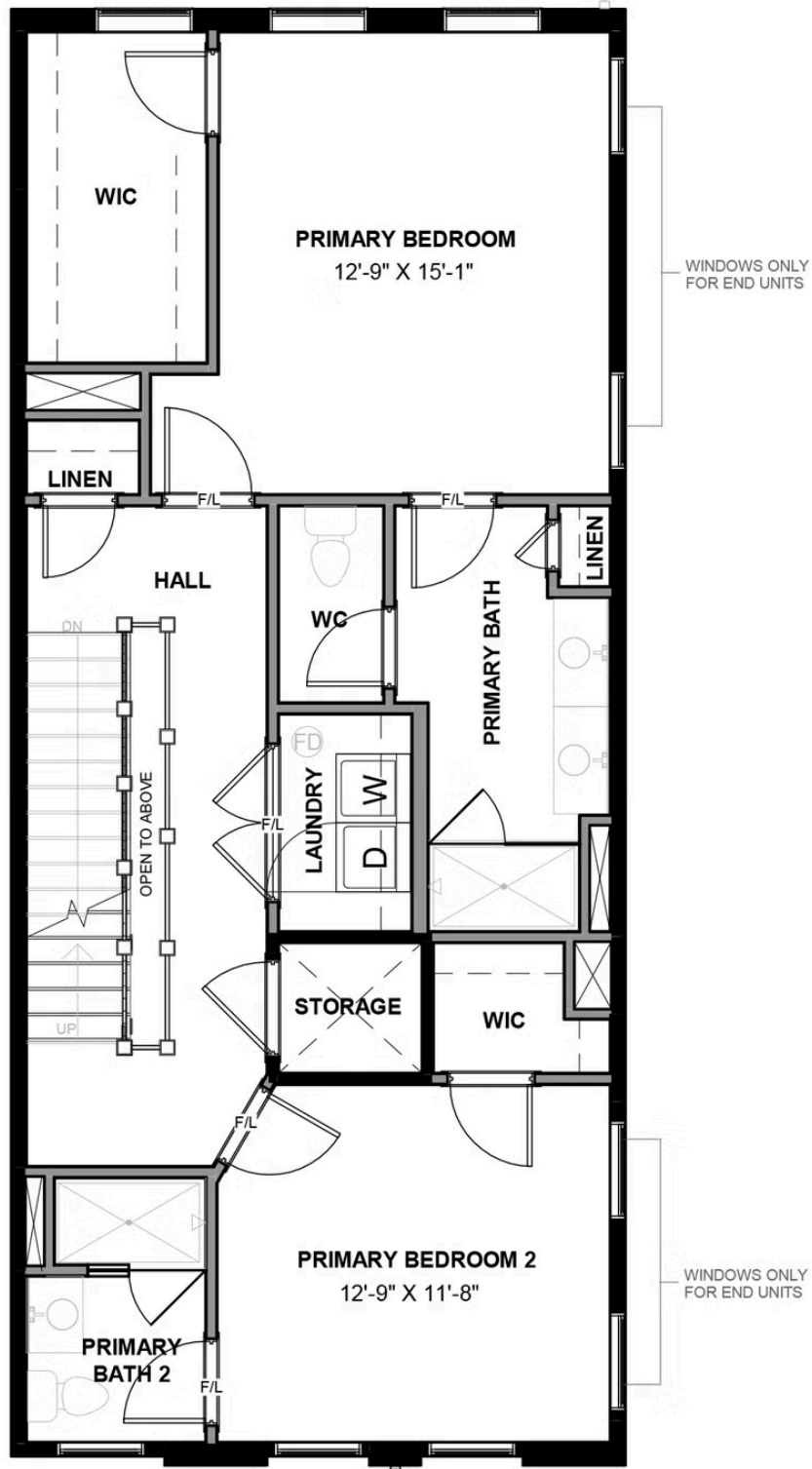
FIRST FLOOR



SECOND FLOOR



THIRD FLOOR



FOURTH FLOOR

