





417 W. 7th Street

AT MCRAE & LACY



-  3 Bedrooms
-  3.5 Bathrooms
-  3100 Square Feet
-  2 Car Garage

\$920,000



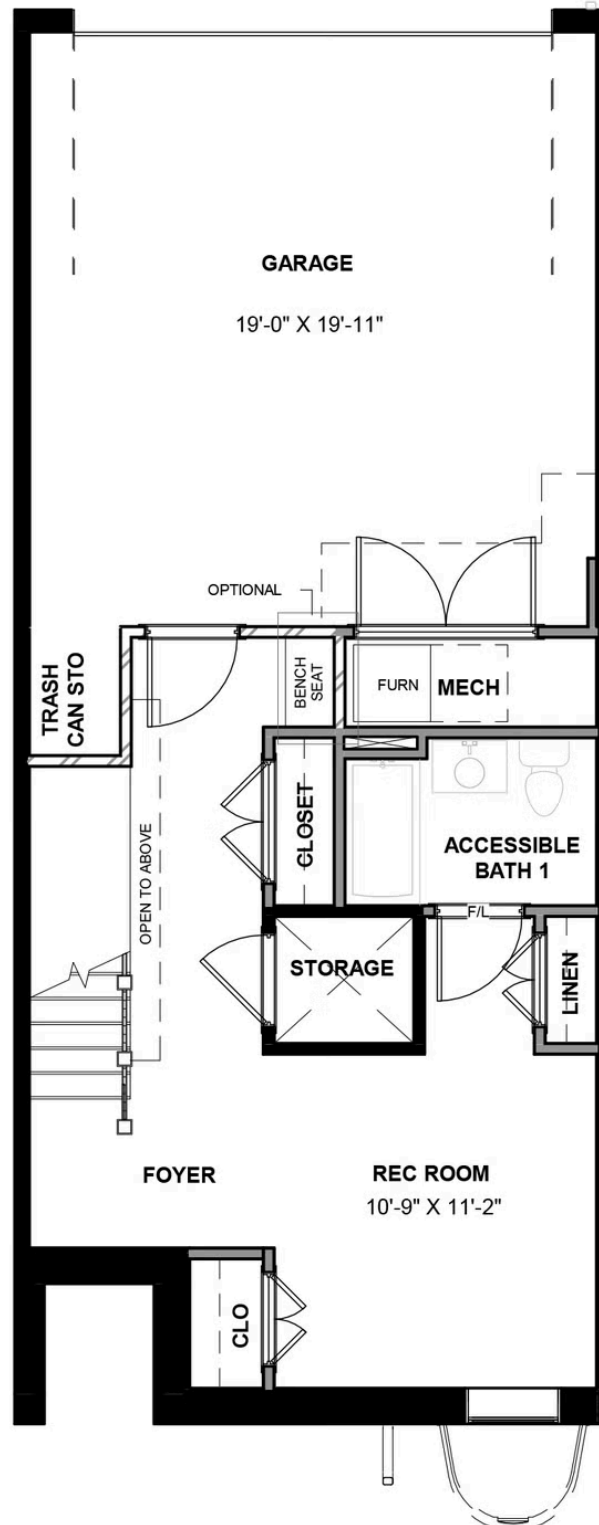
MOVE-IN READY! The Southaven is a 4-story second floor entry townhome with plenty of opportunity to personalize this new home floor plan to fit your lifestyle. On the first floor you will find your 2-car rear load garage, as well a bedroom and full bath. Head on up to the second floor where you will find the main entry door to your home, along with your kitchen that has a large island opening right to the spacious Family Room. A dining room completes the floor. Upstairs you'll find your entire 3rd floor is your owners suite with huge walk-in closet! Plus your laundry room is on this floor for added convenience. The fourth floor will have an additional bedroom and full bath, as well as a spacious media room that leads out to a large outdoor terrace. Enjoy beautiful views of the city and river from your terrace while sipping on your morning coffee or enjoying some evening appetizers and the sunset. You can add an elevator if you desire for even more convenience, otherwise enjoy the additional storage space.

Features of this Home

- Entire 3rd Floor Owner's Suite
- Hardwood Flooring Throughout
- Bright Granite Countertops with Waterfall Legs
- Fireplace
- Elevator

eagleofva.com

FIRST FLOOR



417 W. 7th Street

AT MCRAE & LACY



SECOND FLOOR



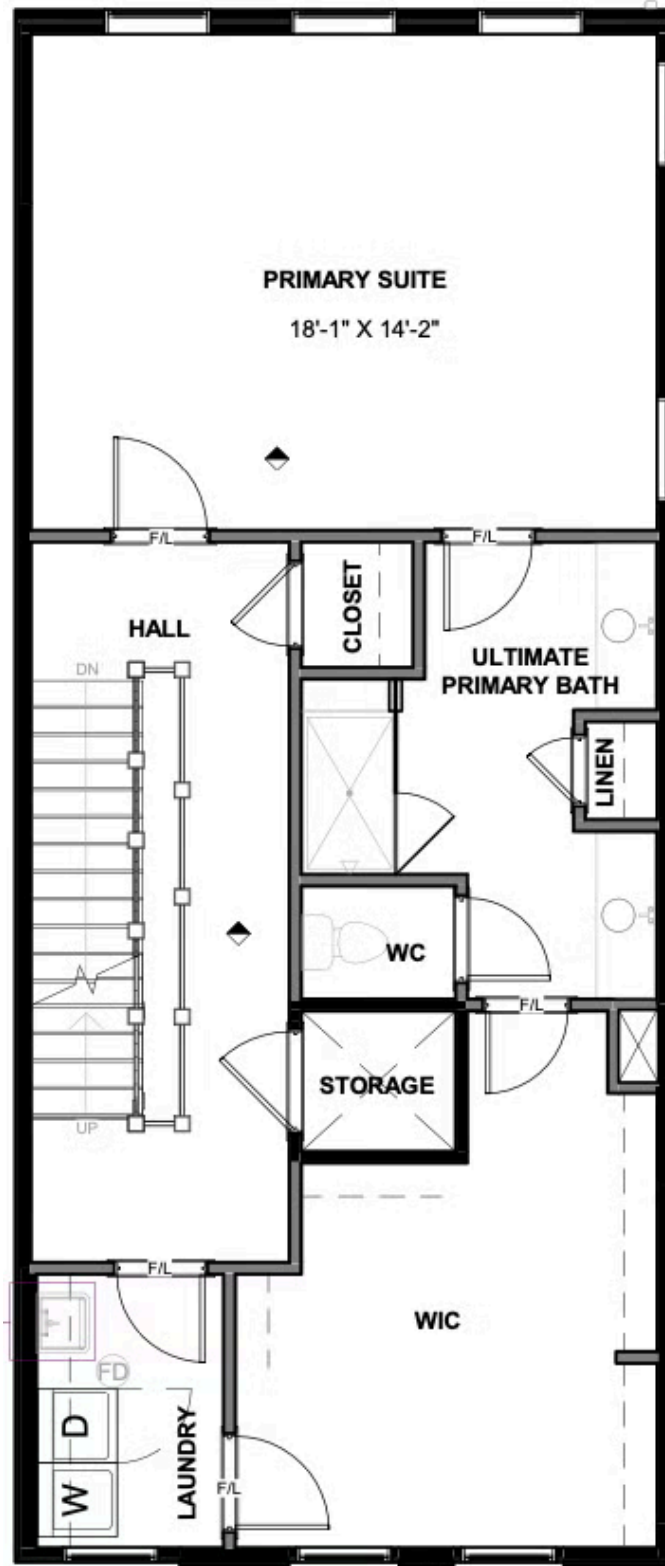
eagleofva.com

417 W. 7th Street

AT MCRAE & LACY



THIRD FLOOR



eagleofva.com