





# 412 W. 6th Street #9

AT MCRAE & LACY



-  3 Bedrooms
-  3.5 Bathrooms
-  2350 Square Feet
-  2 Car Garage

**\$795,000**



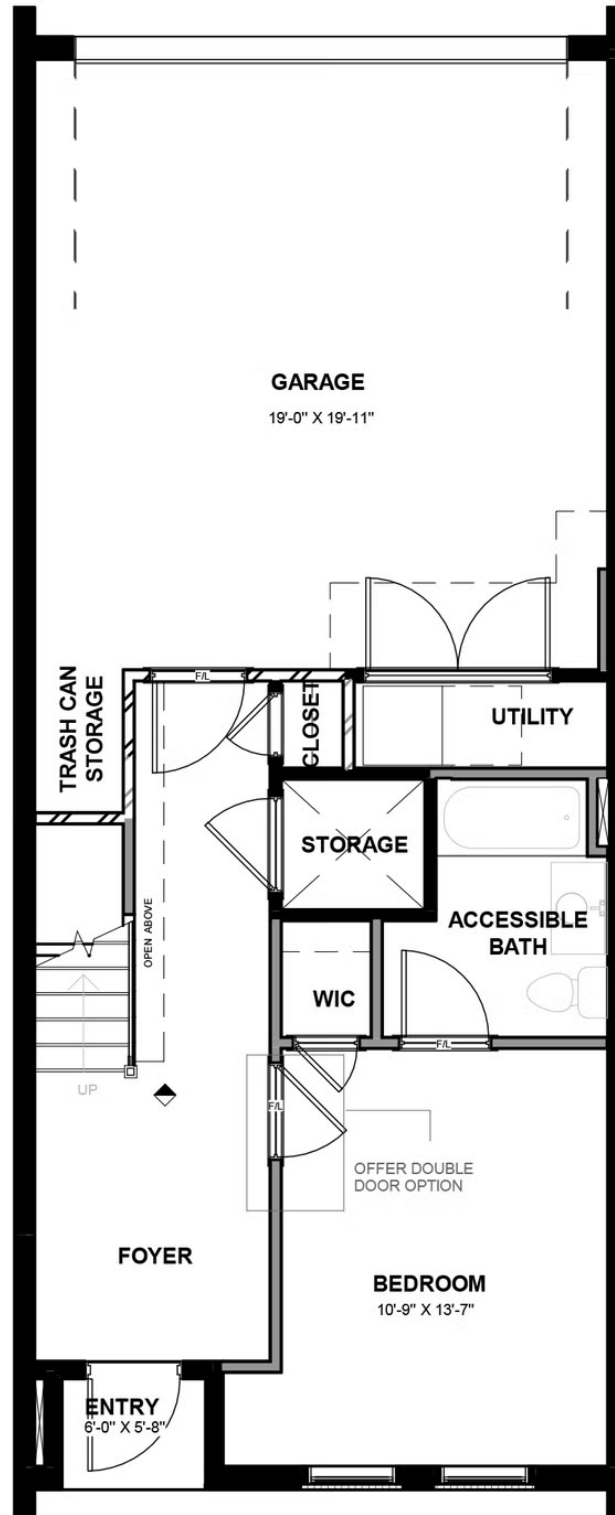
This showcase Davenport is a 3-story luxury townhome with beautiful finishes hand picked by our Design Consultants reflecting the latest styles and trends. On the first floor you will find your rear load 2-car garage, as well as a bedroom and full bath. Head on up to the second floor where you will find dual primary bedrooms with walk-in closets, as well as your Laundry Room for added convenience. The main primary bath features an expanded primary shower. Make your way to the top floor and you'll see what's really unique about this plan – your Kitchen, Dining, and Family Room are all up here, as well as your NanaWall leading out to the outdoor terrace. This is the perfect space for entertaining or enjoying a relaxing evening in! A fireplace has been added to the family room to make the space even more cozy.

## Features of this Home

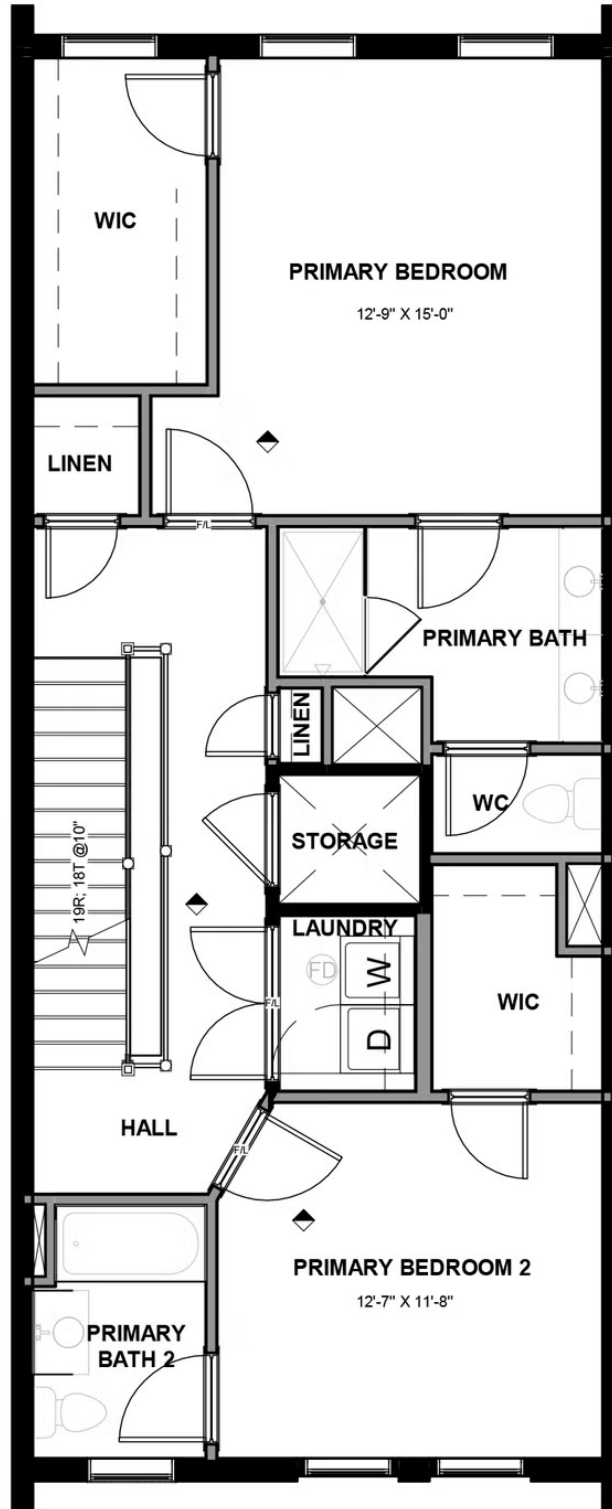
- Expanded primary shower
- NanaWall leading to outdoor terrace
- Fireplace in family room
- Quartz countertops in kitchen
- Amazing views of the James River and Richmond skyline

[eagleofva.com](http://eagleofva.com)

## FIRST FLOOR



## SECOND FLOOR



## THIRD FLOOR

