





404 W. 6th Street

AT MCRAE & LACY



-  3 Bedrooms
-  3.5 Bathrooms
-  2700 Square Feet
-  2 Car Garage

\$875,000



This showcase Laurel is a 3-story townhome with beautiful finishes hand-picked by our Design Consultants reflecting the latest styles and trends. On the first floor you will find your 2-car rear load garage that leads you to a bedroom with full bath, as well as your personal elevator that can take you to your second and third floor. Head on up to the second floor featuring your spacious primary bedroom and bathroom, as well as an additional bedroom with full bath and a sitting room. A laundry room can be found on this floor for added convenience. Head on up to the third floor and discover your Kitchen with a huge island that opens up right to the Family Room with fireplace and Dining Room. The outdoor terrace is also on the third floor...here you can kick off your day with a cup of coffee, or perhaps start your evening with appetizers and drinks, while enjoying the beautiful views of the James River and Richmond skyline!

Features of this Home

- Personal elevator
- Alternate kitchen layout
- Painted white brick fireplace in family room
- Quartz countertops in kitchen
- NanaWall leading out to terrace featuring amazing views of the James River and Richmond skyline

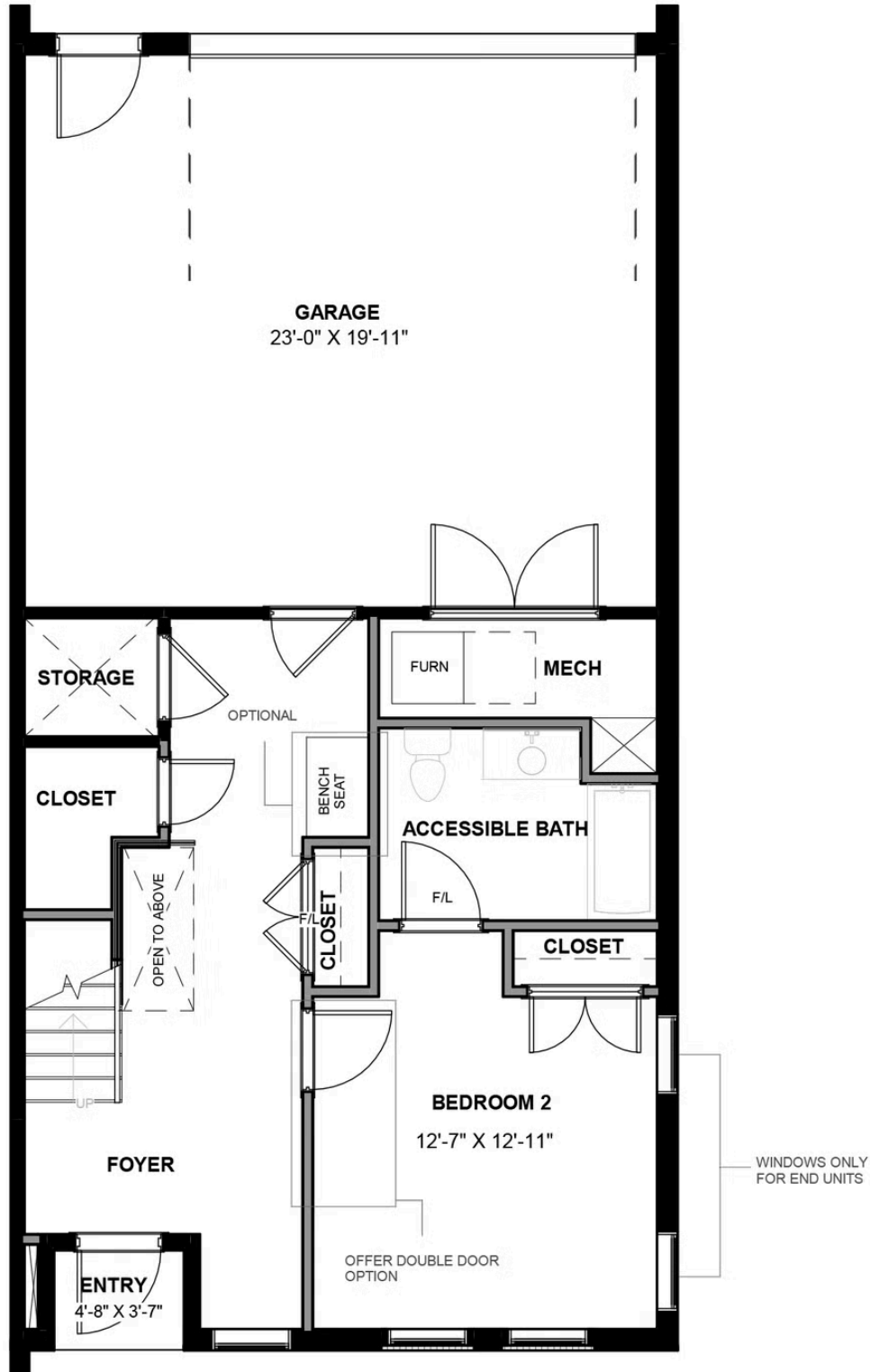
eagleofva.com

404 W. 6th Street

AT MCRAE & LACY

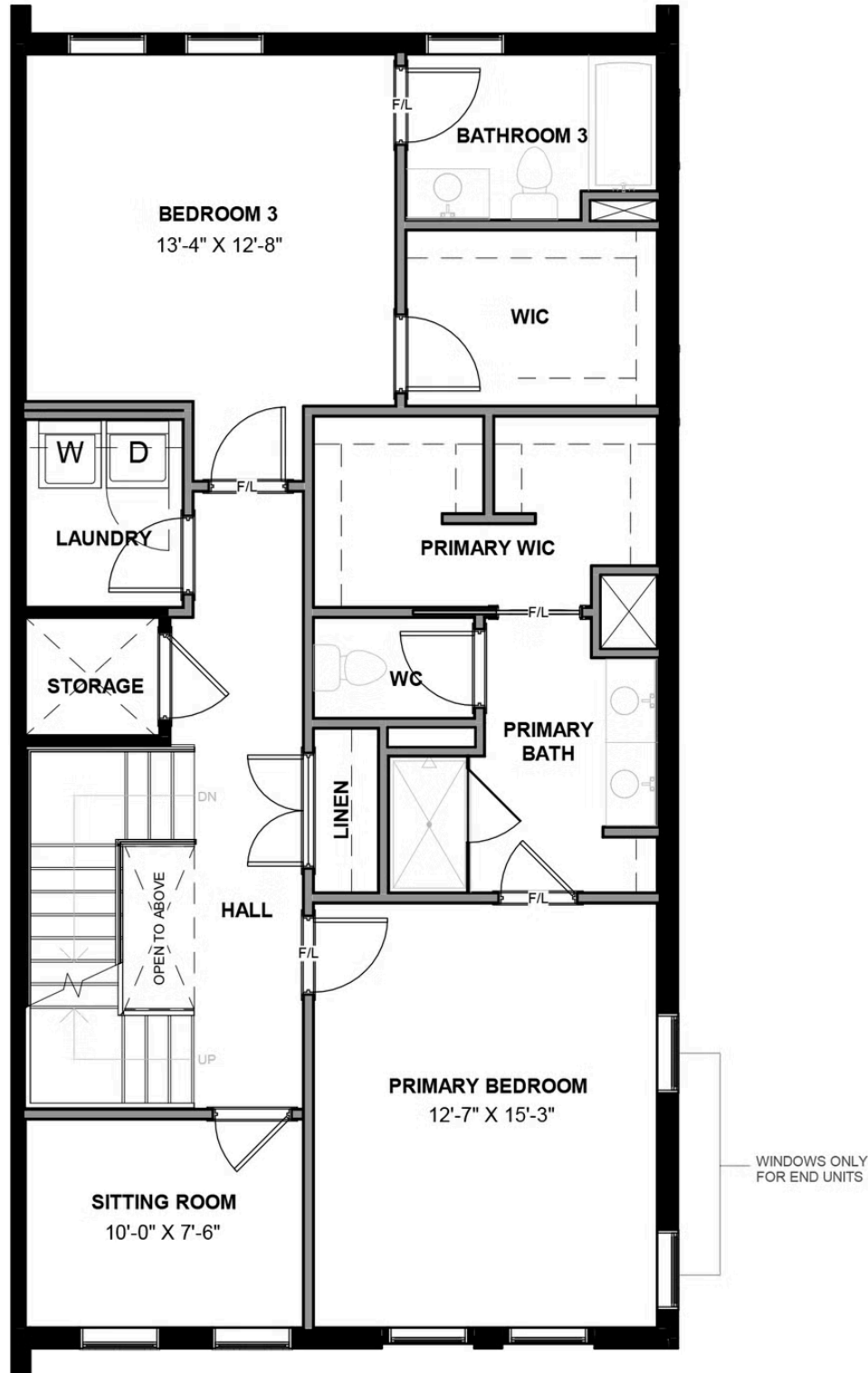


FIRST FLOOR



eagleofva.com

SECOND FLOOR

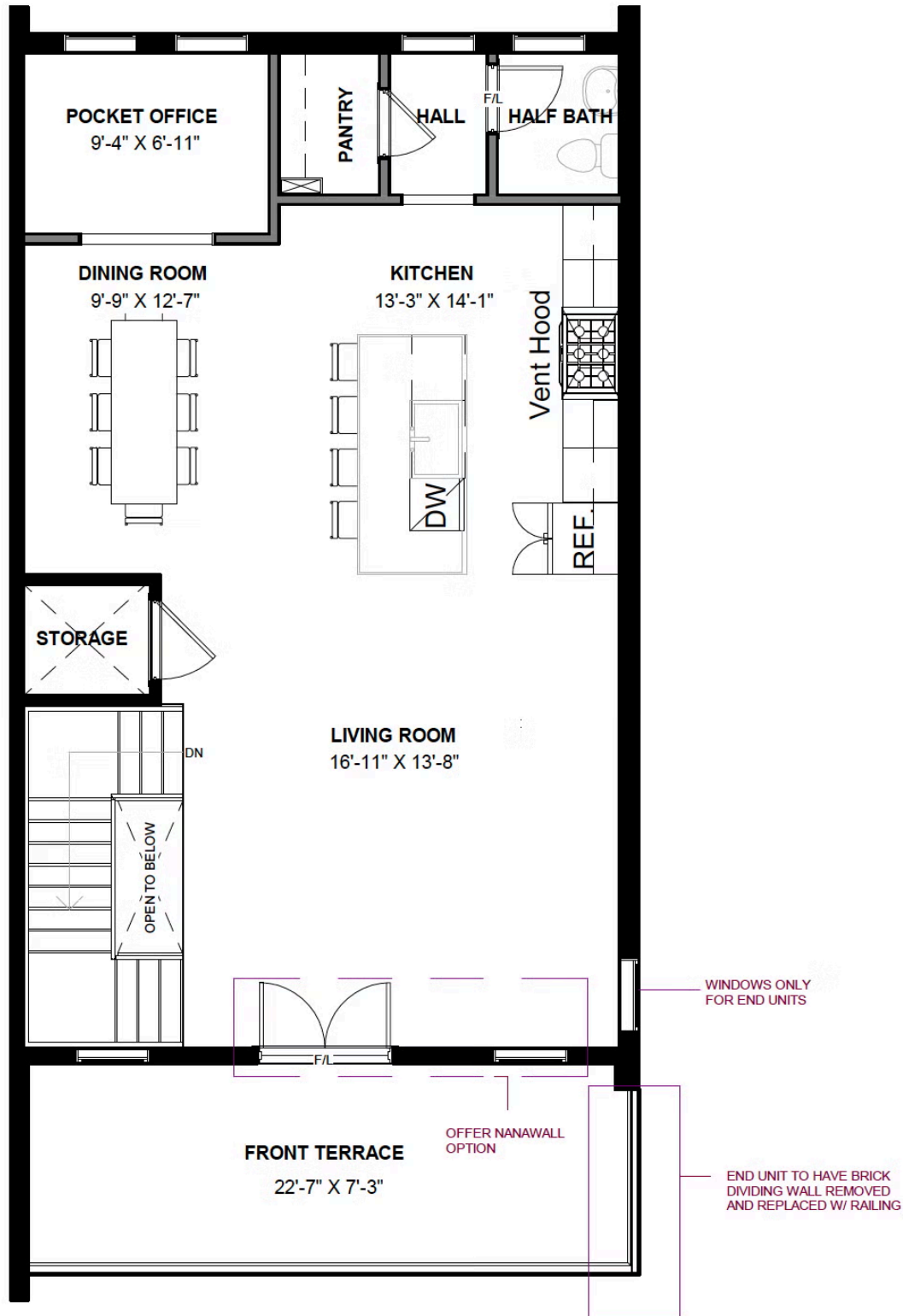


404 W. 6th Street

AT MCRAE & LACY



THIRD FLOOR



eagleofva.com