





400 W. 6th Street

AT MCRAE & LACY



-  3 Bedrooms
-  3.5 Bathrooms
-  2700 Square Feet
-  2 Car Garage

\$924,000



MOVE-IN READY! The Laurel is a 3-story townhome with plenty of opportunity to personalize this new home floor plan to fit your lifestyle. On the first floor you will find your 2-car rear load garage that leads you to a bedroom with full bath. The second floor features dual primary bedroom suites. A laundry room can be found on this floor for added convenience. Head on up to the third floor and discover your Kitchen with a huge island that opens up right to the Family Room and Dining Room. The outdoor terrace is also on the third floor...here you can get your day started with a cup of coffee, or perhaps start your evening with appetizers and drinks, while enjoying the beautiful views of the river and city!

Features of this Home

- 2nd Floor Dual Primary Bedroom Suites
- Elevator
- Fireplace
- NanaWall to Outdoor Terrace
- End Home
- Quartz Countertops in Kitchen
- Modern Finishes

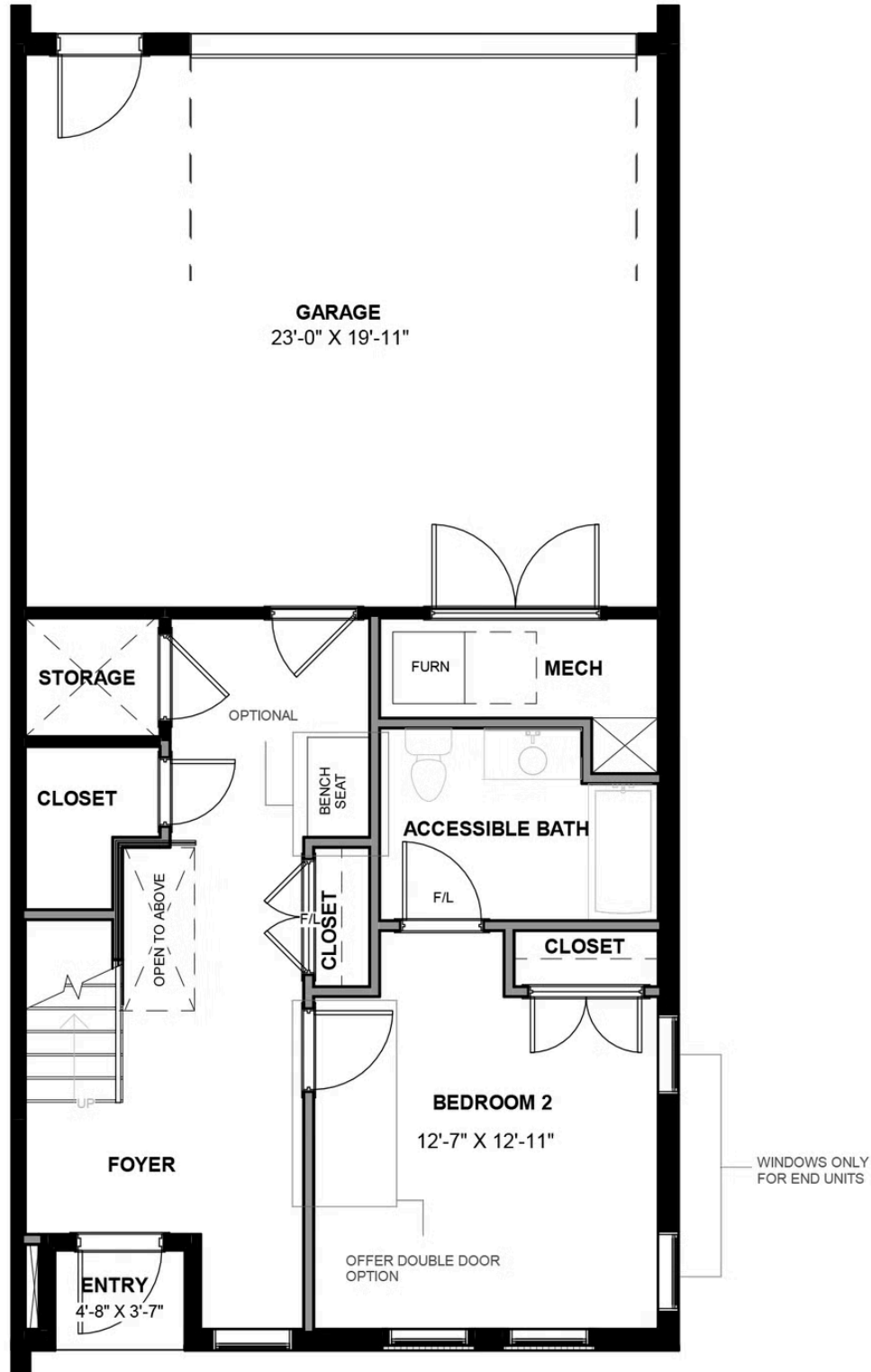
eagleofva.com

400 W. 6th Street

AT MCRAE & LACY

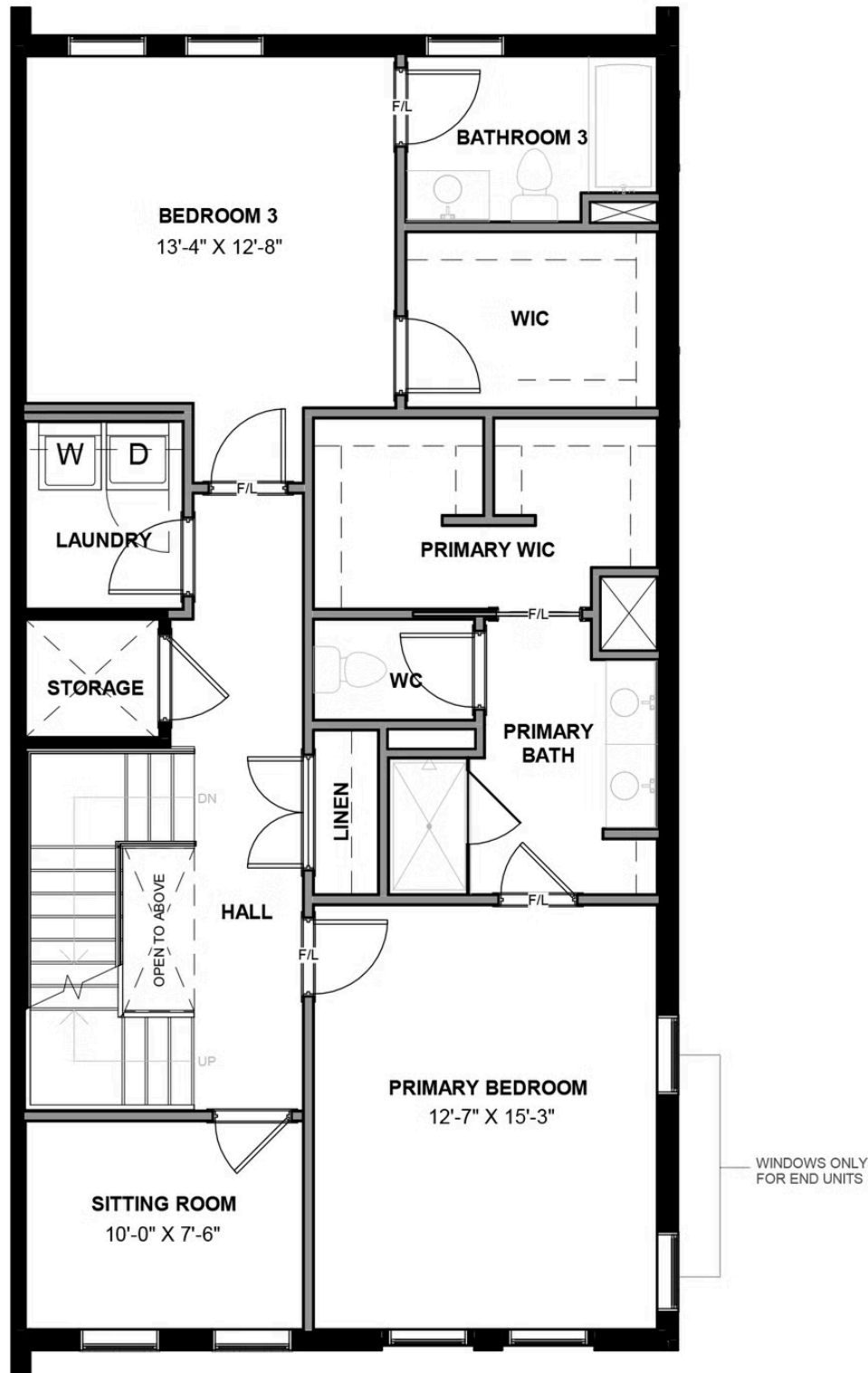


FIRST FLOOR



eagleofva.com

SECOND FLOOR

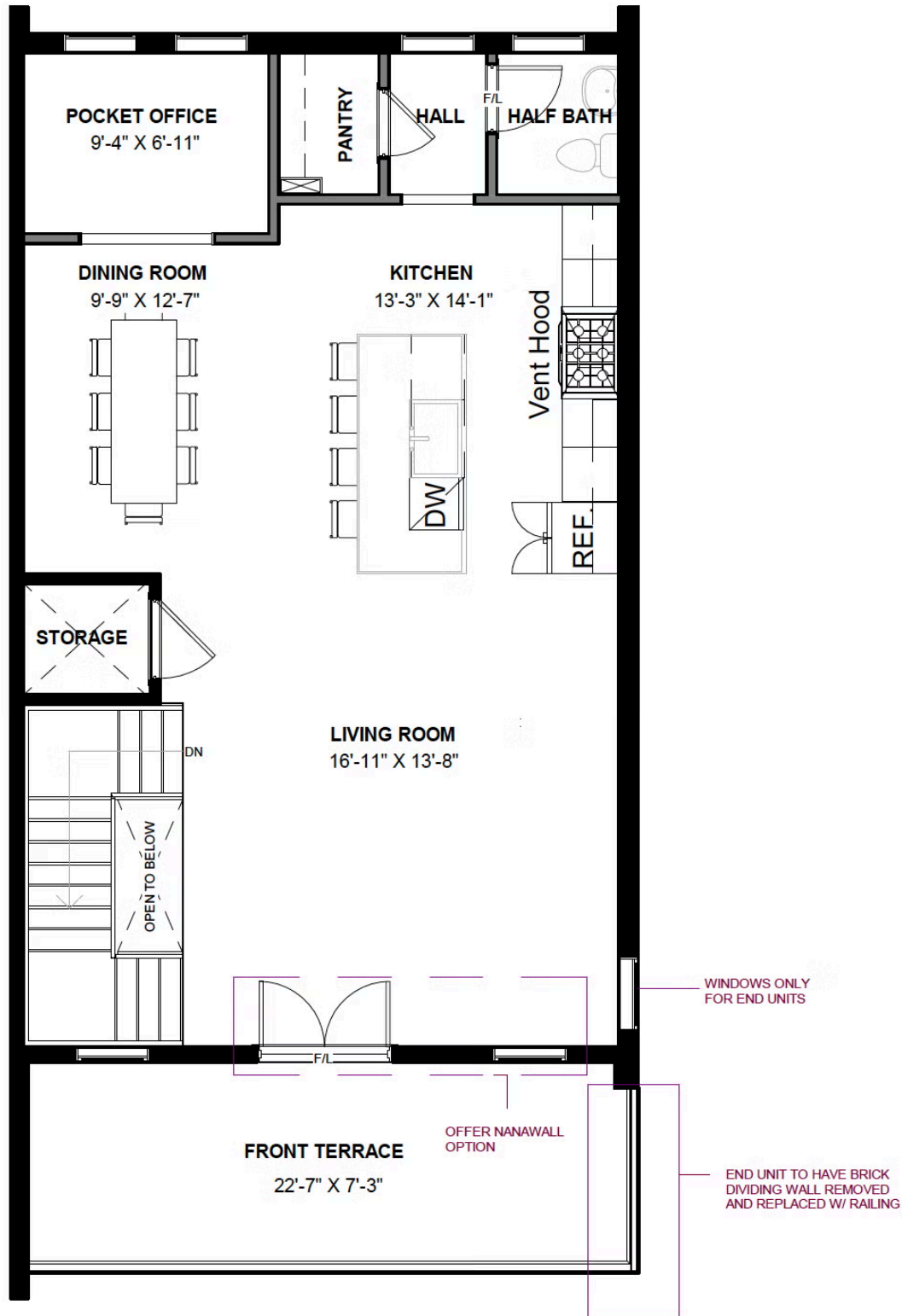


400 W. 6th Street

AT MCRAE & LACY



THIRD FLOOR



eagleofva.com