






THE Creek's Edge C

AT CREEK'S EDGE AT STONY POINT



-  3 Bedrooms
-  3.5 Bathrooms
-  2,008 Square Feet
-  2 Car Garage
-  3 Levels



Welcome to your new 3-story townhome at Creek's Edge, a low maintenance community in the heart of Huguenot right next to Stony Point Fashion Park. Your rear load 2-car garage will bring you to the basement level of your home with bonus room and full bath. Head upstairs to the main level where you'll find a flex space with French doors, perfect for a home office, quiet place to curl up with a book, or anything that recharges your batteries. The kitchen features a large corner pantry with island overlooking the family room. Head on out to your deck to start your day with a relaxing cup of coffee or to enjoy a quiet evening. The top floor of the townhome features a tucked away primary bedroom with primary bath; as well as two additional bedrooms, full bath, and laundry room.

eagleofva.com

THE Creek's Edge C

AT CREEK'S EDGE AT STONY POINT



eagleofva.com

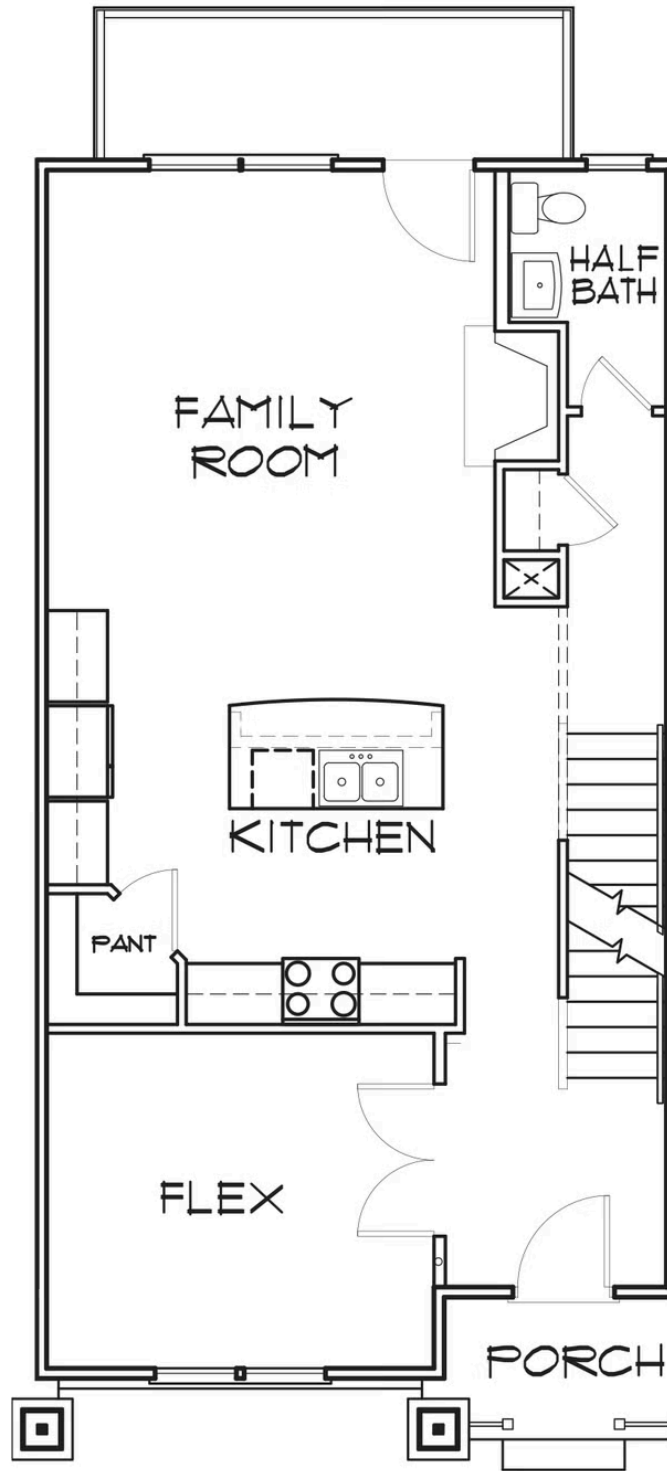
This information is deemed reliable but not guaranteed. All details, dimensions, square footage, illustrations and pricing are approximate and may vary from actual plans and specifications. Contact an Eagle Sales Consultant for details. Current information as of 3rd July 2025

THE Creek's Edge C

AT CREEK'S EDGE AT STONY POINT



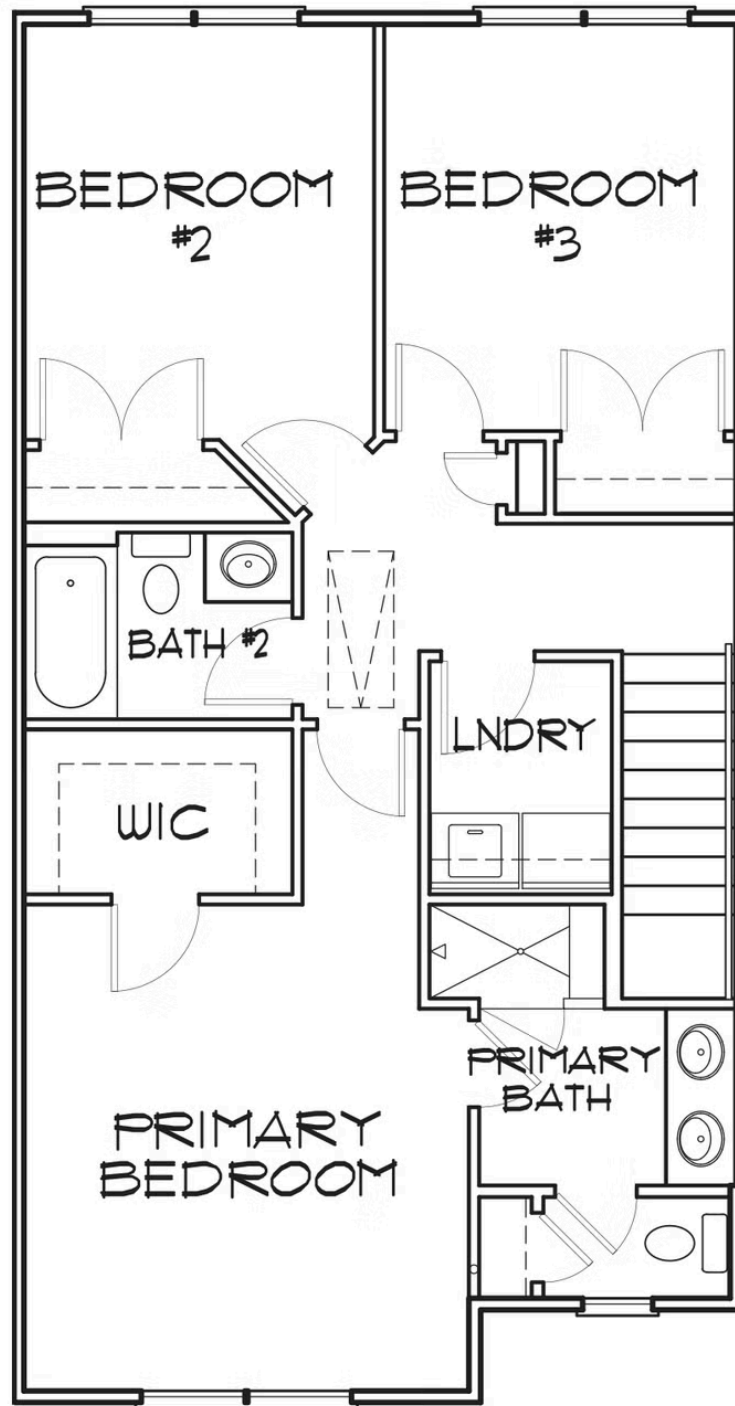
FIRST FLOOR



eagleofva.com

This information is deemed reliable but not guaranteed. All details, dimensions, square footage, illustrations and pricing are approximate and may vary from actual plans and specifications. Contact an Eagle Sales Consultant for details. Current information as of 3rd July 2025

SECOND FLOOR



BASEMENT

