




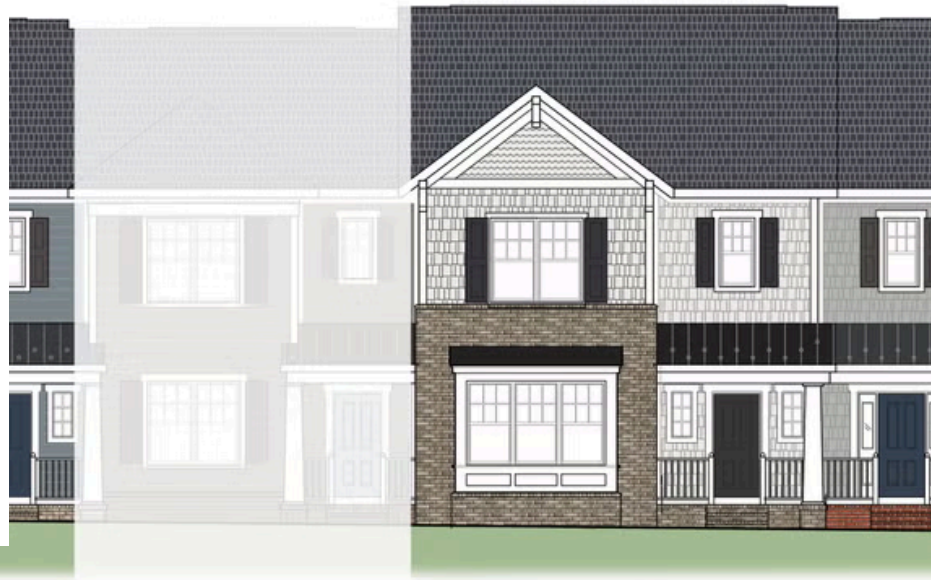


THE Creek's Edge B

AT CREEK'S EDGE AT STONY POINT



-  3 Bedrooms
-  3.5 Bathrooms
-  2,587 Square Feet
-  2 Car Garage
-  3 Levels



Welcome home to Creek's Edge, a low maintenance townhome community in the heart of Huguenot and situated right near Stony Point Fashion Park. The Creek's Edge B plan is a 3-story townhome that can either be an end or interior unit. A rear load 2-car garage on the basement level leads you into your bonus room and full bath. Head on up to the main level of the home which features a flex space, kitchen with long island and LOTS of cabinet space that overlooks the family room. Head on out to your back deck for some quiet relaxation as you sip your morning coffee or wind down from the day. On the top floor of the townhome you'll find your primary bedroom with spacious primary bath; along with 2 additional bedrooms, full bath, and laundry room for added convenience.

eagleofva.com

THE Creek's Edge B

AT CREEK'S EDGE AT STONY POINT



eagleofva.com

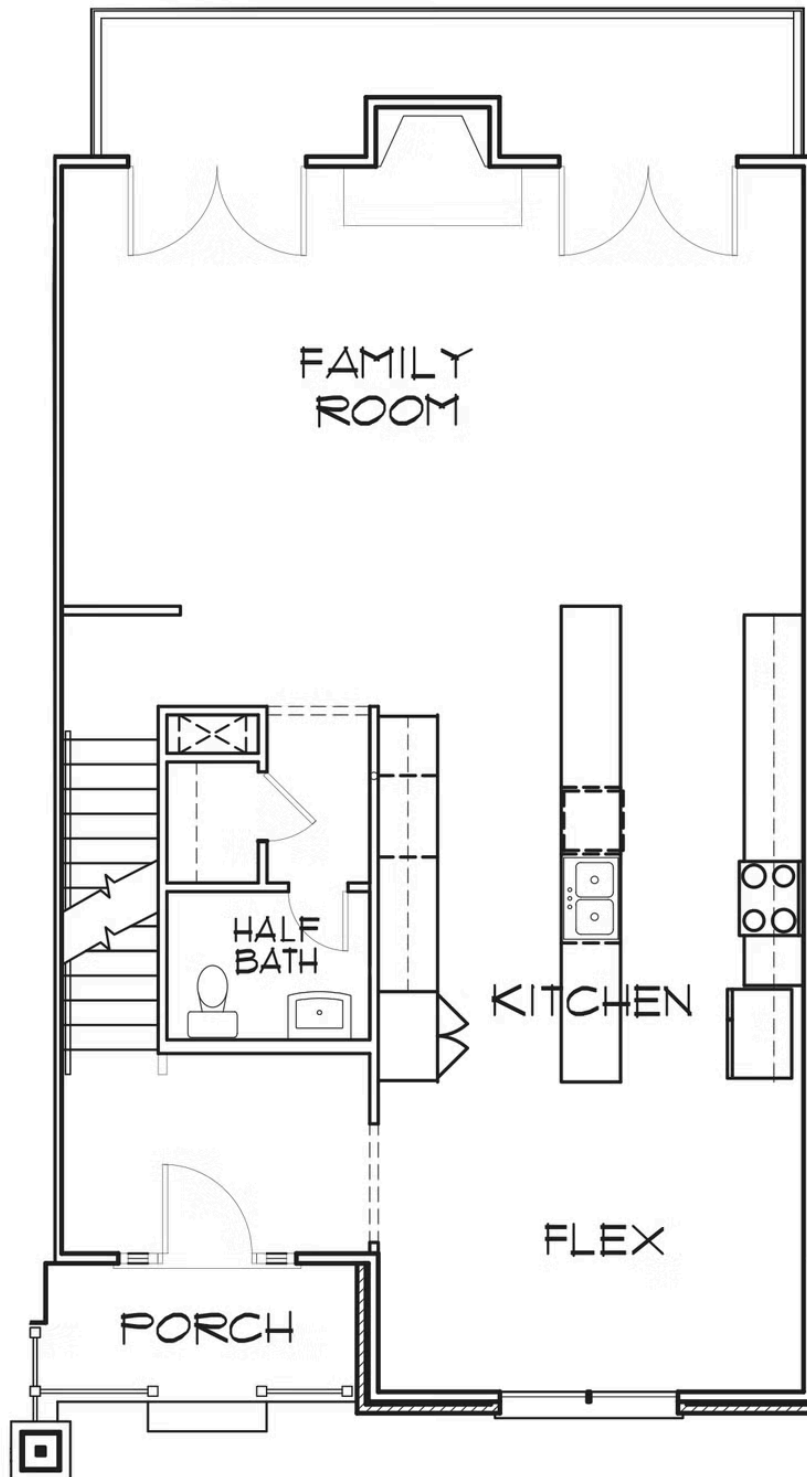
This information is deemed reliable but not guaranteed. All details, dimensions, square footage, illustrations and pricing are approximate and may vary from actual plans and specifications. Contact an Eagle Sales Consultant for details. Current information as of 18th August 2025

THE Creek's Edge B

AT CREEK'S EDGE AT STONY POINT



FIRST FLOOR



eagleofva.com

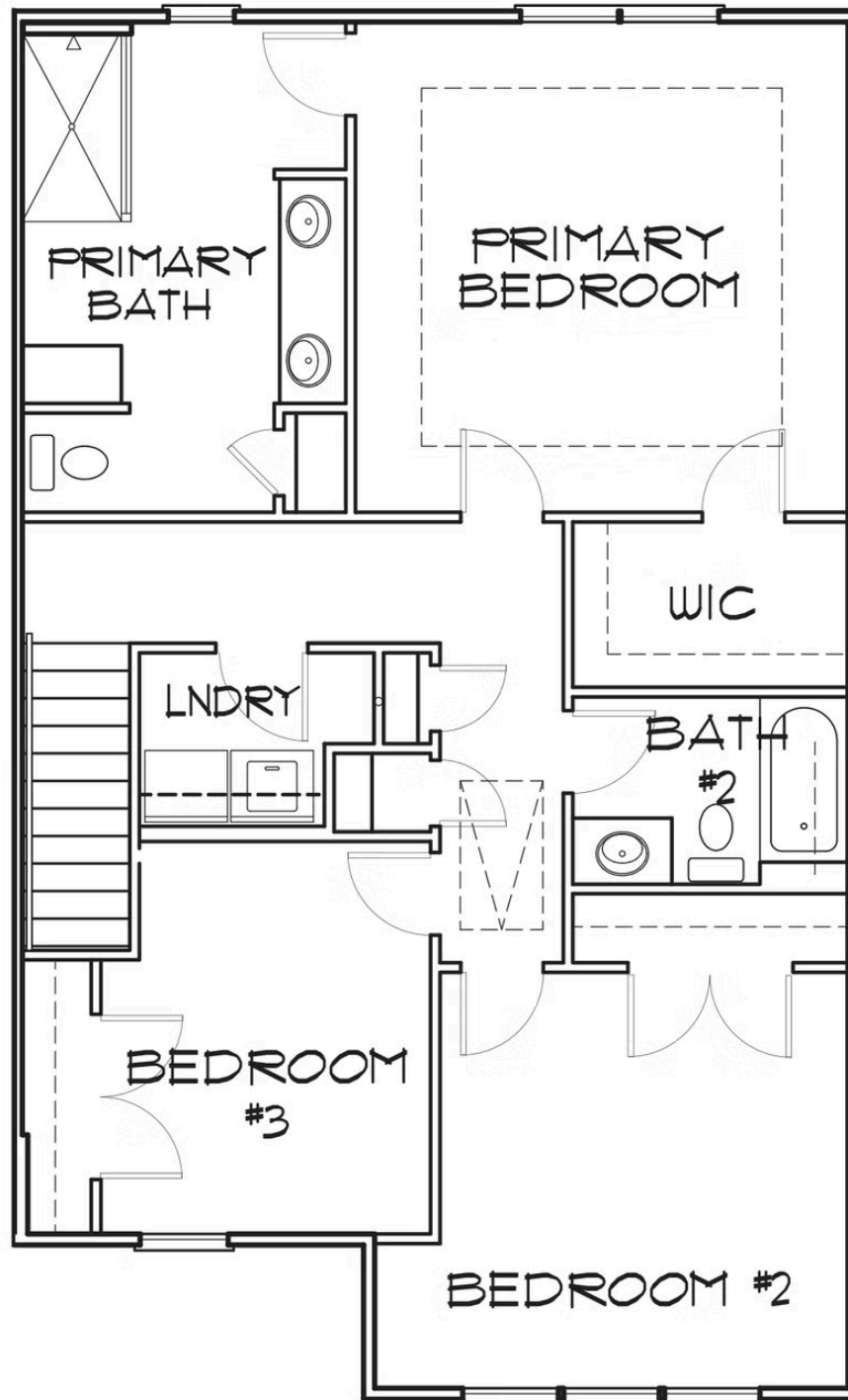
This information is deemed reliable but not guaranteed. All details, dimensions, square footage, illustrations and pricing are approximate and may vary from actual plans and specifications. Contact an Eagle Sales Consultant for details. Current information as of 18th August 2025

THE Creek's Edge B

AT CREEK'S EDGE AT STONY POINT



SECOND FLOOR



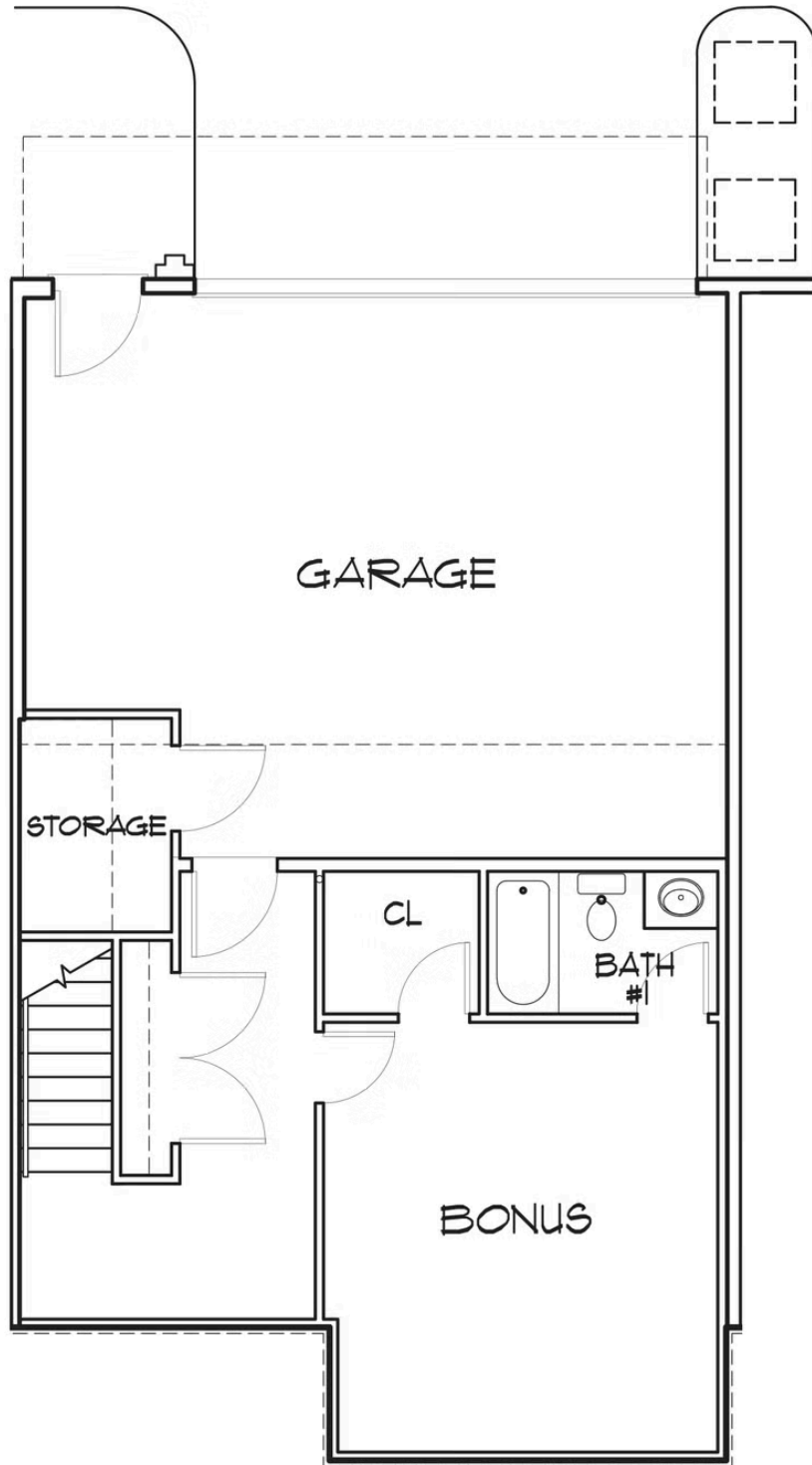
eagleofva.com

THE Creek's Edge B

AT CREEK'S EDGE AT STONY POINT



BASEMENT



eagleofva.com