





9492 Creek Summit Circle eagle

AT CREEK'S EDGE AT STONY POINT

-  3 Bedrooms
-  2.5 Bathrooms
-  2042 Square Feet
-  1 Car Garage

\$529,900



This charming two-level townhome offers a comfortable, easy flow designed for the way you live today. A welcoming front porch leads into an open main level where the kitchen, dining, and living areas connect naturally, creating a warm space for everyday routines, relaxed evenings, and casual get-togethers. Thoughtful storage, a walk-in pantry, and a rear load 1-car garage add to the home's everyday ease. The second floor is dedicated to flexibility, featuring a private primary suite, additional bedrooms ideal for guests or a home office, and a centrally located laundry area that keeps life organized. With a smart layout and low maintenance design, this home balances comfort and function beautifully.

Features of this Home

- Covered Front Porch
- Walk-in pantry
- Hardwood stairs
- Spacious primary walk-in closet

eagleofva.com

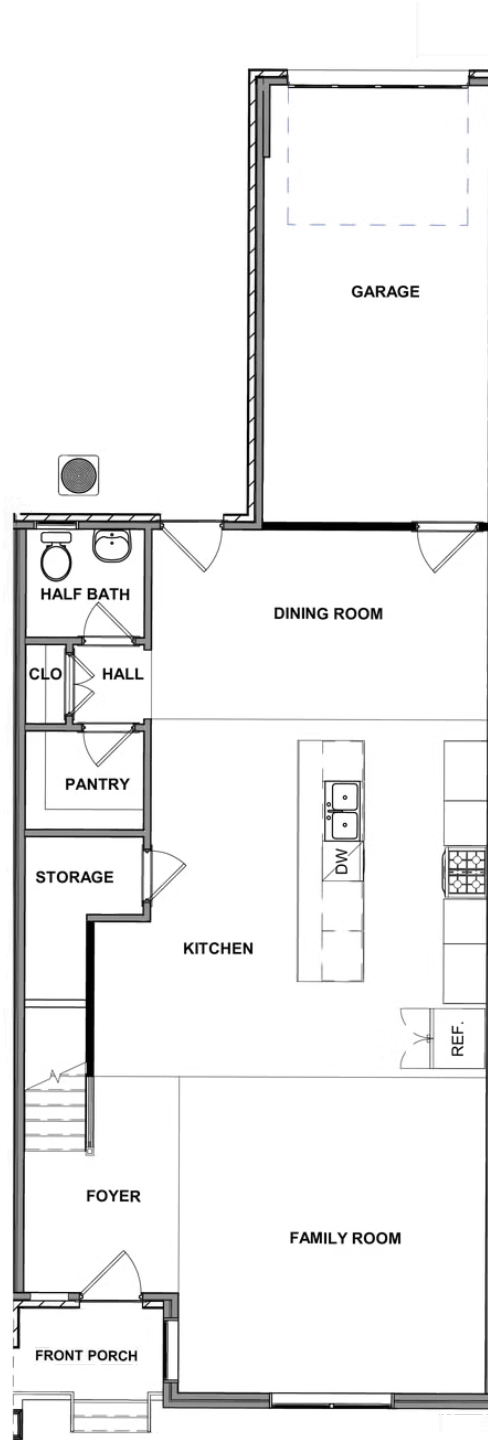
9492 Creek Summit Circle

AT CREEK'S EDGE AT STONY POINT



eagle

FIRST FLOOR



eagleofva.com

This information is deemed reliable but not guaranteed. All details, dimensions, square footage, illustrations and pricing are approximate and may vary from actual plans and specifications. Contact an Eagle Sales Consultant for details. Current information as of 26th December 2025



SECOND FLOOR

