





9486 Creek Summit Circle eagle

AT CREEK'S EDGE AT STONY POINT

-  3 Bedrooms
-  2.5 Bathrooms
-  2081 Square Feet
-  2 Car Garage

\$569,900



This welcoming two-level townhome is thoughtfully designed with everyday comfort in mind, including a first floor primary suite that makes daily living feel easy. The main level also features an open, light-filled layout where the kitchen flows naturally into the family room, creating a warm space for everyday moments and casual gatherings, while a formal dining room creates the perfect space for uninterrupted meals. A convenient mudroom/laundry room and rear load 2-car garage complete the main level. Upstairs, a bonus room and two additional bedrooms, along with a full bath, offer flexibility for guests, hobbies, or a home office. With a low maintenance design and spaces that adapt to your lifestyle, this home delivers comfort without compromise.

Features of this Home

- End home
- First Floor Primary Suite
- Mud room
- Formal dining room
- Gas fireplace in family room
- Walk-in attic storage
- Extra natural light from side windows
- Bonus room on 2nd floor for loft or office

eagleofva.com

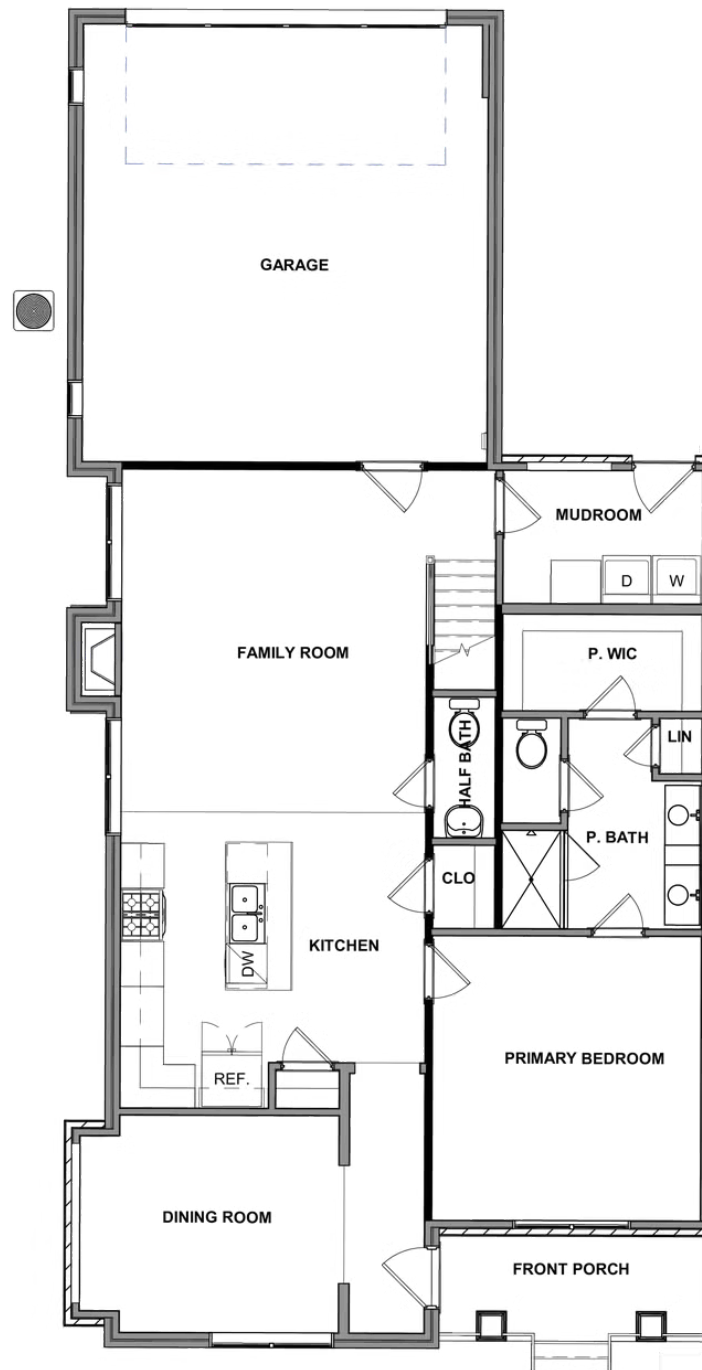
9486 Creek Summit Circle



eagle

AT CREEK'S EDGE AT STONY POINT

FIRST FLOOR



eagleofva.com

This information is deemed reliable but not guaranteed. All details, dimensions, square footage, illustrations and pricing are approximate and may vary from actual plans and specifications. Contact an Eagle Sales Consultant for details. Current information as of 26th December 2025



SECOND FLOOR

