





# 9461 Creek Summit Circle #18

AT CREEK'S EDGE AT STONY POINT



-  3 Bedrooms
-  3.5 Bathrooms
-  2008 Square Feet
-  2 Car Garage

**\$559,900**



**MOVE-IN READY!** Featuring 3 bedrooms, 3.5 baths, and 2,008 square feet, this 3-story townhome shows off its curb appeal while keeping its 2-car rear load garage neatly tucked away. The basement level features the garage, as well as a bonus room and full bath/closet to make an additional bedroom or even a study. Head on up to the main floor where you will find your spacious kitchen that flows seamlessly into the family room. Right off the family room is a rear deck perfect for sipping your morning coffee or your afternoon sweet tea. A walk-in pantry allows you additional storage, and a flex space at the front with French doors gives you that tucked away space you desire without being too far from everything. On the third floor is where you'll find your primary suite with walk-in closet and private full bath, as well as two additional bedrooms and full bath. A laundry room completes the space for added convenience.

## Features of this Home

- Gas Fireplace in Family Room
- LED Recessed Lighting Package with Dimmer Switch in Family Room and Primary Bedroom
- 42" Henning Neutral Paint Kitchen Cabinets with Trash Can Pull Out, Crown Molding, Refrigerator Enclosure and more
- Ceramic Tile Backsplash in Kitchen
- Quartz Countertops in Kitchen and Full Baths
- Mohawk Laminate RevWood Select Seaside Reserve Sail Cloth Flooring in Main Living Areas
- Ceramic Tile Flooring in All Baths
- GE Stainless Steel Appliance Package including Gas Range

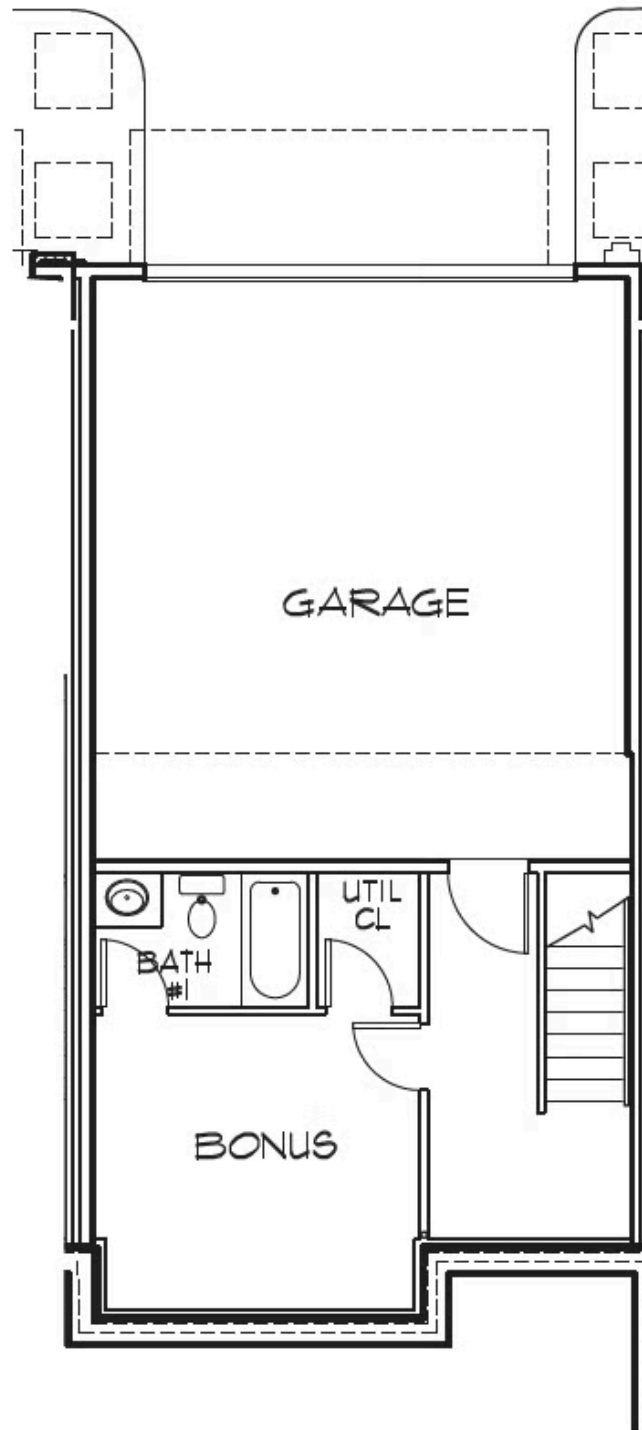
[eagleofva.com](http://eagleofva.com)

# 9461 Creek Summit Circle #18

AT CREEK'S EDGE AT STONY POINT



## BASEMENT



[eagleofva.com](http://eagleofva.com)

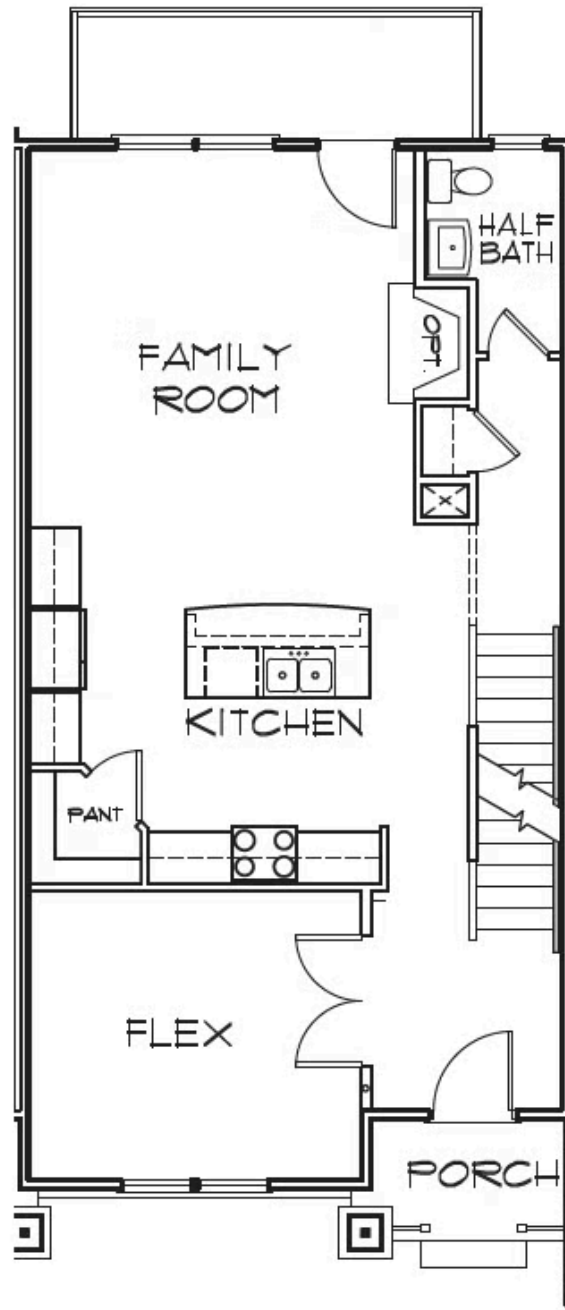
This information is deemed reliable but not guaranteed. All details, dimensions, square footage, illustrations and pricing are approximate and may vary from actual plans and specifications. Contact an Eagle Sales Consultant for details. Current information as of 25th April 2025

# 9461 Creek Summit Circle #18

AT CREEK'S EDGE AT STONY POINT



## FIRST FLOOR



[eagleofva.com](http://eagleofva.com)

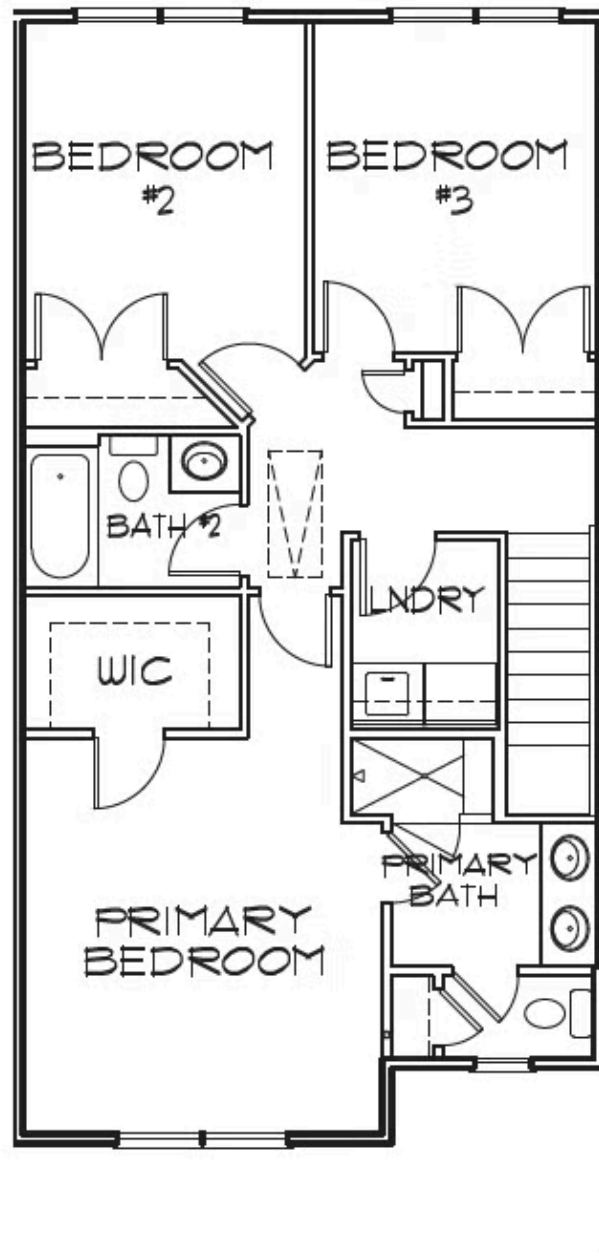
This information is deemed reliable but not guaranteed. All details, dimensions, square footage, illustrations and pricing are approximate and may vary from actual plans and specifications. Contact an Eagle Sales Consultant for details. Current information as of 25th April 2025

# 9461 Creek Summit Circle #18

AT CREEK'S EDGE AT STONY POINT



## SECOND FLOOR



[eagleofva.com](http://eagleofva.com)