





9459 Creek Summit Circle #17

AT CREEK'S EDGE AT STONY POINT



-  3 Bedrooms
-  3.5 Bathrooms
-  2587 Square Feet
-  2 Car Garage

\$614,900



This spacious 3-story townhome gives you room to spread out and the chance to still personalize your home to match your lifestyle! Featuring 3 bedrooms, 3.5 baths, and over 2,500 square feet, you'll feel right at home at Creek's Edge. The rear load 2-car garage features a pedestrian door and leads you into the basement level with bonus room and full bath/closet. You can make this space an additional guest bedroom, workout room, office...the possibilities are endless. Make your way to the main level where you will find a Kitchen with expansive island, tons of cabinet space, and a view right into the family room. Off the family room are two sets of double doors leading you to your rear deck, and a flex space at the front with bay window completes the floor. On the third floor you'll find your primary bedroom with walk-in closet and large primary bath, as well as two additional bedrooms and full bath. A laundry room completes the space for added convenience.

Features of this Home

- Fireplace in Family Room
- 42" Henning Neutral Paint Kitchen Cabinets with Henning Rich Paint Island, plus Double Trash Pull Out, Crown Molding, Refrigerator Enclosure and more
- Luxury Quartz Countertops in Kitchen
- Ceramic Tile Backplash in Kitchen
- Mohawk Pergo Neilate Cocoa Mocha Hickory Flooring in Main Living Areas
- Ceramic Tile Flooring in All Bathrooms
- GE Stainless Steel Appliance Package including Gas Range

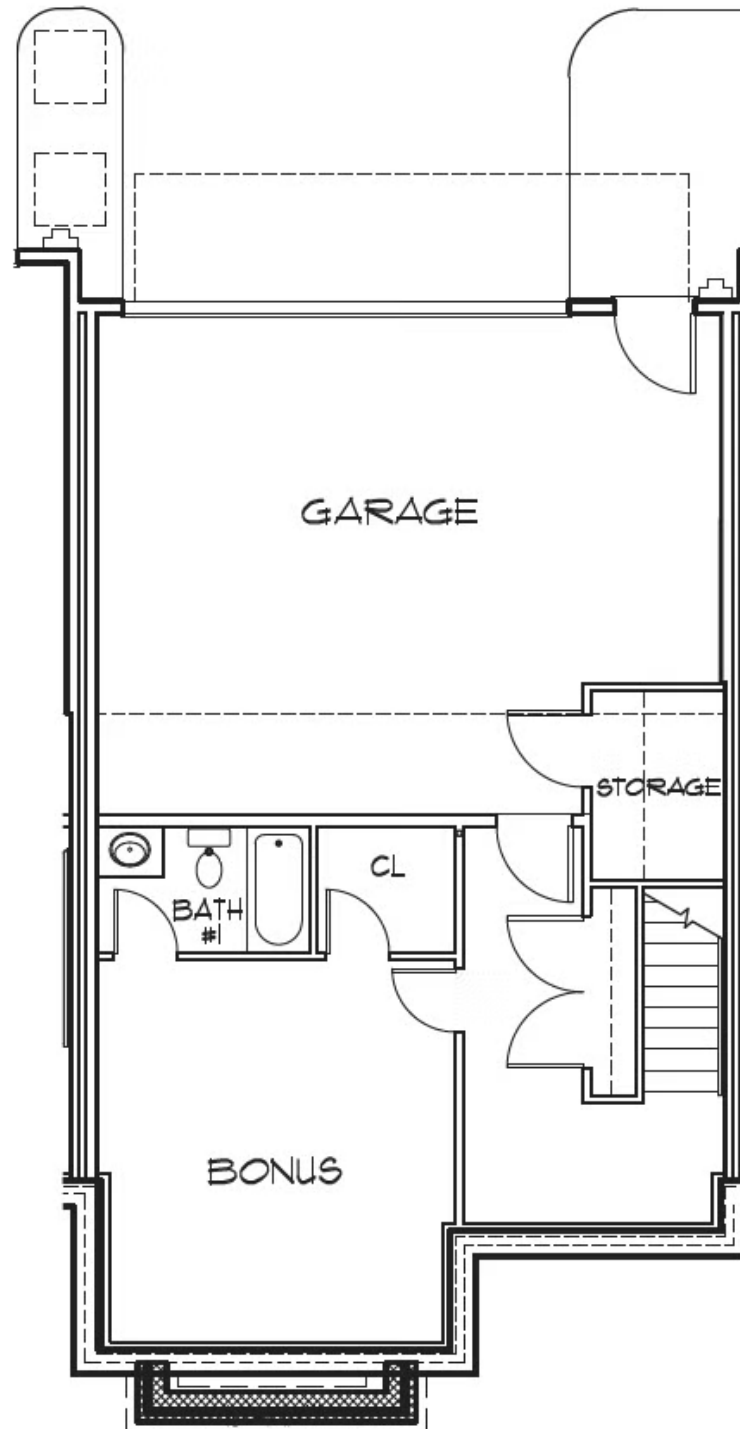
eagleofva.com

9459 Creek Summit Circle #17



AT CREEK'S EDGE AT STONY POINT

BASEMENT



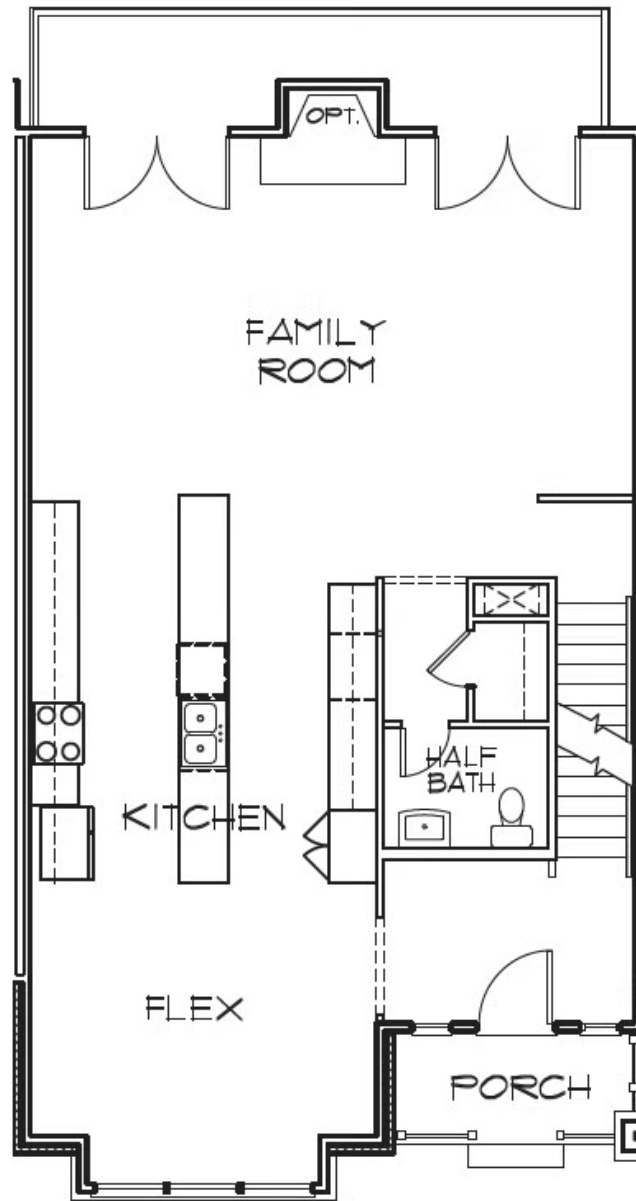
eagleofva.com

9459 Creek Summit Circle #17



AT CREEK'S EDGE AT STONY POINT

FIRST FLOOR



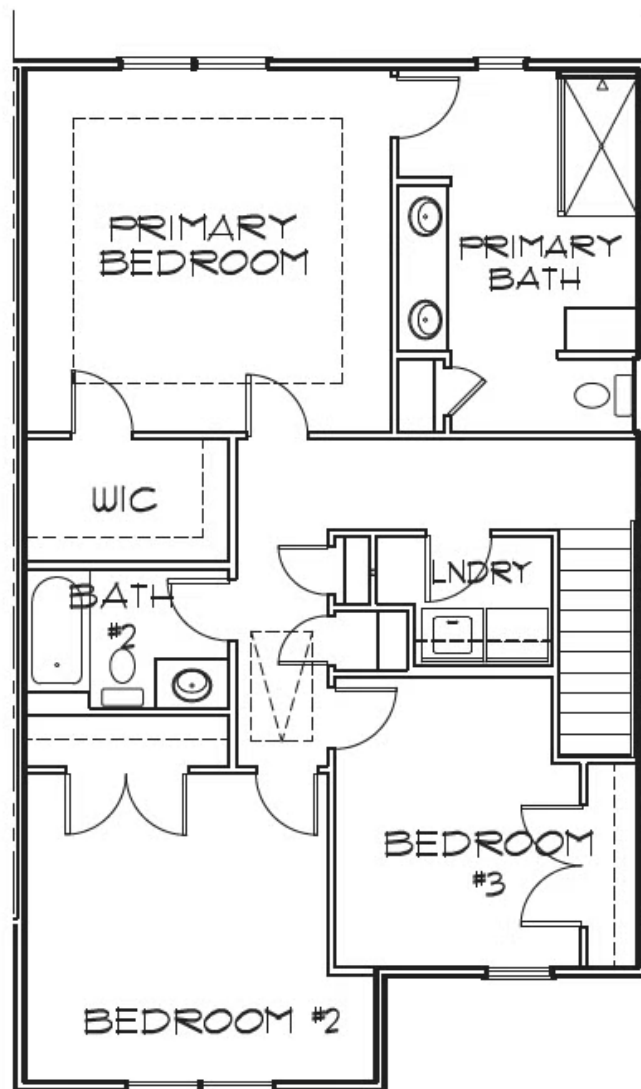
eagleofva.com

9459 Creek Summit Circle #17



AT CREEK'S EDGE AT STONY POINT

SECOND FLOOR



eagleofva.com