





9457 Creek Summit Circle eagle

AT CREEK'S EDGE AT STONY POINT

-  3 Bedrooms
-  3.5 Bathrooms
-  2587 Square Feet
-  2 Car Garage

\$599,900



MOVE-IN READY! Welcome home to Creek's Edge, a low maintenance townhome community in the heart of Huguenot and situated right near Stony Point Fashion Park. The Creek's Edge B plan is a 3-story townhome that features a rear load 2-car garage on the basement level leads you into your bonus room and full bath. Head on up to the main level of the home which features a flex space, kitchen with long island and LOTS of cabinet space that overlooks the family room. Head on out to your back deck for some quiet relaxation as you sip your morning coffee or wind down from the day. On the top floor of the townhome you'll find your primary bedroom with spacious primary bath; along with 2 additional bedrooms, full bath, and laundry room for added convenience.

Features of this Home

- Gas Fireplace in Family Room
- 42" Yorktowne Henning Neutral Paint Kitchen Cabinets with Crown Molding, Double Trash Pull Out, Refrigerator Enclosure, and more
- Floating Shelves, Ceramic Tile Backsplash, and Granite and Quartz Countertops in Kitchen
- Stainless Steel Appliance Package including Gas Range, Chimney Hood, Drawer Microwave, and Dishwasher
- Mohawk Laminate RevWood Select Seaside Reserve Bleached Linen Flooring throughout Main Living Areas
- Ceramic Tile Flooring in Laundry Room and All Bathrooms
- LED Recessed Lighting Package in Family Room

eagleofva.com

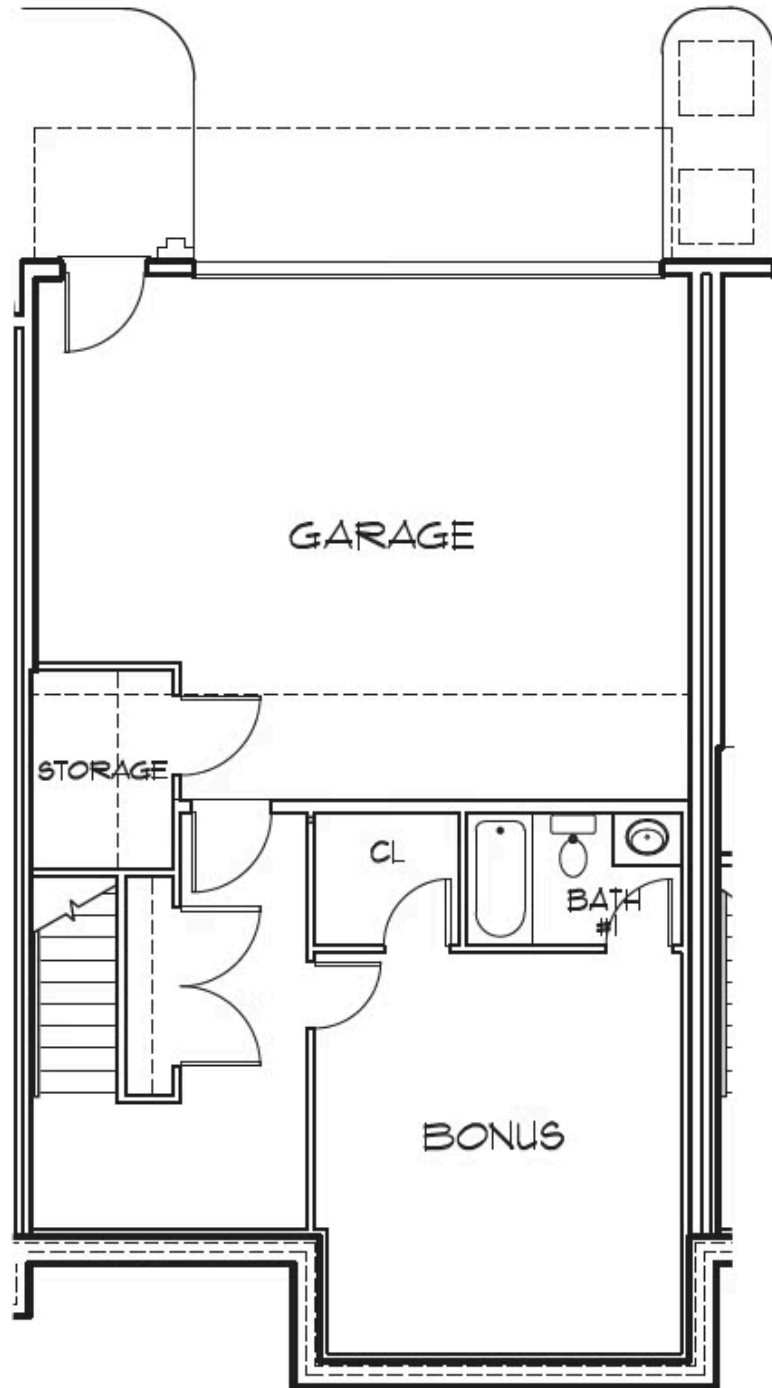
9457 Creek Summit Circle

AT CREEK'S EDGE AT STONY POINT



eagle

BASEMENT



eagleofva.com

This information is deemed reliable but not guaranteed. All details, dimensions, square footage, illustrations and pricing are approximate and may vary from actual plans and specifications. Contact an Eagle Sales Consultant for details. Current information as of 11th July 2025

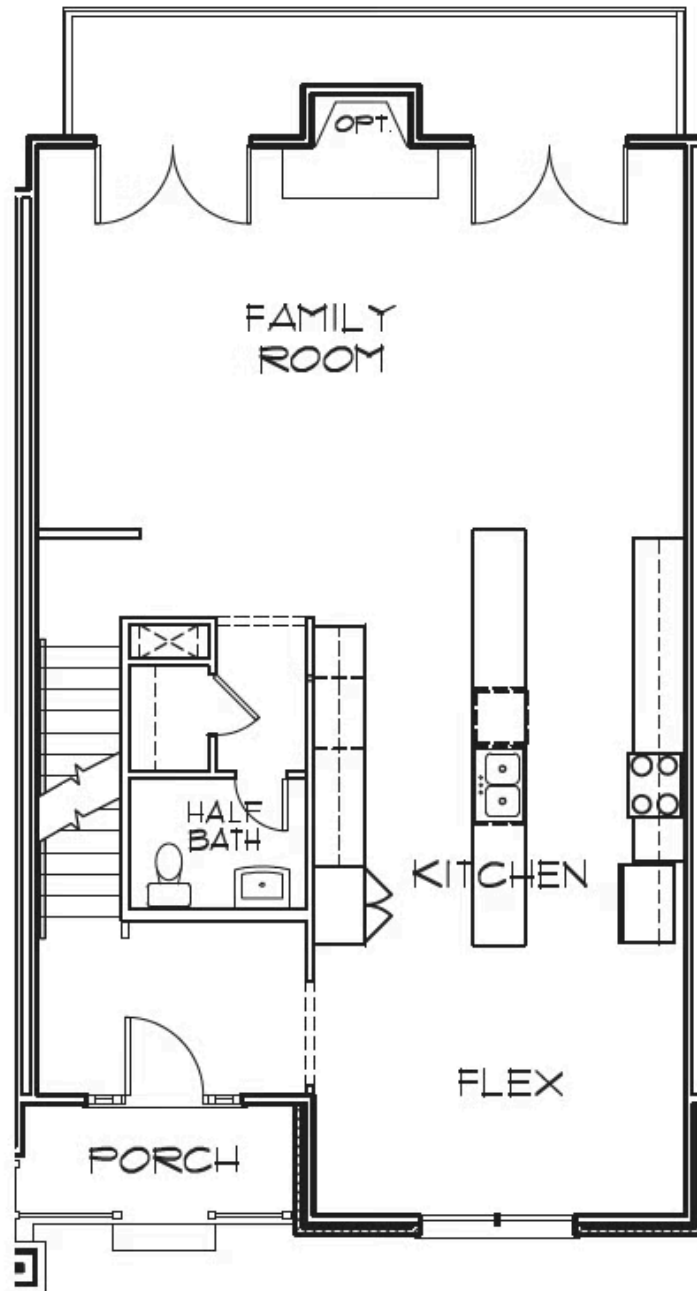
9457 Creek Summit Circle



eagle

AT CREEK'S EDGE AT STONY POINT

FIRST FLOOR



eagleofva.com

This information is deemed reliable but not guaranteed. All details, dimensions, square footage, illustrations and pricing are approximate and may vary from actual plans and specifications. Contact an Eagle Sales Consultant for details. Current information as of 11th July 2025



SECOND FLOOR

