





9455 Creek Summit Circle #15

AT CREEK'S EDGE AT STONY POINT



-  3 Bedrooms
-  3.5 Bathrooms
-  2008 Square Feet
-  2 Car Garage

\$549,900



MOVE-IN READY! Featuring 3 bedrooms, 3.5 baths, and 2,008 square feet, this 3-story townhome shows off its curb appeal while keeping its 2-car rear load garage neatly tucked away. The basement level features the garage, as well as a bonus room and full bath/closet to make an additional bedroom or even a study. Head on up to the main floor where you will find your spacious kitchen that flows seamlessly into the family room. Right off the family room is a rear deck perfect for sipping your morning coffee or your afternoon sweet tea. A walk-in pantry allows you additional storage, and a flex space at the front with French doors gives you that tucked away space you desire without being too far from everything. On the third floor is where you'll find your primary suite with walk-in closet and private full bath, as well as two additional bedrooms and full bath. A laundry room completes the space for added convenience.

Features of this Home

- Fireplace in Family Room
- 42" Yorktowne Henning Neutral Paint Kitchen Cabinets with Trash Can Pull Out, Crown Molding, Refrigerator Enclosure and more
- Quartz Countertops in Kitchen
- Ceramic Tile Backplash in Kitchen
- Mohawk Pergo Landmore Cardamom Oak Flooring in Main Living Areas
- Ceramic Tile Flooring in Bathrooms
- Frameless Shower Door in Primary Bath
- GE Stainless Steel Appliance Package including Gas Range

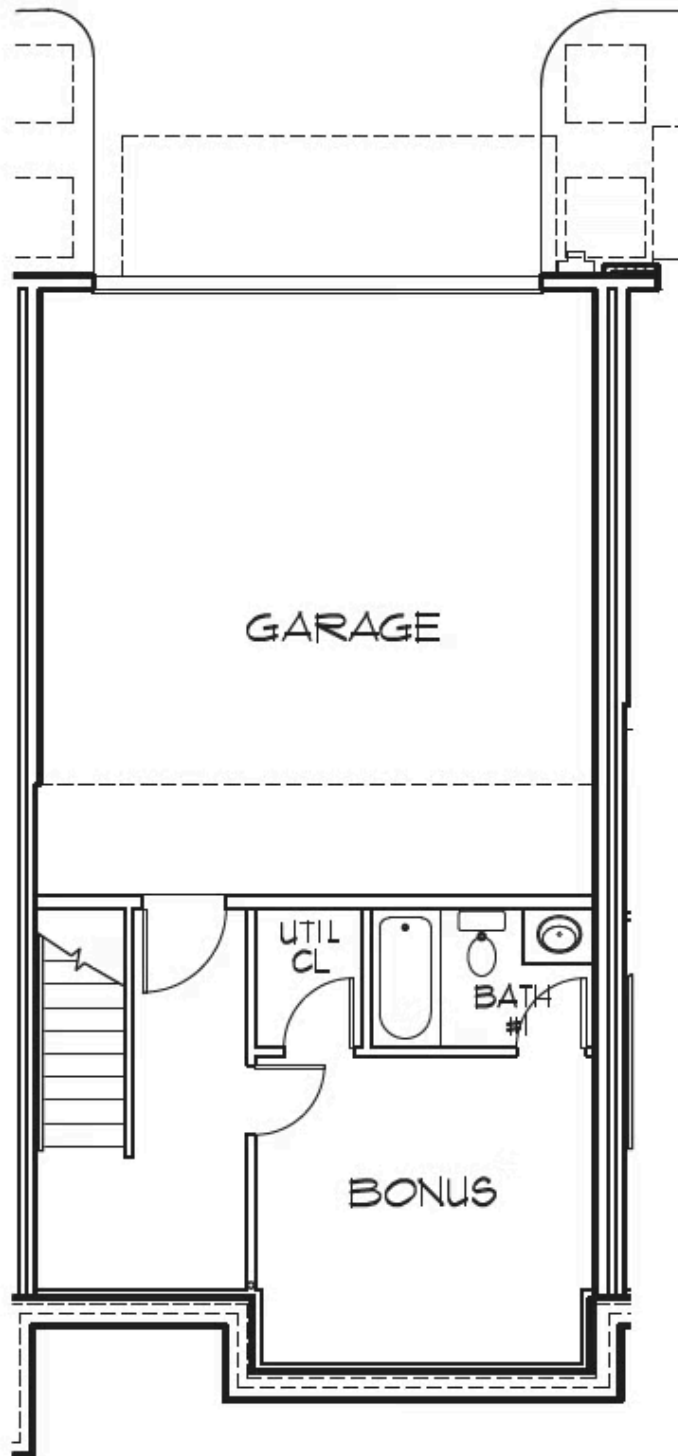
eagleofva.com

9455 Creek Summit Circle #15

AT CREEK'S EDGE AT STONY POINT



BASEMENT



eagleofva.com

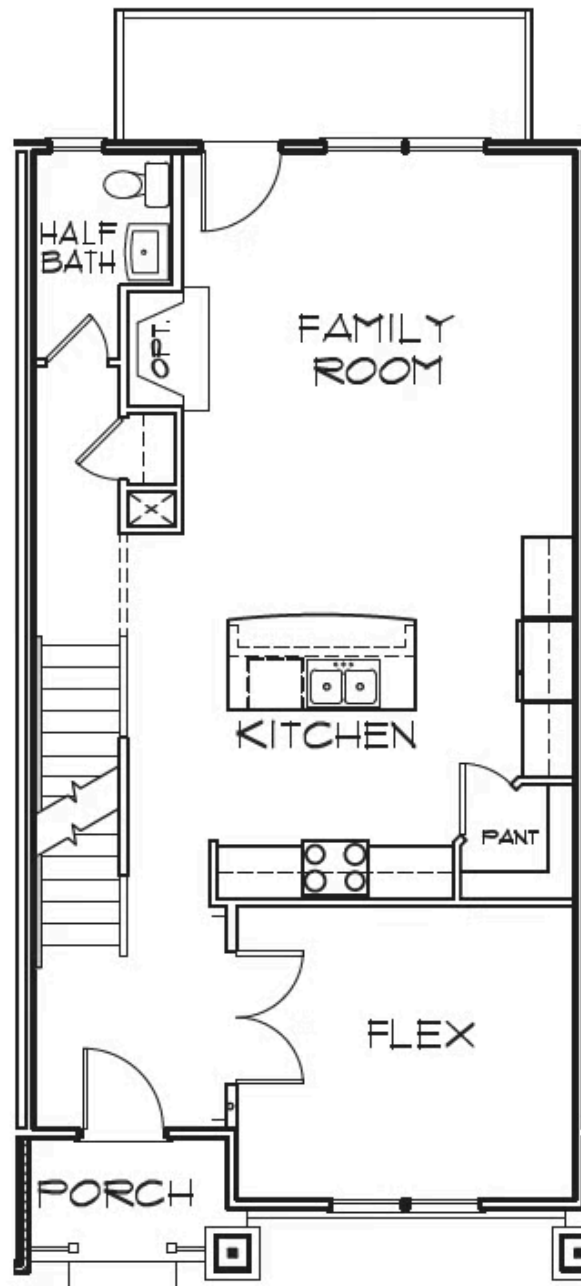
This information is deemed reliable but not guaranteed. All details, dimensions, square footage, illustrations and pricing are approximate and may vary from actual plans and specifications. Contact an Eagle Sales Consultant for details. Current information as of 10th June 2025

9455 Creek Summit Circle #15

AT CREEK'S EDGE AT STONY POINT



FIRST FLOOR



eagleofva.com

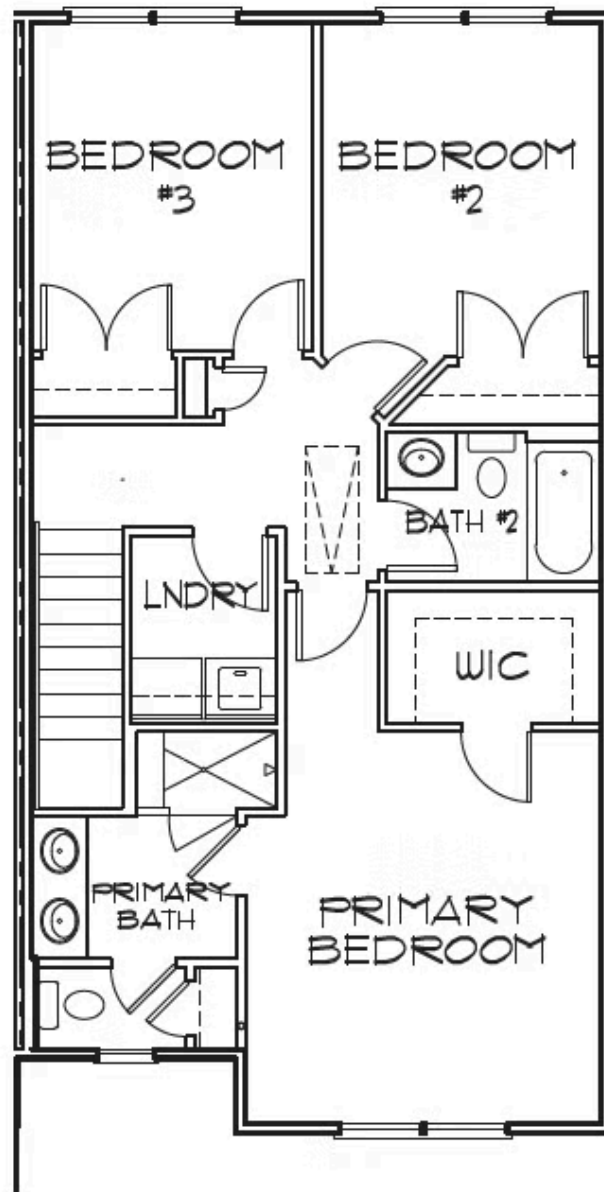
This information is deemed reliable but not guaranteed. All details, dimensions, square footage, illustrations and pricing are approximate and may vary from actual plans and specifications. Contact an Eagle Sales Consultant for details. Current information as of 10th June 2025

9455 Creek Summit Circle #15

AT CREEK'S EDGE AT STONY POINT



SECOND FLOOR



eagleofva.com