




9449 Creek Summit Circle #12

AT CREEK'S EDGE AT STONY POINT



-  3 Bedrooms
-  3.5 Bathrooms
-  2008 Square Feet
-  2 Car Garage

\$549,000



This 3-story townhome shows off its curb appeal while keeping it's 2-car rear load garage neatly tucked away. Featuring 3 bedrooms, 3.5 baths, and 2,008 square feet, there is still time to personalize and make this home your own! The basement level features the garage, as well as a bonus room and full bath/closet to make an additional bedroom or even a study. Head on up to the main floor where you will find your spacious kitchen that flows seamlessly into the family room. Right off the family room is a rear deck perfect for sipping your morning coffee or your afternoon sweet tea. A walk-in pantry allows you additional storage, and a flex space at the front with French doors gives you that tucked away space you desire without being too far from everything. On the third floor is where you'll find your primary suite with walk-in closet and private full bath, as well as two additional bedrooms and full bath. A laundry room completes the space for added convenience.

Features of this Home

- Rear load 2-car garage
- First floor (basement level) bedroom and full bath
- Flex room on the main level with French doors
- Rear deck on main level
- Walk-in pantry

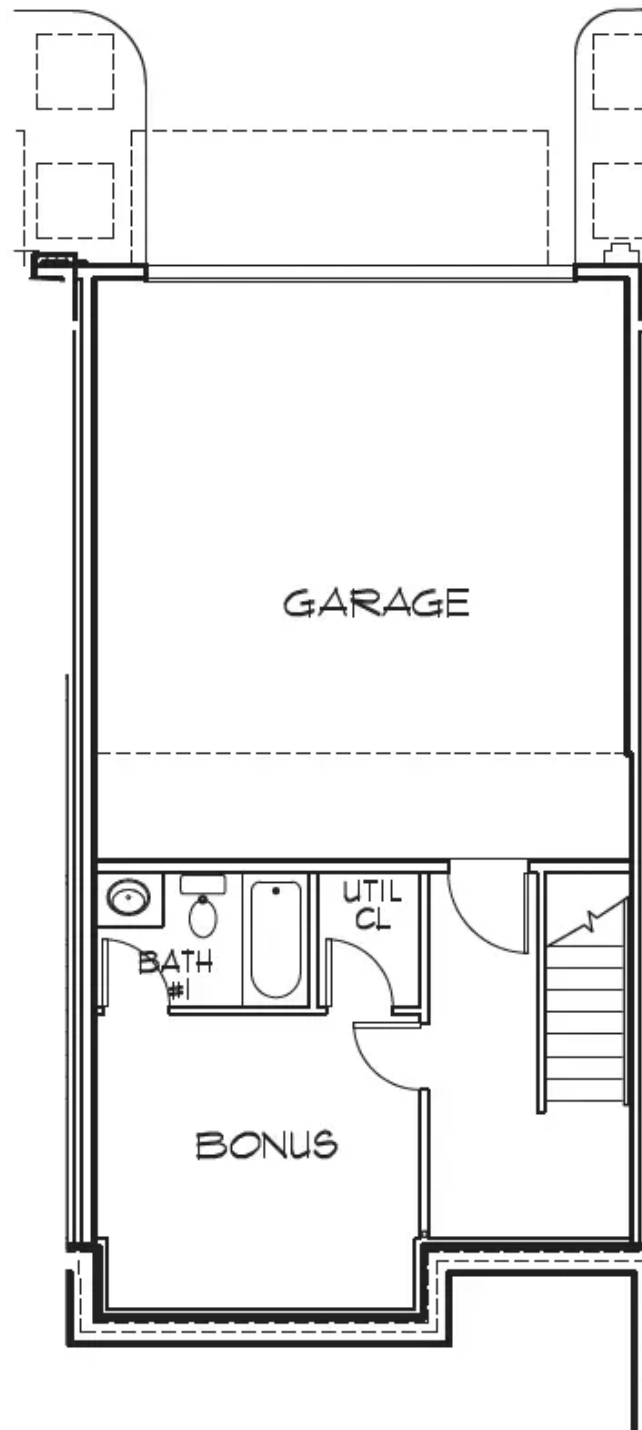
eagleofva.com

9449 Creek Summit Circle #12

AT CREEK'S EDGE AT STONY POINT



BASEMENT



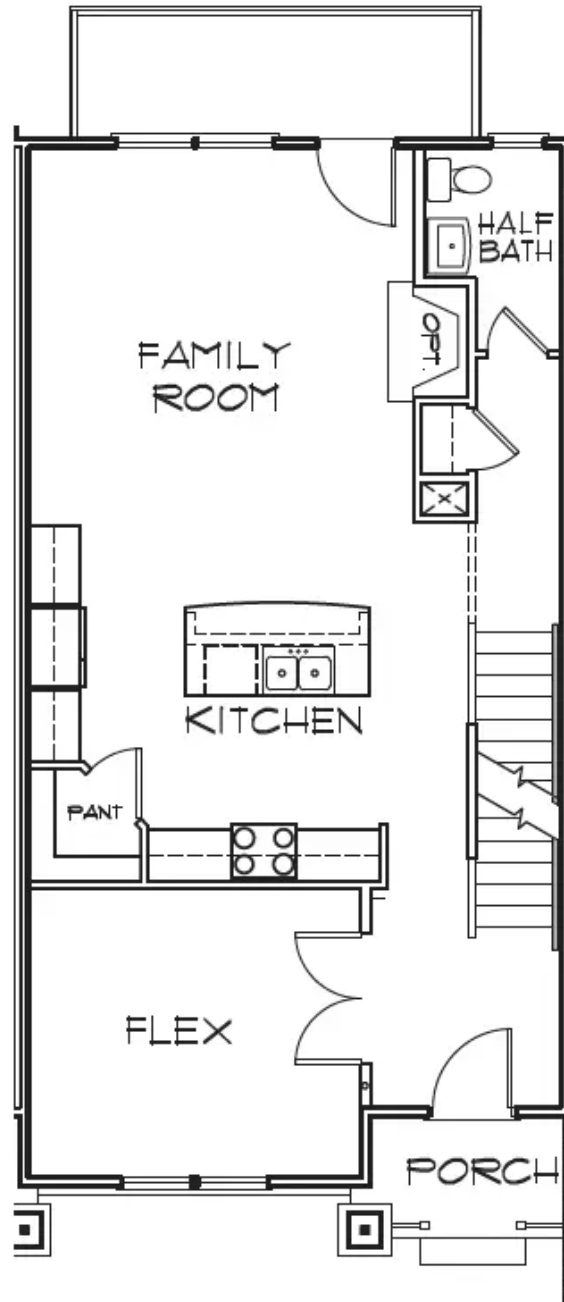
eagleofva.com

9449 Creek Summit Circle #12



AT CREEK'S EDGE AT STONY POINT

FIRST FLOOR



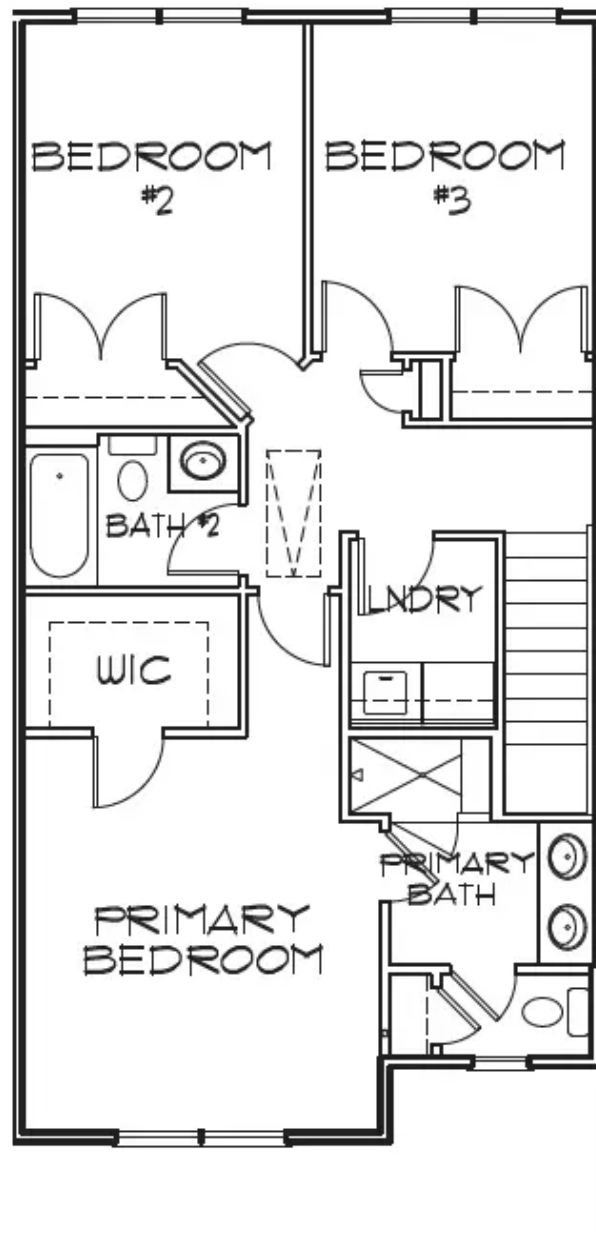
eagleofva.com

9449 Creek Summit Circle #12



AT CREEK'S EDGE AT STONY POINT

SECOND FLOOR



eagleofva.com