






THE Grand Charleston

AT THE PARKE AT COLD CREEK



-  3 Bedrooms
-  2 Bathrooms
-  1,595 Square Feet
-  2 Car Garage
-  1 Levels



Welcome home to the Grand Charleston! Enjoy the ease of one level living in this thoughtfully designed floor plan featuring an open family room, kitchen, and breakfast nook that create the perfect space for everyday life and entertaining. A private primary suite offers a relaxing retreat with a walk-in closet and attached primary bath, while two additional bedrooms provide flexibility for guests or home office needs. Step outside to your deck for outdoor enjoyment, and stay organized with a convenient mudroom and utility space off the garage. Comfortable, functional, and designed for how you live.

eagleofva.com

THE Grand Charleston

AT THE PARKE AT COLD CREEK



Traditional



Folk Victorian



Craftsman



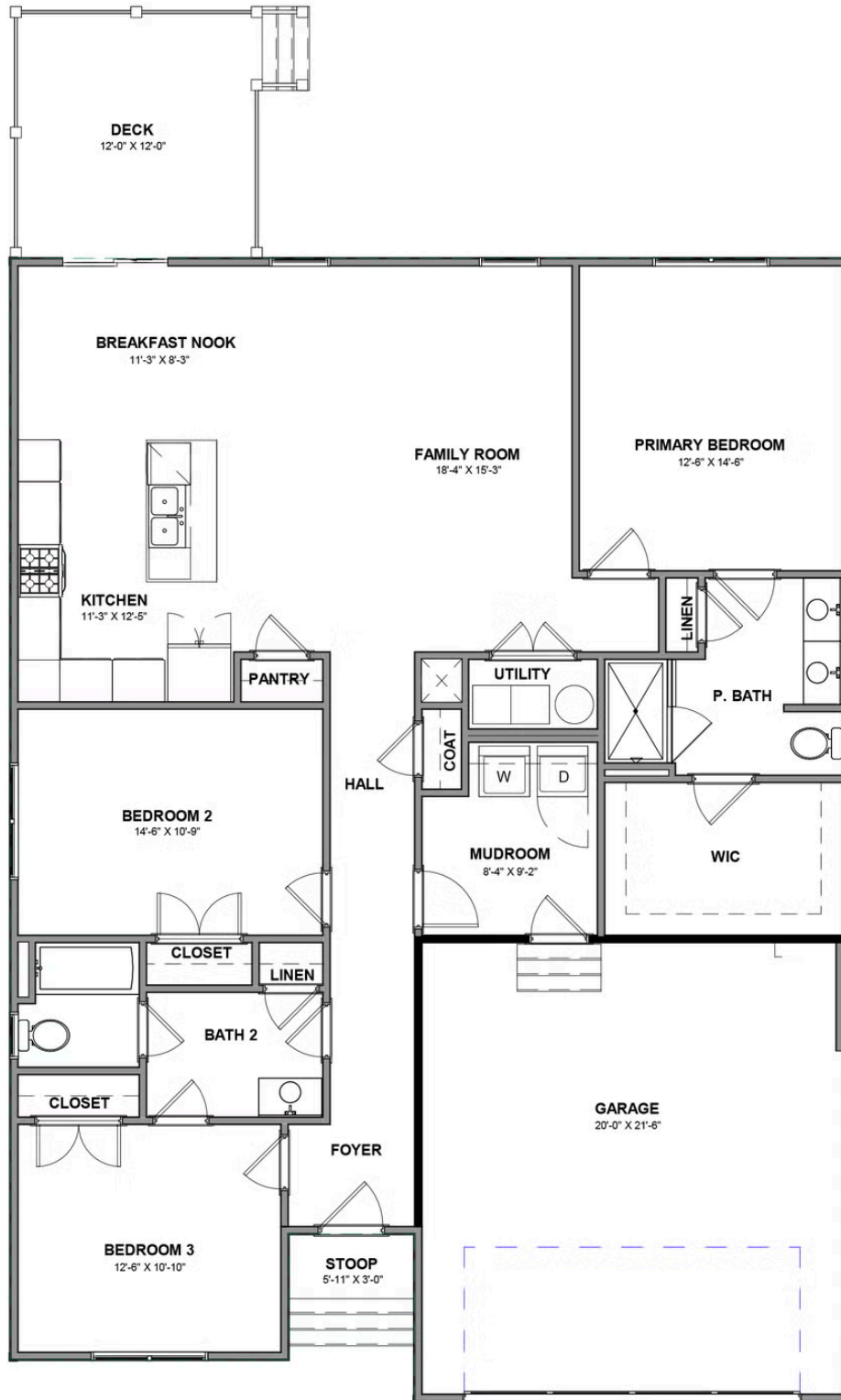
European

eagleofva.com

This information is deemed reliable but not guaranteed. All details, dimensions, square footage, illustrations and pricing are approximate and may vary from actual plans and specifications. Contact an Eagle Sales Consultant for details. Current information as of 29th April 2026

THE Grand Charleston

AT THE PARKE AT COLD CREEK



eagleofva.com