






THE Belmont

AT THE PARKE AT COLD CREEK



-  2 Bedrooms
-  2.5 Bathrooms
-  1,806 Square Feet
-  2 Car Garage
-  1 Levels



Downsizing life meets upscale living with the Belmont, a one-level plan that packs 2 bedrooms, 2.5 baths, a 2-car garage and wealth of amenities into an impressive 1,800 square feet of space. Designed for living large on a smaller scale, the perfectly proportioned layout blends kitchen, dining, and family room into an open-flow roomscape crafted for comfort and entertaining. A large back deck is the spot for relaxing on warm sunny days, while a spacious family room keeps you connected. Nestled off the family room, the primary suite offers a comfy retreat with splendid dual-sink bath and walk-in closet. A front study is ideal as either home office or den, while an additional bedroom with full bath is always ready for guests.

eagleofva.com

THE Belmont

AT THE PARKE AT COLD CREEK



Traditional



Arts & Crafts



Craftsman



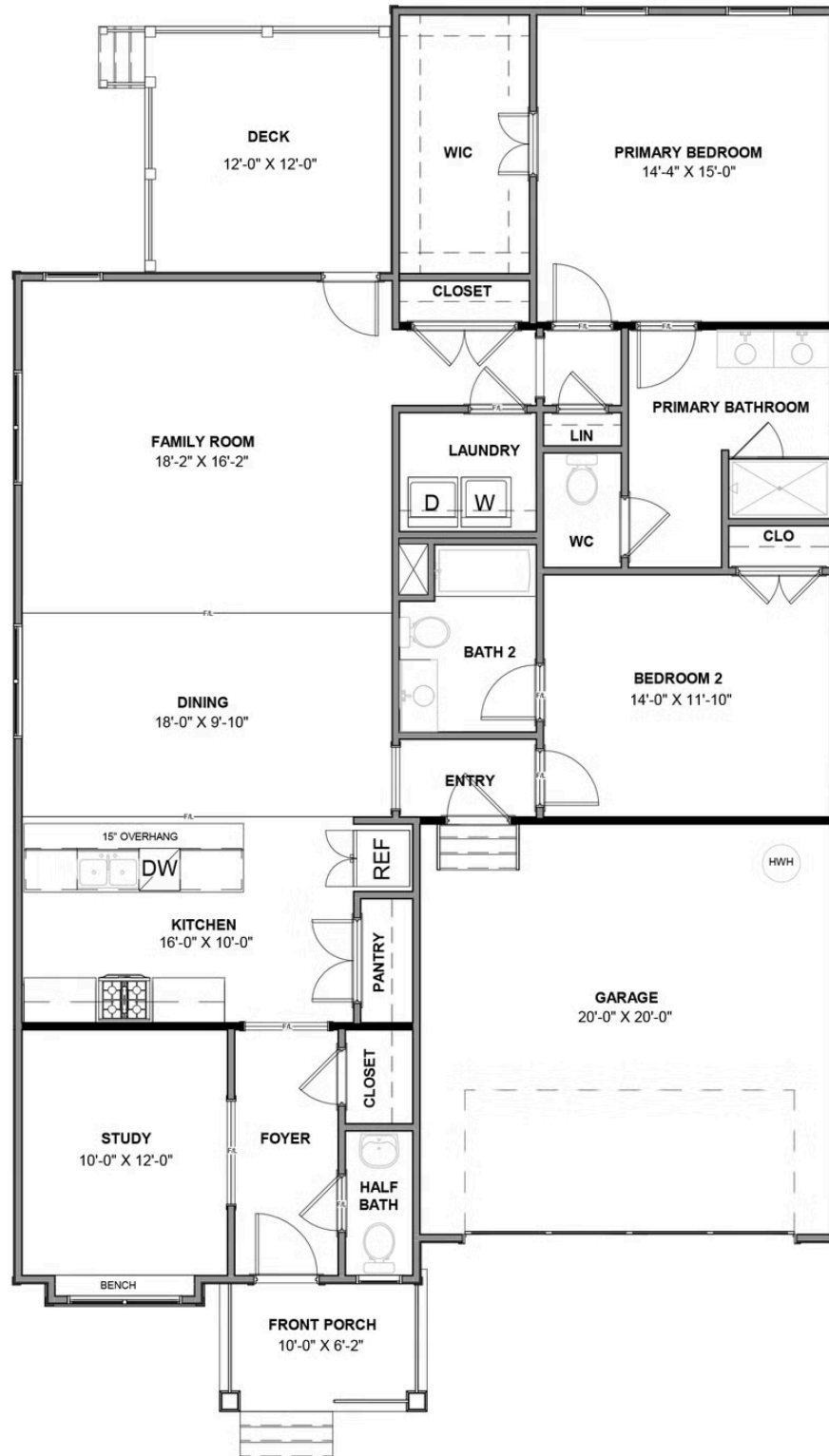
Traditional

eagleofva.com

This information is deemed reliable but not guaranteed. All details, dimensions, square footage, illustrations and pricing are approximate and may vary from actual plans and specifications. Contact an Eagle Sales Consultant for details. Current information as of 29th April 2026

THE Belmont

AT THE PARKE AT COLD CREEK



eagleofva.com