




# THE Lockwood

AT VILLETTA POINTE



-  3 Bedrooms
-  2.5 Bathrooms
-  1,782 Square Feet
-  2 Levels



**Brand new plan!** Welcome to the Lockwood — where everyday living feels just right. Step into a home thoughtfully designed to fit the rhythm of your life. The spacious family room is perfect for game day gatherings, cozy movie nights, or simply unwinding after a long day. In the heart of the home, the kitchen invites connection with its welcoming island and sunny breakfast nook — ideal for savoring home-cooked meals or sipping your morning coffee as you scroll the headlines. Need a quiet corner to focus or relax? A dedicated study on the main floor offers just that — whether you're working from home or getting lost in your latest read. Upstairs, your primary suite becomes your personal retreat, complete with a generous walk-in closet and a private bath designed for comfort. Two additional bedrooms and a full bath on the opposite end of the hall offer space and privacy for family or guests. The Lockwood isn't just a home — it's the space where your everyday moments become lasting memories.

[eagleofva.com](http://eagleofva.com)

# THE Lockwood

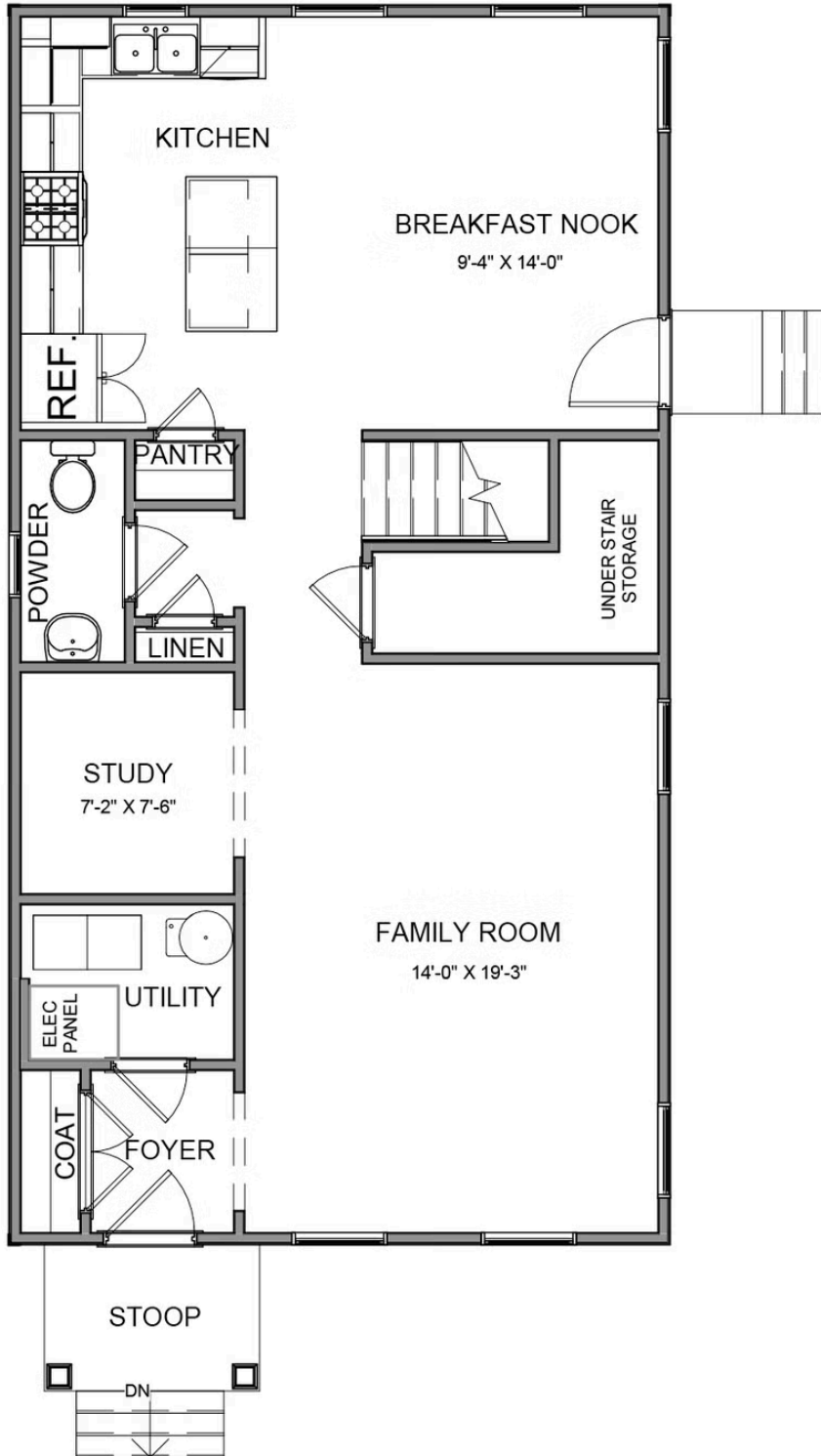
AT VILLETTA POINTE



[eagleofva.com](http://eagleofva.com)

This information is deemed reliable but not guaranteed. All details, dimensions, square footage, illustrations and pricing are approximate and may vary from actual plans and specifications. Contact an Eagle Sales Consultant for details. Current information as of 26th May 2026

FIRST FLOOR



SECOND FLOOR

