


8439 Villetta Pointe Lane

AT VILLETTE POINTE



-  3 Bedrooms
-  2.5 Bathrooms
-  1 600 Square Feet

\$459,546



Introducing the Pritchard, one of Eagle's newest floor plans that is built to match your lifestyle.

The main living area is spacious and cozy, with a kitchen overlooking the family room and breakfast nook. An island in the kitchen gives you even more countertop space and sets the stage for entertaining. The primary bedroom is tucked away at the rear of the home with walk-in closet and primary bath with dual vanities. And our favorite part of the home? A closet and storage area under the stairs that just keeps going - you'll have to explore it for yourself! A half bath and laundry room complete the first floor. Head up to the second floor which has two generously sized bedrooms, a full bath, and an additional storage area.

Features of this Home

- Kitchen features 42" cabinets, luxury countertops, and island
- First floor primary bedroom suite
- Primary bath features ceramic tile flooring and shower
- LVP flooring throughout main living areas
- Finished storage room with awning windows
- Patio
- Full front porch

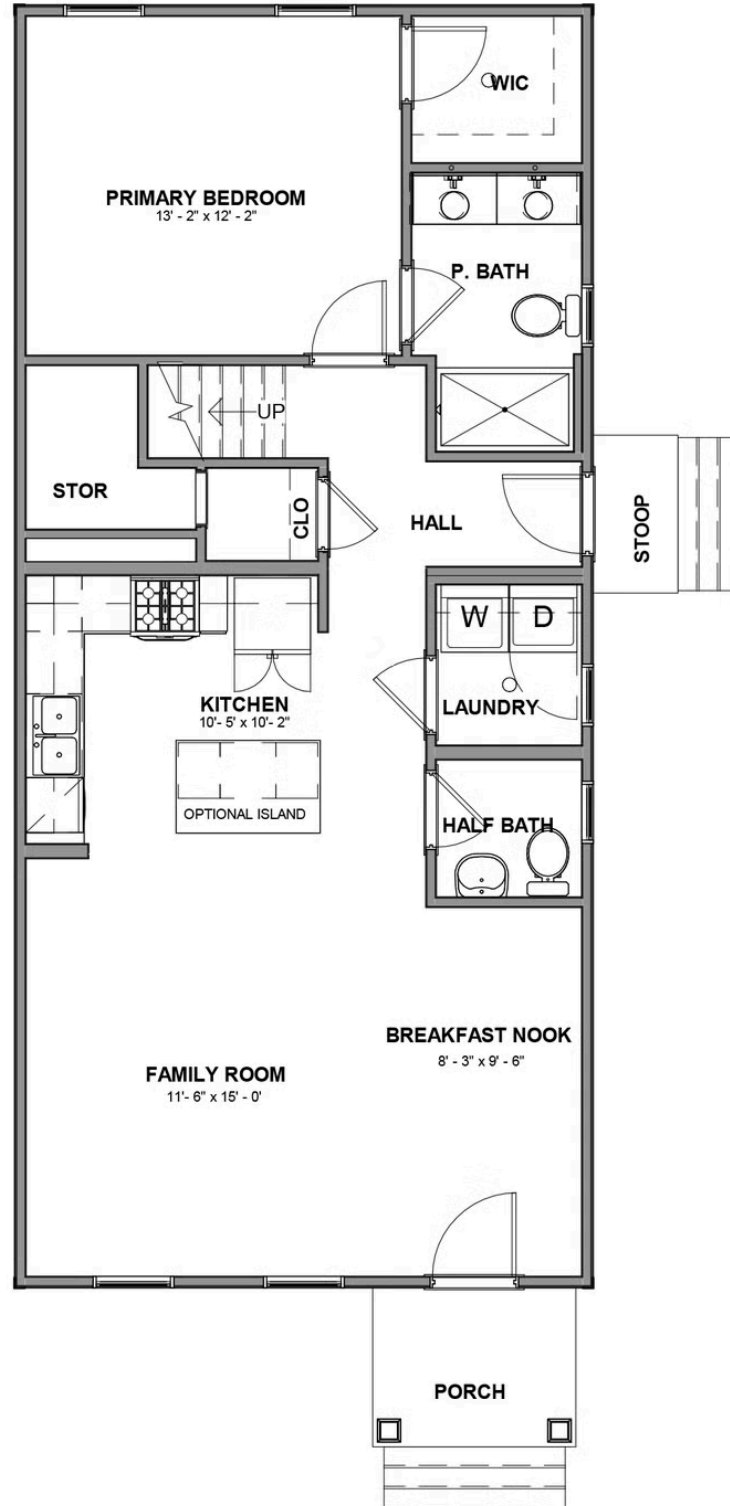
eagleofva.com

8439 Villetta Pointe Lane

AT VILLETTE POINTE



FIRST FLOOR



eagleofva.com

SECOND FLOOR

