





8776 Hope Farm Lane

AT BRUNSWICK



-  4 Bedrooms
-  3.0 Bathrooms
-  2354 Square Feet
-  2 Car Garage

\$514,900



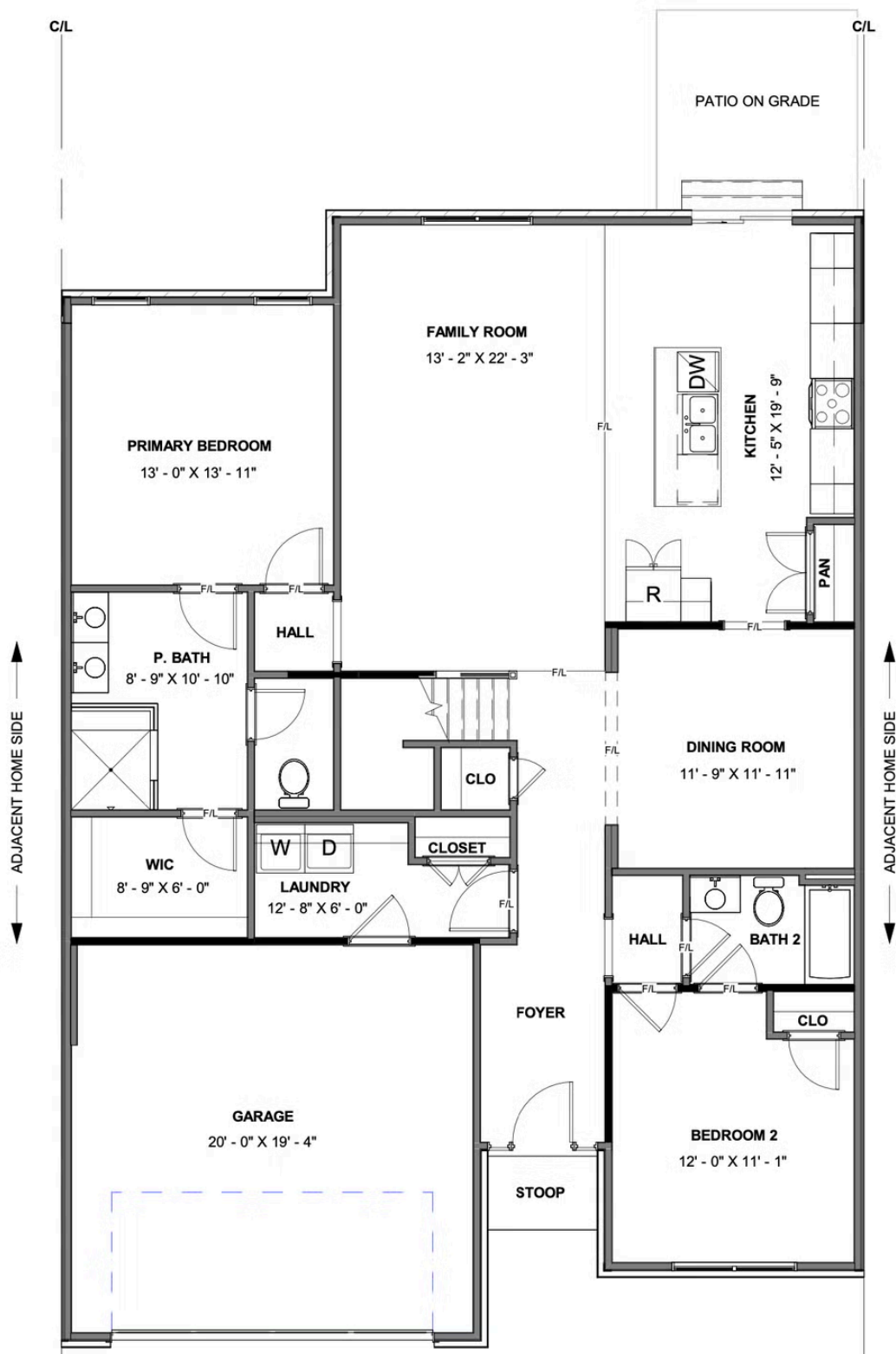
Welcome home to the Brady, a 2-story townhome with 2-car garage and plenty of room to spread out and call your own. Enter through the garage and into your laundry/mud room. The open concept kitchen features a large island overlooking the family room, spacious pantry, and access to the dining room. Tucked off the family room is your primary bedroom retreat with large primary bath and walk-in closet. A second bedroom and full bath can be found at the front of the home. Head on up to your second floor where you'll find two bedrooms, a full bath, and storage area.

Features of this Home

- First Floor Primary Bedroom Suite with Serenity Shower
- Wainscoting and Crown Molding in Dining Room
- Formal Dining Room
- 9' Ceilings on First Floor
- Walk-In Unfinished Conditioned Storage
- Four Bedrooms
- Front View of Large Pond & Monarch Waystation

eagleofva.com

FIRST FLOOR

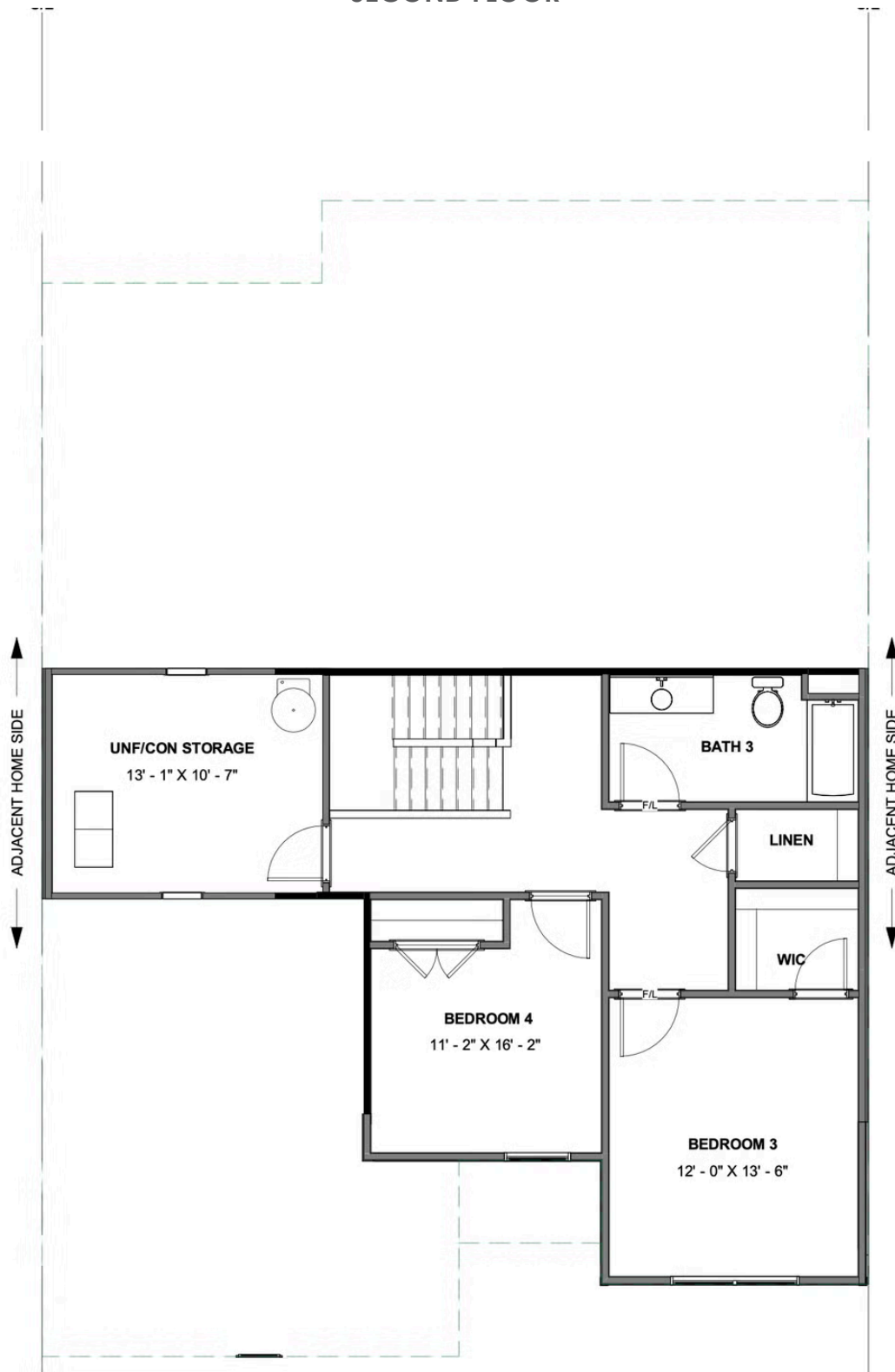


8776 Hope Farm Lane

AT BRUNSWICK



SECOND FLOOR



eagleofva.com