





8680 Hope Farm Lane

AT BRUNSWICK



-  2 Bedrooms
-  2.0 Bathrooms
-  1692 Square Feet
-  2 Car Garage

\$477,900



MOVE-IN READY! The Lillie is the one level townhome you've been looking for. Complete with 2-car garage, the Lillie provides just the right amount of space. Enter from your garage and into the laundry room and mud room, complete with an additional storage closet. A study with French doors provides the perfect space to set up your home office, play room for the grandkids, or anything that renews your energy. The open concept layout offers a kitchen with pantry and large island overlooking the dining area and family room, perfect for keeping everyone connected. Your primary bedroom is tucked down a hallway with a spacious primary bath and large walk-in closet. At the front of the home you'll find an additional bedroom and full bath.

Features of this Home

- Study with French Doors
- Stainless Steel Free Standing Range, Over the Range Microwave, and Dishwasher
- Extra Storage Area off of Laundry Room
- Large Walk-in Closet in Primary Bedroom
- Recessed Lighting Package in Family Room
- Laminate Pergo Flooring in Main Living Areas

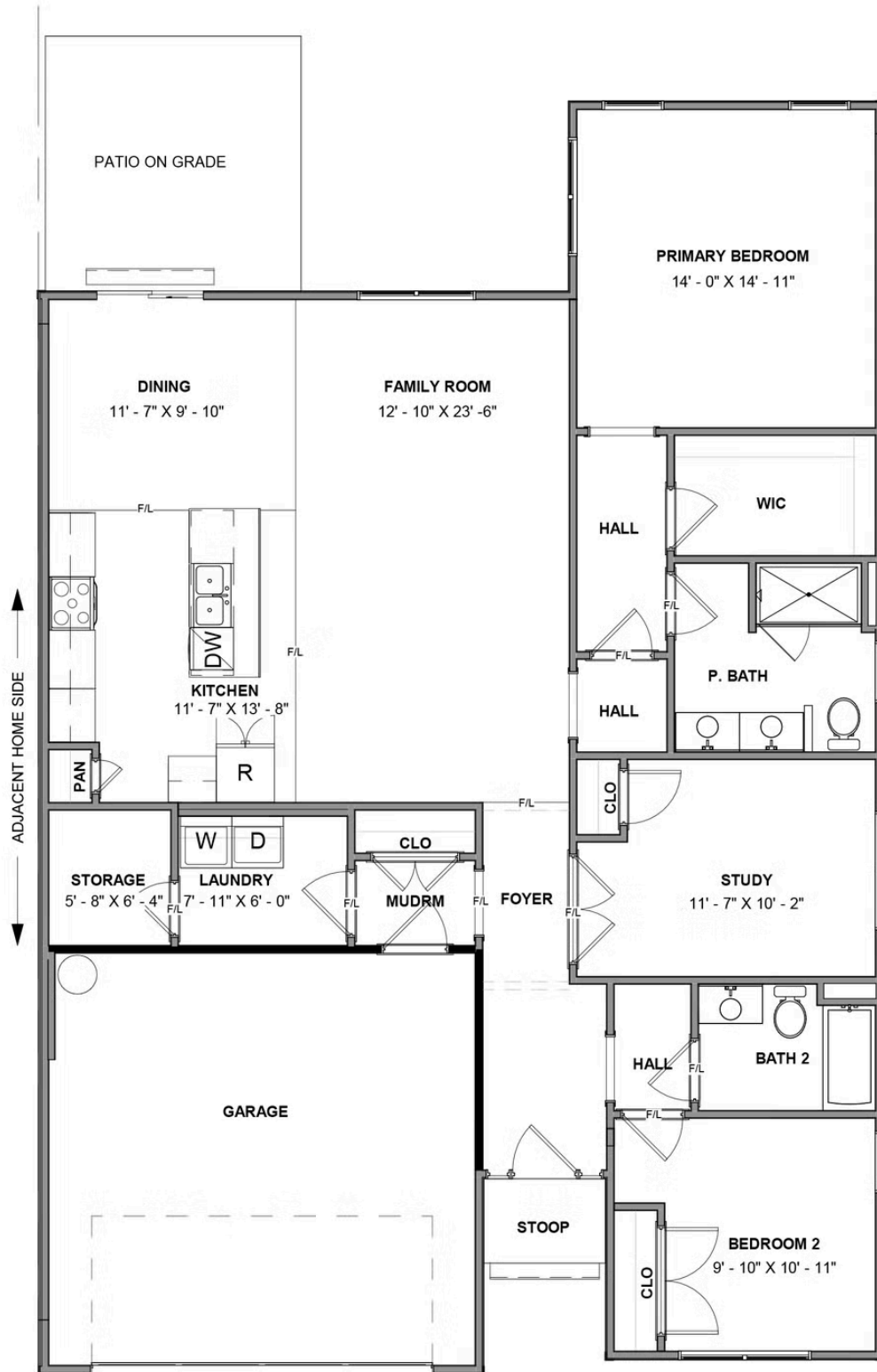
eagleofva.com

8680 Hope Farm Lane

AT BRUNSWICK



FIRST FLOOR



eagleofva.com