





8668 Hope Farm Lane

AT BRUNSWICK



-  3 Bedrooms
-  3.0 Bathrooms
-  2330 Square Feet
-  2 Car Garage

\$517,017



Welcome home to the Brady, a 2-story townhome with 2-car garage and plenty of room to spread out and call your own. Enter through the garage and into your laundry/mud room. The open concept kitchen features a large island overlooking the family room, spacious pantry, and access to the dining room. Tucked off the family room is your primary bedroom retreat with large primary bath and walk-in closet. A second bedroom and full bath can be found at the front of the home. Head on up to your second floor where you'll find a loft, third bedroom with walk-in closet, and full bath.

Features of this Home

- First Floor Primary Bedroom Suite
- Formal Dining Room
- Loft
- 9' Ceilings on First Floor
- LED Recessed Lighting Package with Dimmer Switch in Family Room and Primary Bedroom
- Walk-In Unfinished Conditioned Storage
- Hardwood Stairs
- Tile Shower in Primary and Secondary Bathroom

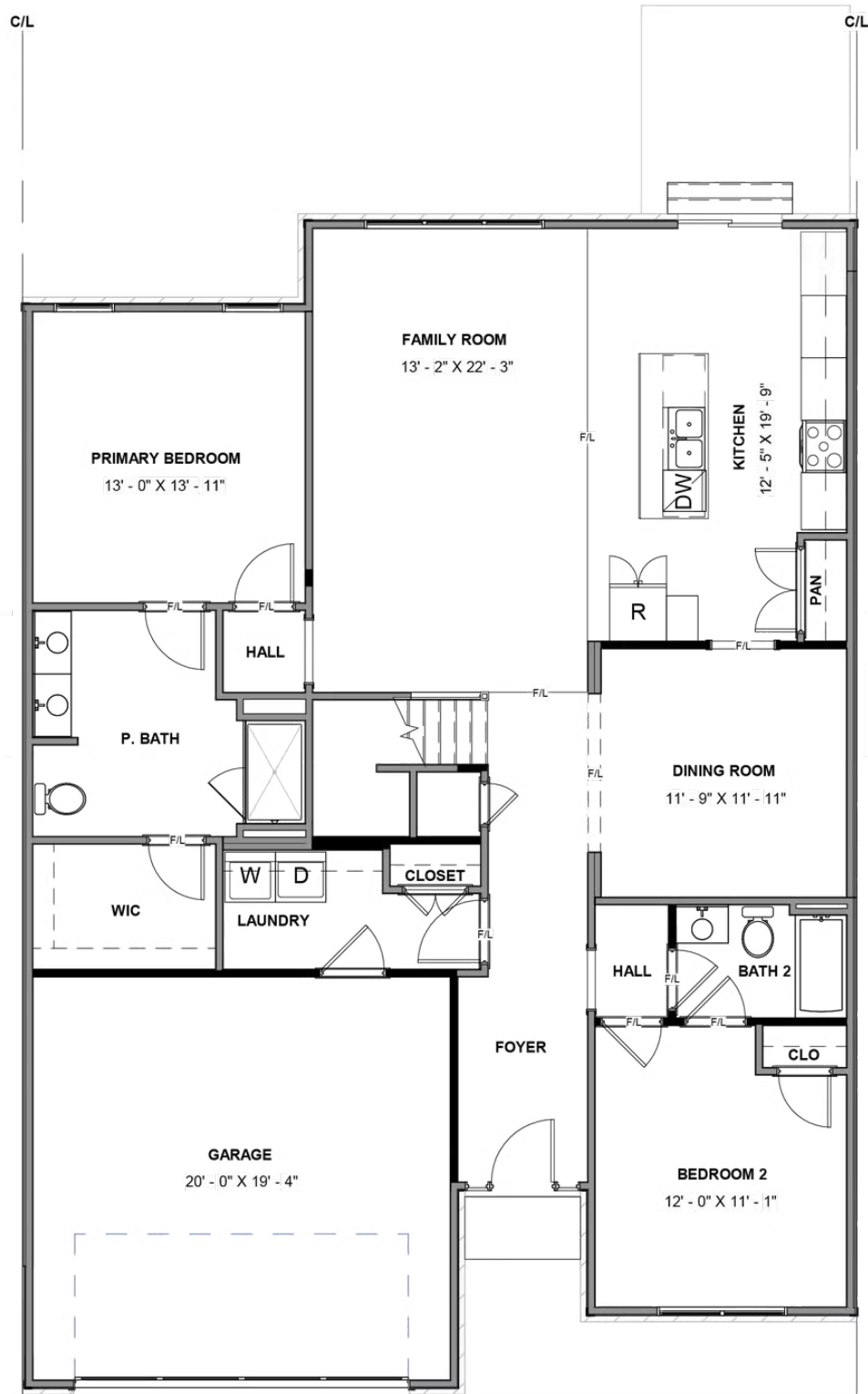
eagleofva.com

8668 Hope Farm Lane

AT BRUNSWICK



FIRST FLOOR



eagleofva.com

SECOND FLOOR

