






THE Linden Terrace

AT READERS BRANCH SINGLE FAMILY HOMES



-  3 Bedrooms
-  2.5 Bathrooms
-  2,918 Square Feet
-  2 Car Garage
-  2 Levels



Think you've seen it all? Then you haven't seen Linden Terrace, a 2-story plan with 3 bedrooms, 2.5 baths, a 2-car garage, and 2,700 glorious square feet of pure home happiness. A front porch made for sipping lemonade and social graces welcomes you inside to a chef's dream kitchen offering a scenic vista overlooking both breakfast nook and family room. A formal dining room and home study lend sophistication and flexibility, while a secluded first floor primary suite with prodigious walk-in closet and dual-sink bath offer a quiet escape. Step downstairs to the terrace level where a rec room, full bath, and two additional bedrooms blend playfulness, with easygoing comfort and everyday livability—while a cavernous unfinished storage area is ready for whatever you can imagine.

Features of this Floorplan

- Main level primary bedroom
- Study
- Butler's pantry
- Formal dining room
- Terrace level with rec area and additional bedrooms
- Multiple primary bath configurations
- Option for screened porch
- Option for expanded rec room
- Option for Florida room

eagleofva.com

THE Linden Terrace

AT READERS BRANCH SINGLE FAMILY HOMES



Craftsman



Folk Victorian



Traditional

eagleofva.com

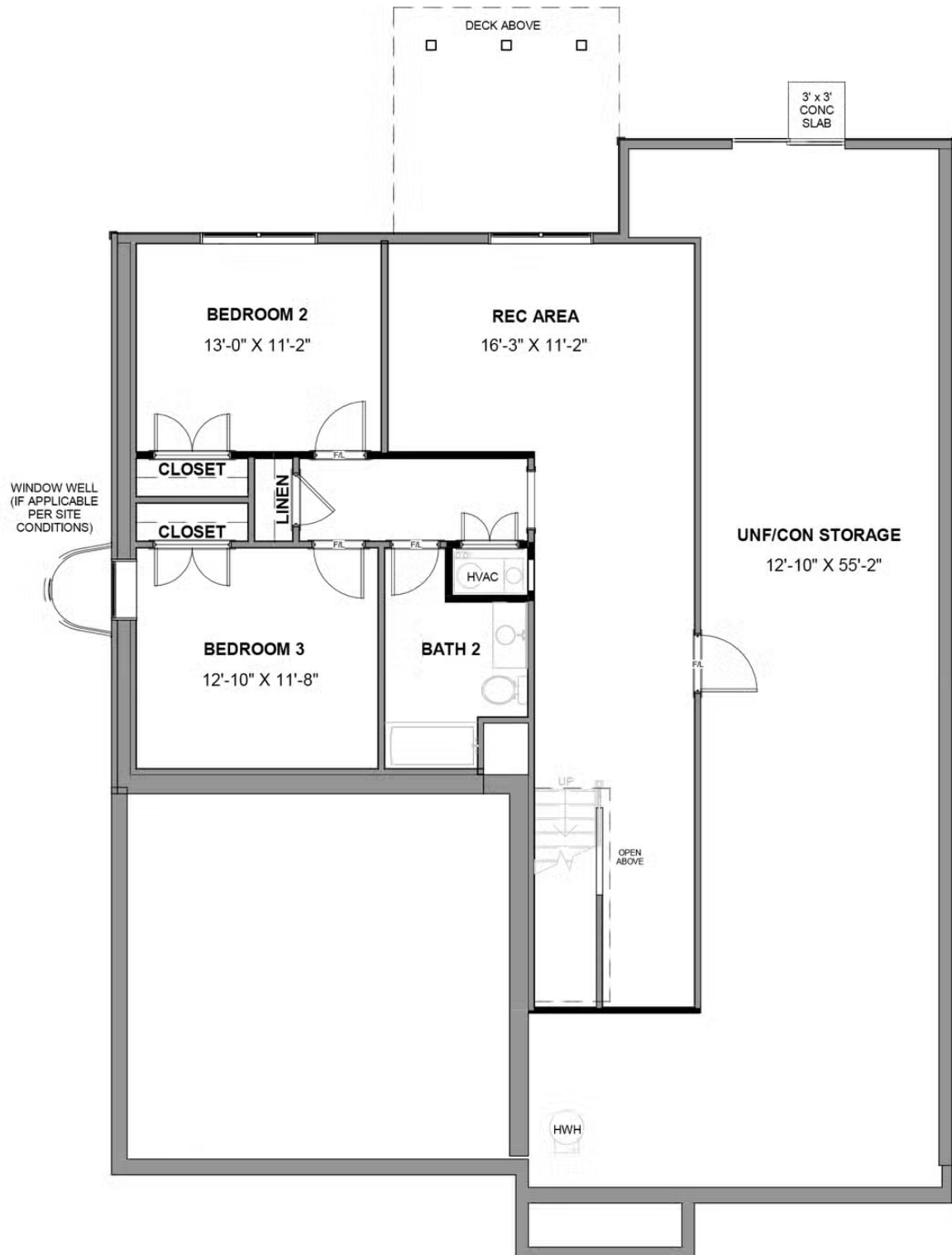
This information is deemed reliable but not guaranteed. All details, dimensions, square footage, illustrations and pricing are approximate and may vary from actual plans and specifications. Contact an Eagle Sales Consultant for details. Current information as of 19th April 2024

THE Linden Terrace

AT READERS BRANCH SINGLE FAMILY HOMES



TERRACE LEVEL



eagleofva.com

This information is deemed reliable but not guaranteed. All details, dimensions, square footage, illustrations and pricing are approximate and may vary from actual plans and specifications. Contact an Eagle Sales Consultant for details. Current information as of 19th April 2024

THE Linden Terrace

AT READERS BRANCH SINGLE FAMILY HOMES



MAIN LEVEL



eagleofva.com

This information is deemed reliable but not guaranteed. All details, dimensions, square footage, illustrations and pricing are approximate and may vary from actual plans and specifications. Contact an Eagle Sales Consultant for details. Current information as of 19th April 2024