





12424 Leith Hill Circle

AT READERS BRANCH



-  3 Bedrooms
-  2.5 Bathrooms
-  2551 Square Feet
-  2 Car Garage

\$699,900



The Caroline blends traditional sensibilities and modern style in over 2500 square feet of space with 3 bedrooms, 2.5 baths, and 2-car garage. From morning news coffee to movie night snacks, the seamless flow between kitchen and family room means life's moments are never interrupted, while a covered courtyard patio and formal dining room extend the possibilities both inside and out. Ready for bed? Then a first floor primary suite with spacious walk-in closet and luxurious dual-sink bath is ready for you, with two additional bedrooms, a full bath, and flexible office space found on the second floor.

Features of this Home

- First floor primary bedroom with Serenity primary bath with bench seat
- Extended side patio
- Twilight see through fireplace from family room to patio
- Recessed lighting
- Large kitchen island and granite countertops
- Butler's pantry

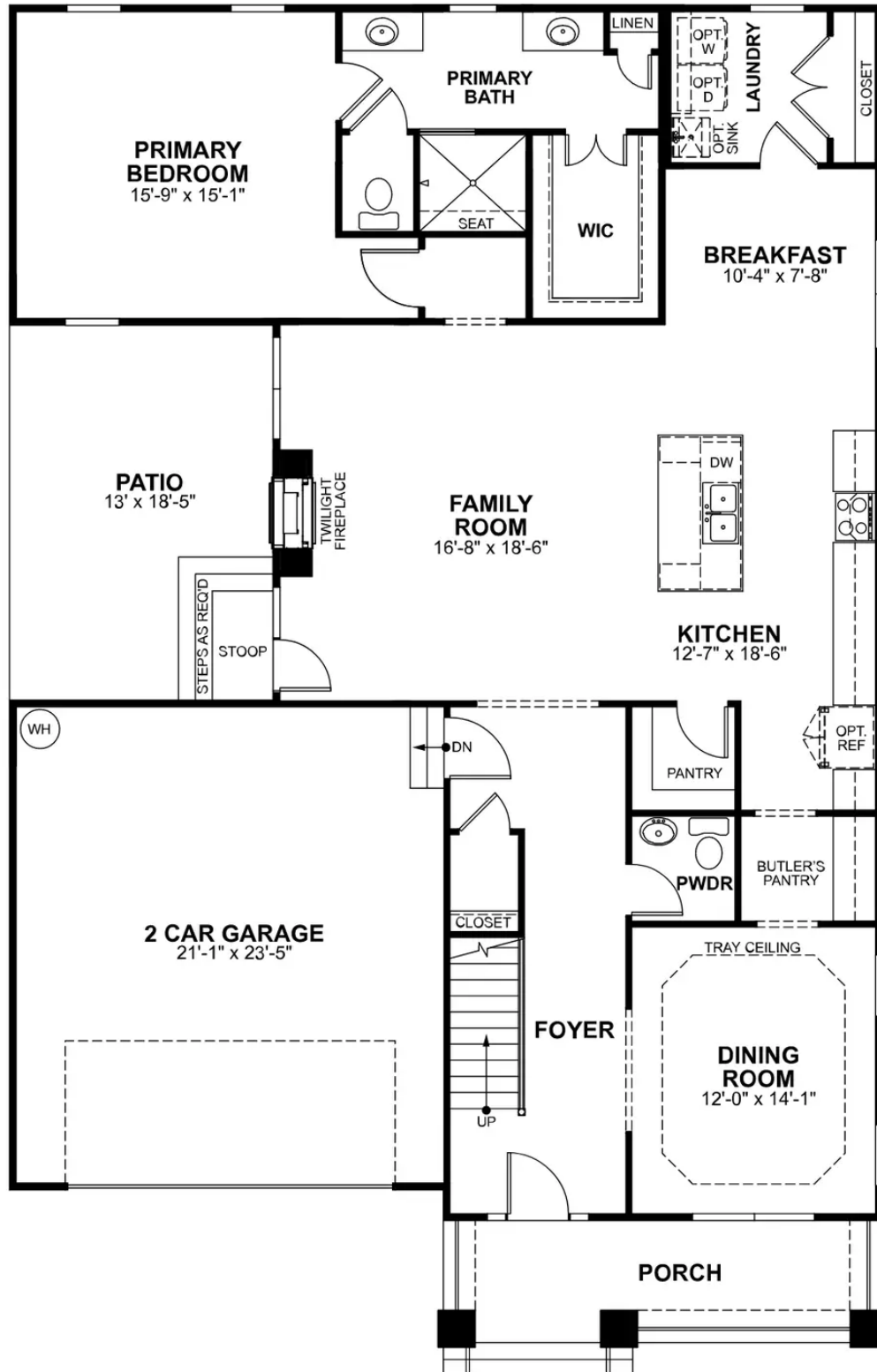
eagleofva.com

12424 Leith Hill Circle

AT READERS BRANCH



FIRST FLOOR



eagleofva.com

SECOND FLOOR

