





12285 North Crossing Drive

AT READERS BRANCH



-  2 Bedrooms
-  2.5 Bathrooms
-  1806 Square Feet
-  2 Car Garage

\$654,980



The Belmont Terrace is a 2 story new home floor plan with 3-4 bedrooms, 3.5 bathrooms, and a 2-car garage. This unique plan allows you to enter on the main floor which features an open-flowing dining room and living room perfect for entertaining. This large space flows directly into the Kitchen with the option to add an island. The primary bedroom suite is also on this level with a luxurious walk-in closet and spacious primary bathroom. There is also a second Bedroom on the main level. You'll head down the stairs to the terrace level where there are huge unfinished storage spaces.

Features of this Home

- Expanded rec room
- Alternate kitchen layout with 42" cabinets, granite countertops, and stainless steel appliances
- Gas fireplace
- LVP flooring throughout main level

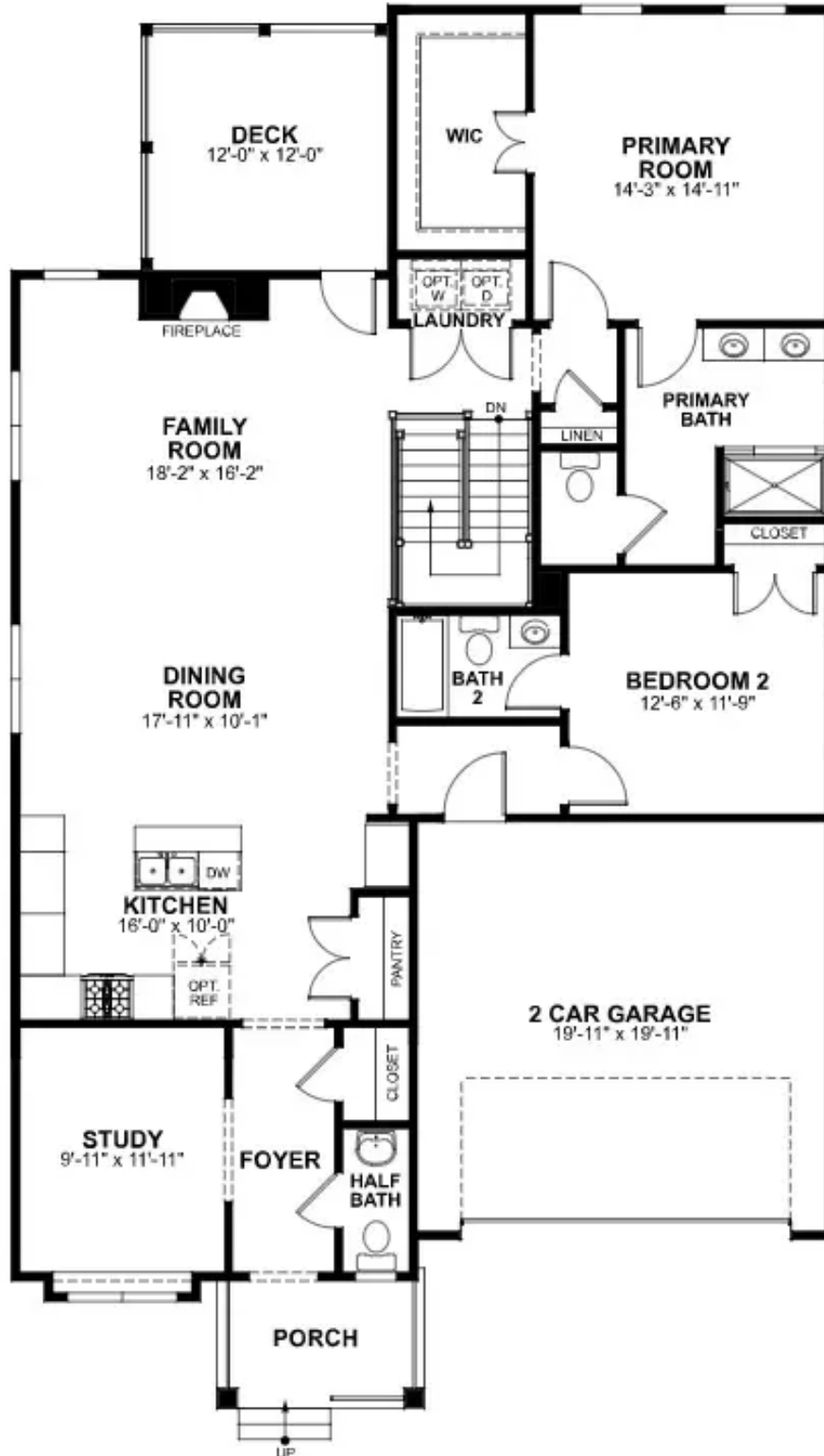
eagleofva.com

12285 North Crossing Drive

AT READERS BRANCH



MAIN LEVEL



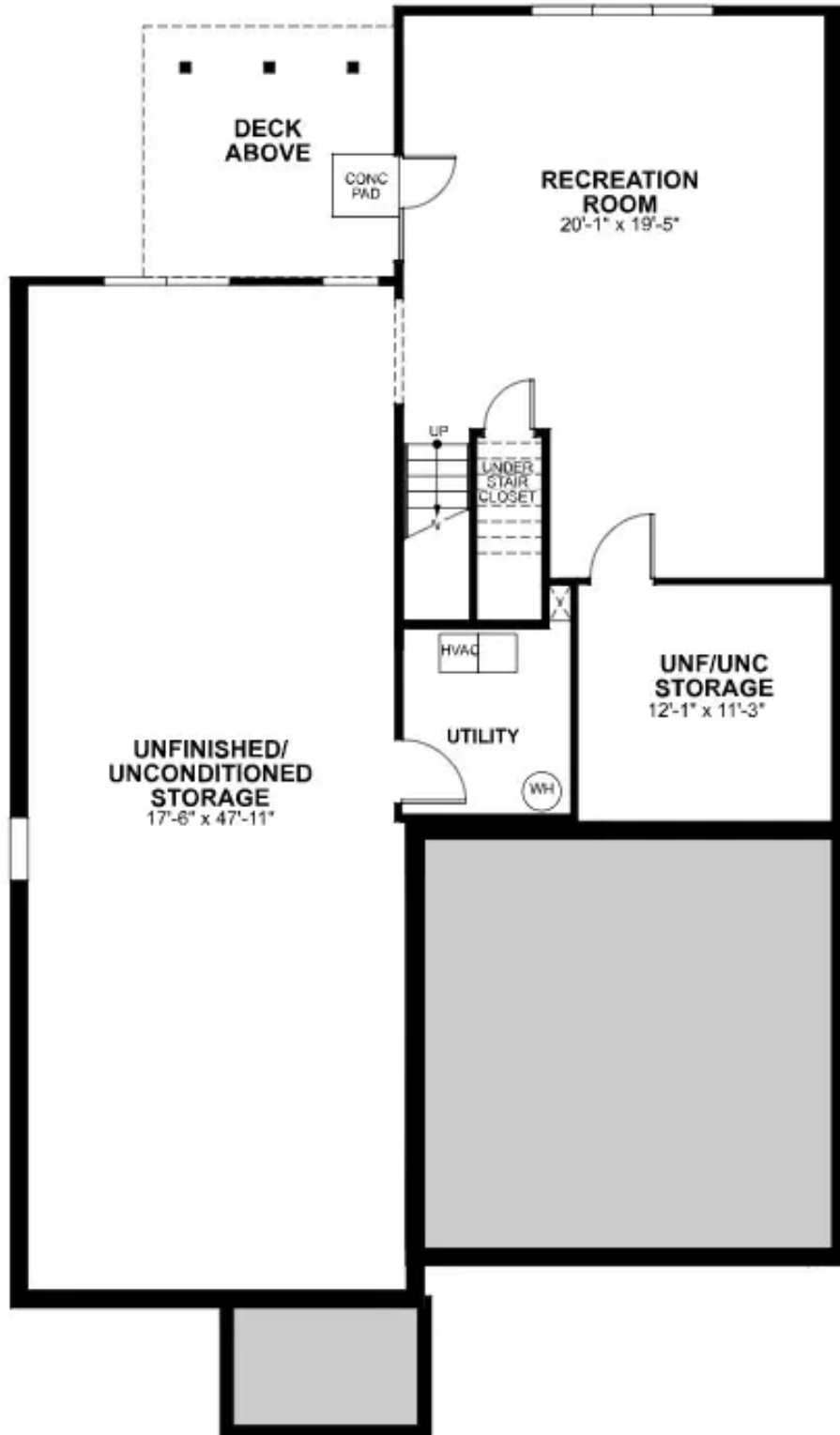
eagleofva.com

12285 North Crossing Drive

AT READERS BRANCH



TERRACE LEVEL



eagleofva.com