






THE Manchester Townhome

AT READERS BRANCH TOWNHOMES



eagle

-  3 - 4 Bedrooms
-  2.5 - 3 Bathrooms
-  2,140 Square Feet
-  2 Car Garage
-  2 Levels



As timeless as it is contemporary, the Manchester Townhome is a 2-story plan with 3 bedrooms, 2.5 baths, and over 2,100 square feet of head-turning curb appeal. Step inside the foyer and be swept away by free-flowing spaciousness that whisks you effortlessly from family room to breakfast nook and on into a beautiful kitchen ready for cooking up memories. The first floor primary suite with expansive bath and walk-in closet leaves nothing to spare. Upstairs offers a loft area, two additional bedrooms, a full bath, and ample opportunities to personalize.

eagleofva.com

This information is deemed reliable but not guaranteed. All details, dimensions, square footage, illustrations and pricing are approximate and may vary from actual plans and specifications. Contact an Eagle Sales Consultant for details. Current information as of 18th August 2025

THE **Manchester Townhome** **eagle**

AT READERS BRANCH TOWNHOMES



eagleofva.com

This information is deemed reliable but not guaranteed. All details, dimensions, square footage, illustrations and pricing are approximate and may vary from actual plans and specifications. Contact an Eagle Sales Consultant for details. Current information as of 18th August 2025

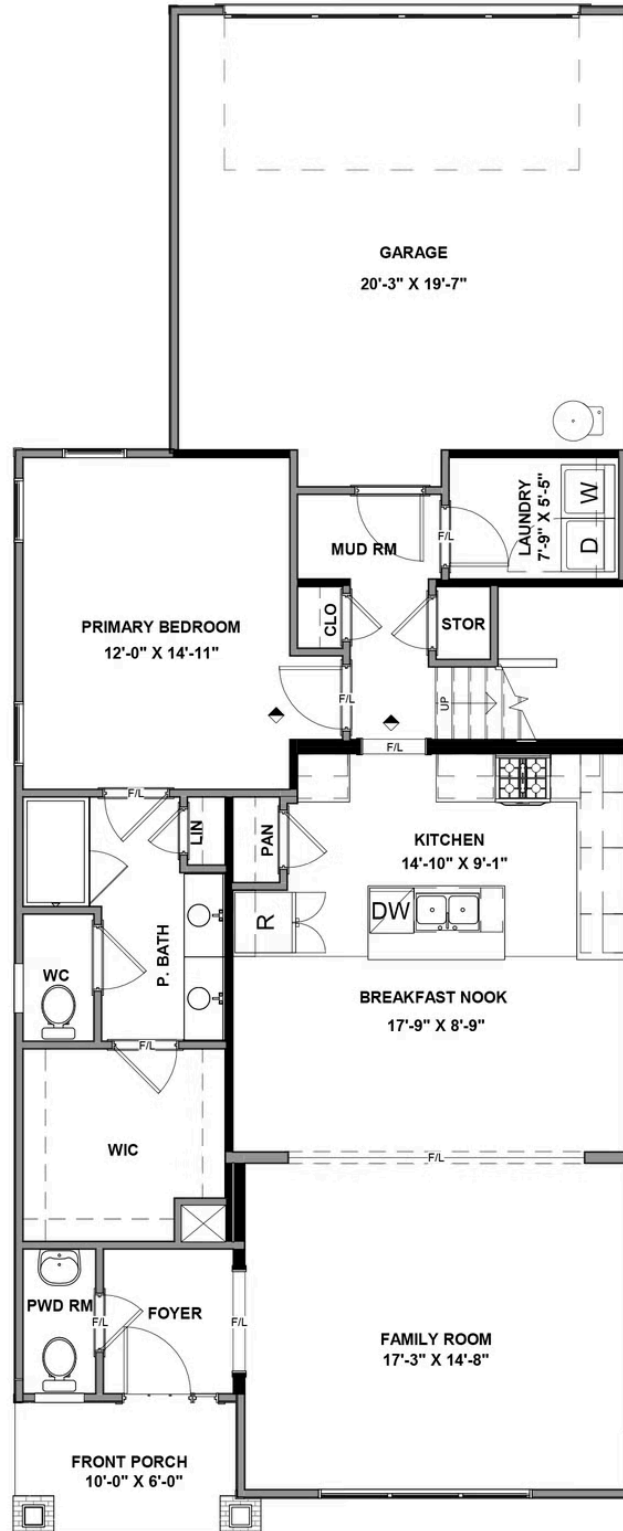
THE Manchester Townhome

AT READERS BRANCH TOWNHOMES



eagle

FIRST FLOOR



eagleofva.com

SECOND FLOOR

