

 3 Bedrooms

 2.5 Bathrooms

 2117 Square Feet

 2 Car Garage

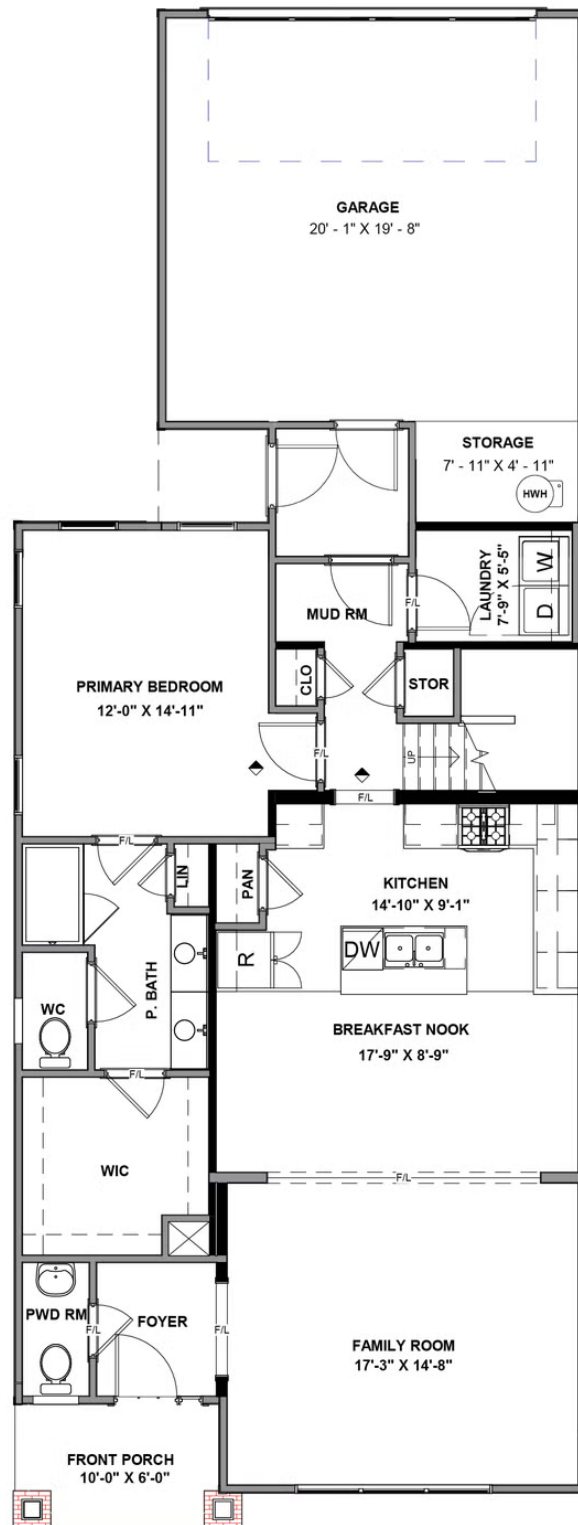
\$585,031

As timeless as it is contemporary, the Manchester Townhome is a 2-story plan with 3 bedrooms, 2.5 baths, and over 2,100 square feet of head-turning curb appeal. Step inside the foyer and be swept away by free-flowing spaciousness that whisks you effortlessly from family room to breakfast nook and on into a beautiful kitchen ready for cooking up memories. The first floor primary suite with expansive bath and walk-in closet leaves nothing to spare. Upstairs offers a loft area, two additional bedrooms, a full bath, and ample opportunities to personalize.

Features of this Home

- Rear Extension
- Gas Fireplace in Family Room
- Gas Cooking
- Hardwood Stairs

FIRST FLOOR



SECOND FLOOR

