





12635 Branch Parke Drive

AT READERS BRANCH TOWNHOMES



eagle

-  3 Bedrooms
-  2.5 Bathrooms
-  2411 Square Feet
-  2 Car Garage

\$629,297



As timeless as it is contemporary, the Manchester Townhome is a 2-story plan with 3 bedrooms, 2.5 baths, and over 2,400 square feet of head-turning curb appeal. Step inside the foyer and be swept away by free-flowing spaciousness that whisks you effortlessly from family room to breakfast nook and on into a beautiful kitchen ready for cooking up memories. The first floor primary suite with expansive bath and walk-in closet leaves nothing to spare. Upstairs offers a loft area, two additional bedrooms, a full bath, and ample opportunities to personalize.

Features of this Home

- Fireplace
- Outdoor Courtyard
- Hardwood Stairs
- Gas Cooking
- Additional Storage Area

eagleofva.com

12635 Branch Parke Drive

AT READERS BRANCH TOWNHOMES



eagle

FIRST FLOOR



eagleofva.com

This information is deemed reliable but not guaranteed. All details, dimensions, square footage, illustrations and pricing are approximate and may vary from actual plans and specifications. Contact an Eagle Sales Consultant for details. Current information as of 1st July 2025

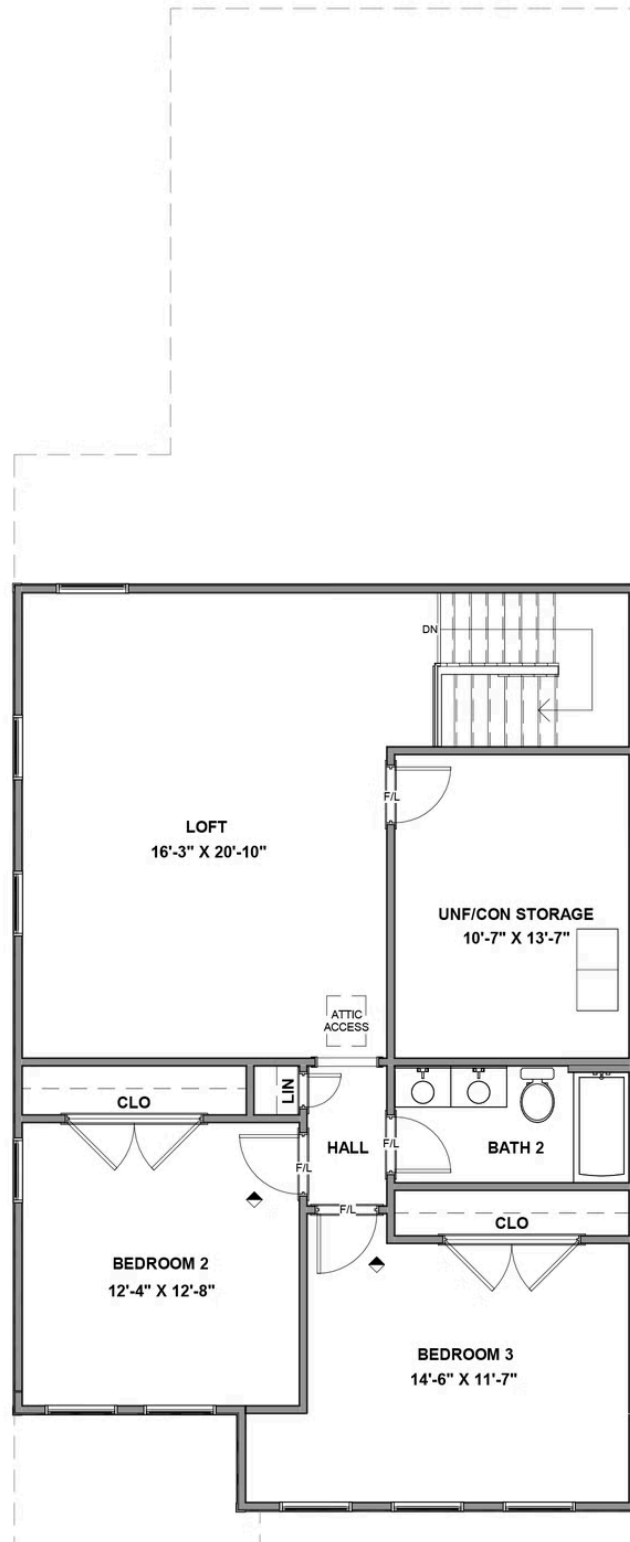
12635 Branch Parke Drive

AT READERS BRANCH TOWNHOMES



eagle

SECOND FLOOR



eagleofva.com

This information is deemed reliable but not guaranteed. All details, dimensions, square footage, illustrations and pricing are approximate and may vary from actual plans and specifications. Contact an Eagle Sales Consultant for details. Current information as of 1st July 2025