





12633 Branch Parke Drive

AT READERS BRANCH TOWNHOMES



eagle

-  3 Bedrooms
-  2.5 Bathrooms
-  2293 Square Feet
-  2 Car Garage

\$629,773



As timeless as it is contemporary, the Manchester Townhome is a 2-story plan with 3 bedrooms, 2.5 baths, and over 2,200 square feet of head-turning curb appeal. Step inside the foyer and be swept away by free-flowing spaciousness that whisks you effortlessly from family room to breakfast nook and on into a beautiful kitchen ready for cooking up memories. The first floor primary suite with expansive bath and walk-in closet leaves nothing to spare. Upstairs offers a loft area, two additional bedrooms, a full bath, and ample opportunities to personalize.

Features of this Home

- Fireplace
- Rear Extension
- Hardwood Stairs
- Gas Cooking

eagleofva.com

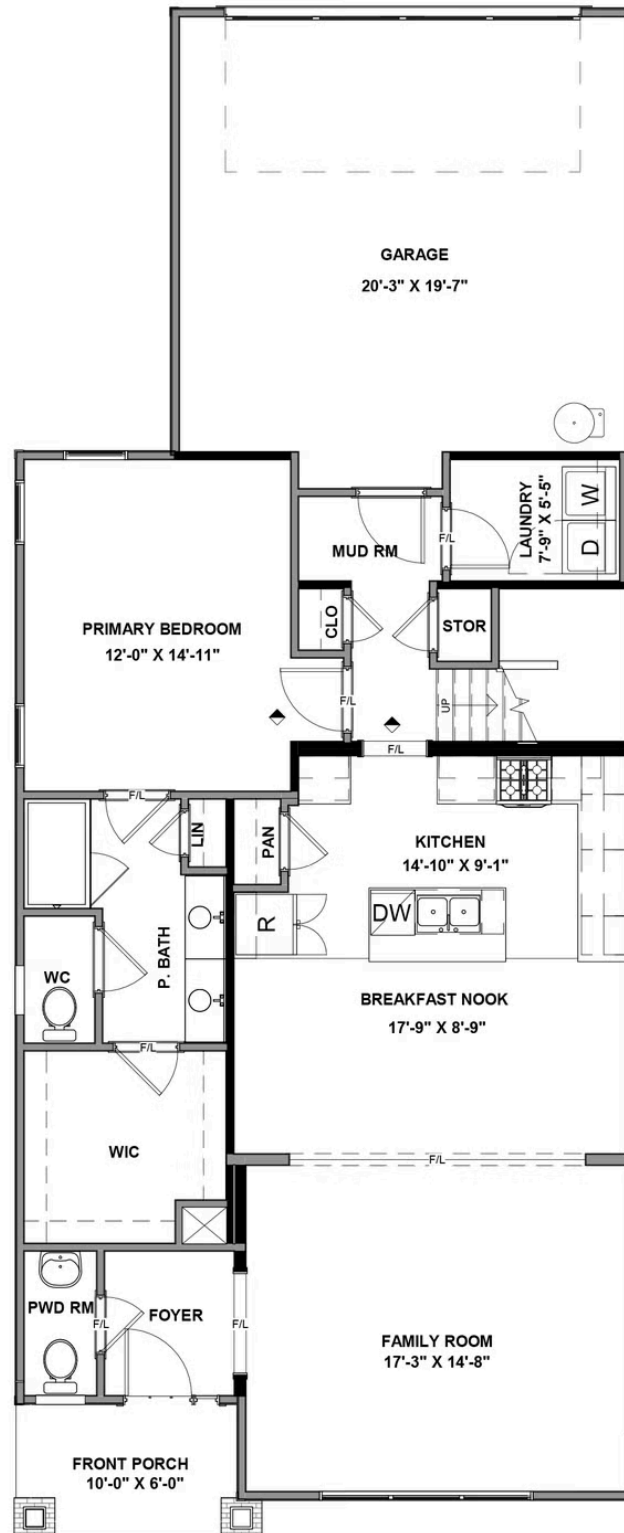
12633 Branch Parke Drive

AT READERS BRANCH TOWNHOMES



eagle

FIRST FLOOR



eagleofva.com

This information is deemed reliable but not guaranteed. All details, dimensions, square footage, illustrations and pricing are approximate and may vary from actual plans and specifications. Contact an Eagle Sales Consultant for details. Current information as of 18th August 2025

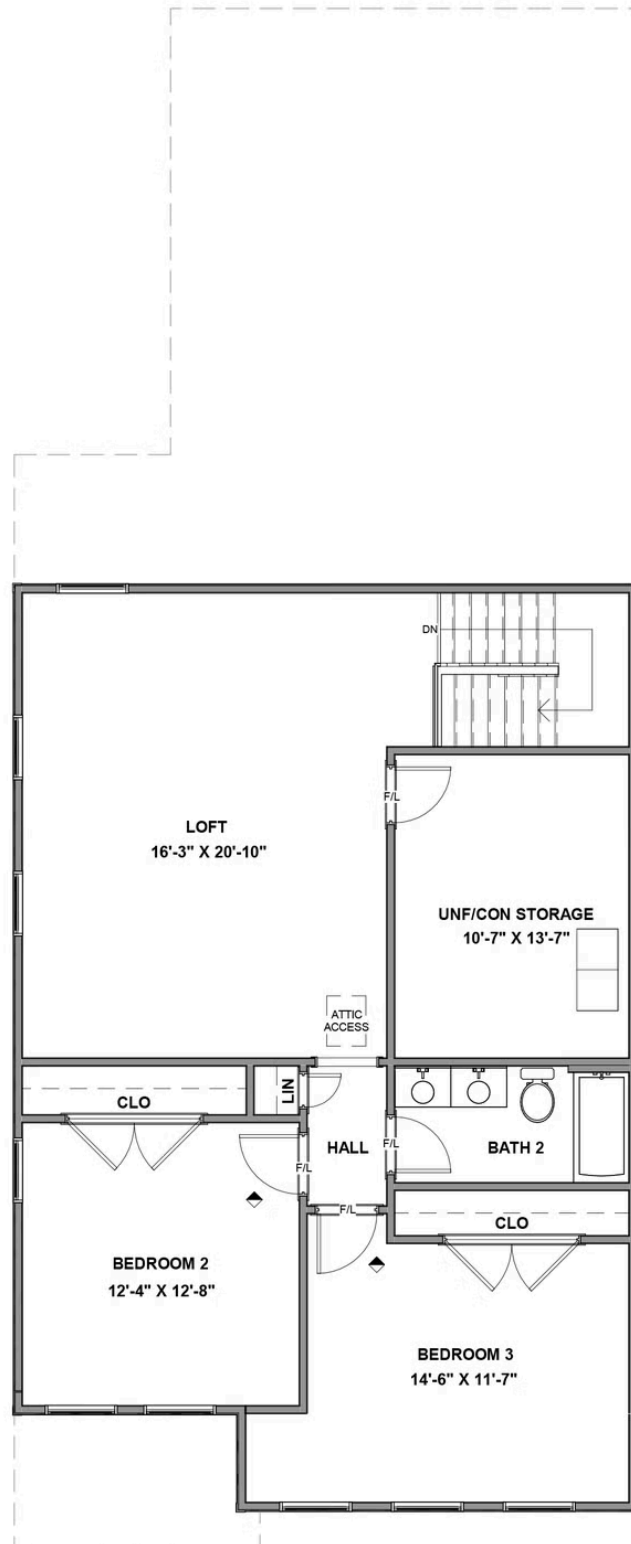
12633 Branch Parke Drive

AT READERS BRANCH TOWNHOMES



eagle

SECOND FLOOR



eagleofva.com

This information is deemed reliable but not guaranteed. All details, dimensions, square footage, illustrations and pricing are approximate and may vary from actual plans and specifications. Contact an Eagle Sales Consultant for details. Current information as of 18th August 2025