






THE Linden III

AT READERS BRANCH SINGLE FAMILY HOMES



-  3 Bedrooms
-  2.5 Bathrooms
-  2,677 Square Feet
-  2 Car Garage
-  2 Levels



A modern classic with ageless appeal, the Linden III is a 2-story plan offering 3 bedrooms, 2.5 baths, a 2-car garage, and over 2,600 square feet of spaciousness ready for your personal touch. The aroma and allure of home cooking draws you in to an expansive kitchen and island overlooking the open breakfast nook and family room, complete with a back deck perfect for chilling and grilling. Tucked down the hallway and past the study, the first floor primary suite offers a secluded escape with a dual-sink bathroom oasis and cavernous walk-in closet. At the front of the house, a formal dining room is ready to host guests and gatherings alike, while a central laundry promises good clean living. Upstairs offers an open loft landing, two bedrooms, a full bath, and ample additional storage.

Features of this Floorplan

- First floor primary bedroom
- Study
- Butler's pantry
- Formal dining room
- Multiple primary bath configurations
- Option for screened porch or lanai
- Option for media room on second floor
- Option for Florida room

eagleofva.com

THE Linden III

AT READERS BRANCH SINGLE FAMILY HOMES



Traditional



Craftsman



Folk Victorian

eagleofva.com

This information is deemed reliable but not guaranteed. All details, dimensions, square footage, illustrations and pricing are approximate and may vary from actual plans and specifications. Contact an Eagle Sales Consultant for details. Current information as of 12th December 2025

THE Linden III

AT READERS BRANCH SINGLE FAMILY HOMES



FIRST FLOOR



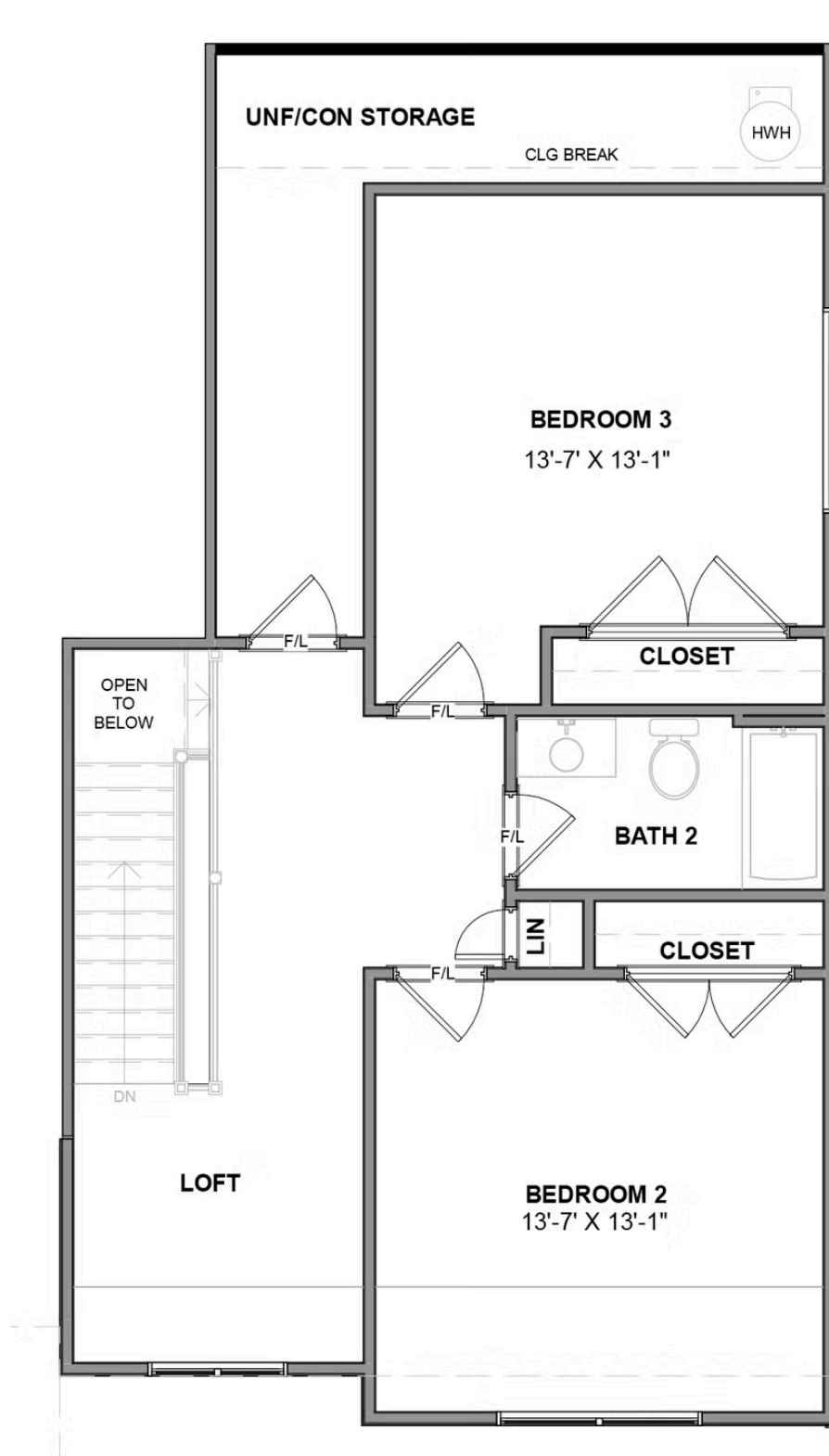
eagleofva.com

THE Linden III

AT READERS BRANCH SINGLE FAMILY HOMES



SECOND FLOOR



eagleofva.com