






# THE Hadley

## AT READERS BRANCH SINGLE FAMILY HOMES



-  2 Bedrooms
-  2.5 Bathrooms
-  2,053 Square Feet
-  2 Car Garage
-  1 Levels



More than a home, the Hadley is your personal haven of spaciousness with 2+ bedrooms, 2.5+ baths, a 2-car garage, and over 1,900 square feet. From everyday meals to holiday feasts, be the star of every gathering in a chef-inspired kitchen overlooking the breakfast nook and family room, and continuing to a back deck that invites the good times outside. Down the hallway you'll find the primary suite with dual-sink bath and walk-in closet, as well as a second bedroom with its own private bath. An entry foyer, central laundry, and half bath complete the space, along with a formal dining room that can be converted to a third bedroom if desired.

### Features of this Floorplan

- One level living
- Formal dining room
- Multiple primary bath configurations
- Option for screened porch or lanai
- Option for Florida room

[eagleofva.com](http://eagleofva.com)

# THE Hadley

AT READERS BRANCH SINGLE FAMILY HOMES



**Traditional**



**Folk Victorian**



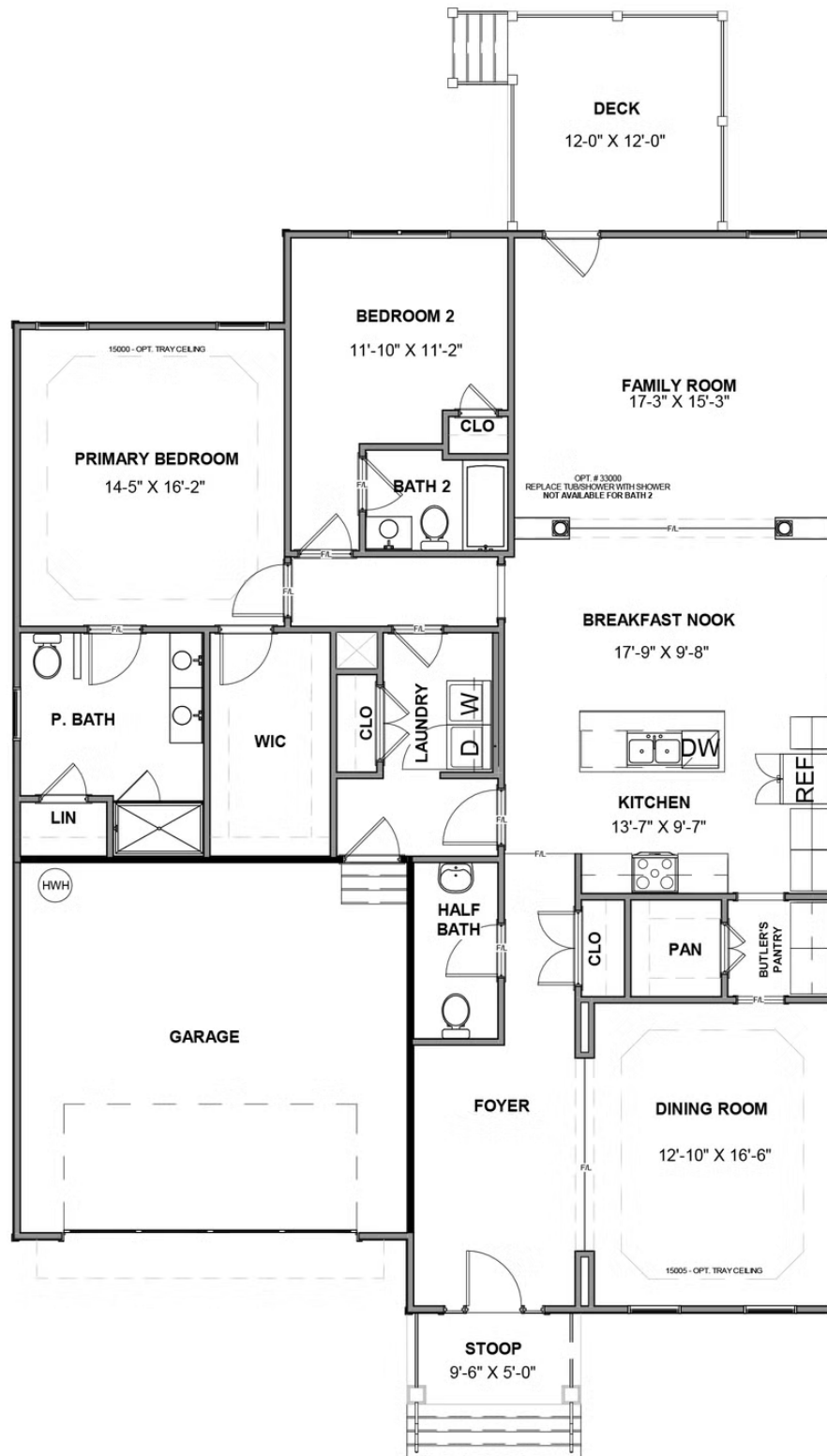
**Craftsman**

[eagleofva.com](http://eagleofva.com)

This information is deemed reliable but not guaranteed. All details, dimensions, square footage, illustrations and pricing are approximate and may vary from actual plans and specifications. Contact an Eagle Sales Consultant for details. Current information as of 28th April 2024

# THE Hadley

AT READERS BRANCH SINGLE FAMILY HOMES



eagleofva.com