






THE **Fulton**

AT READERS BRANCH SINGLE FAMILY HOMES



-  3 - 4 Bedrooms
-  3 Bathrooms
-  2,881 Square Feet
-  2 Car Garage
-  2 Levels



Live in the “wow” with the Fulton, a sweeping 2-story plan with 2-car garage, 3 bedrooms, and all the space you could dream of. Featuring over 2,800 square feet of easygoing style, you'll never miss a beat in the expansive open-flow kitchen, family room, breakfast area, and den. Personalization opportunities abound throughout, from an optional dining room and 'twilight fireplace,' to the first floor primary suite with its sumptuous walk-in closet and dual-sink bath. A front bedroom and full bath sit just off the foyer, while a convenient mud room and laundry are ready for life's messy moments. On the second floor, a third bedroom, full bath, and flexible loft space await, with options for a fourth bedroom or additional storage.

Features of this Floorplan

- First floor primary bedroom
- Primary bedroom connects to laundry room
- Den
- Multiple primary bath configurations
- Option for formal dining room
- Option for extended patio
- Option for screened porch
- Second floor loft and bedroom with option to add additional bedroom and/or unfinished storage

eagleofva.com

THE **Fulton**

AT READERS BRANCH SINGLE FAMILY HOMES



Arts & Crafts



Colonial



Folk Victorian

eagleofva.com

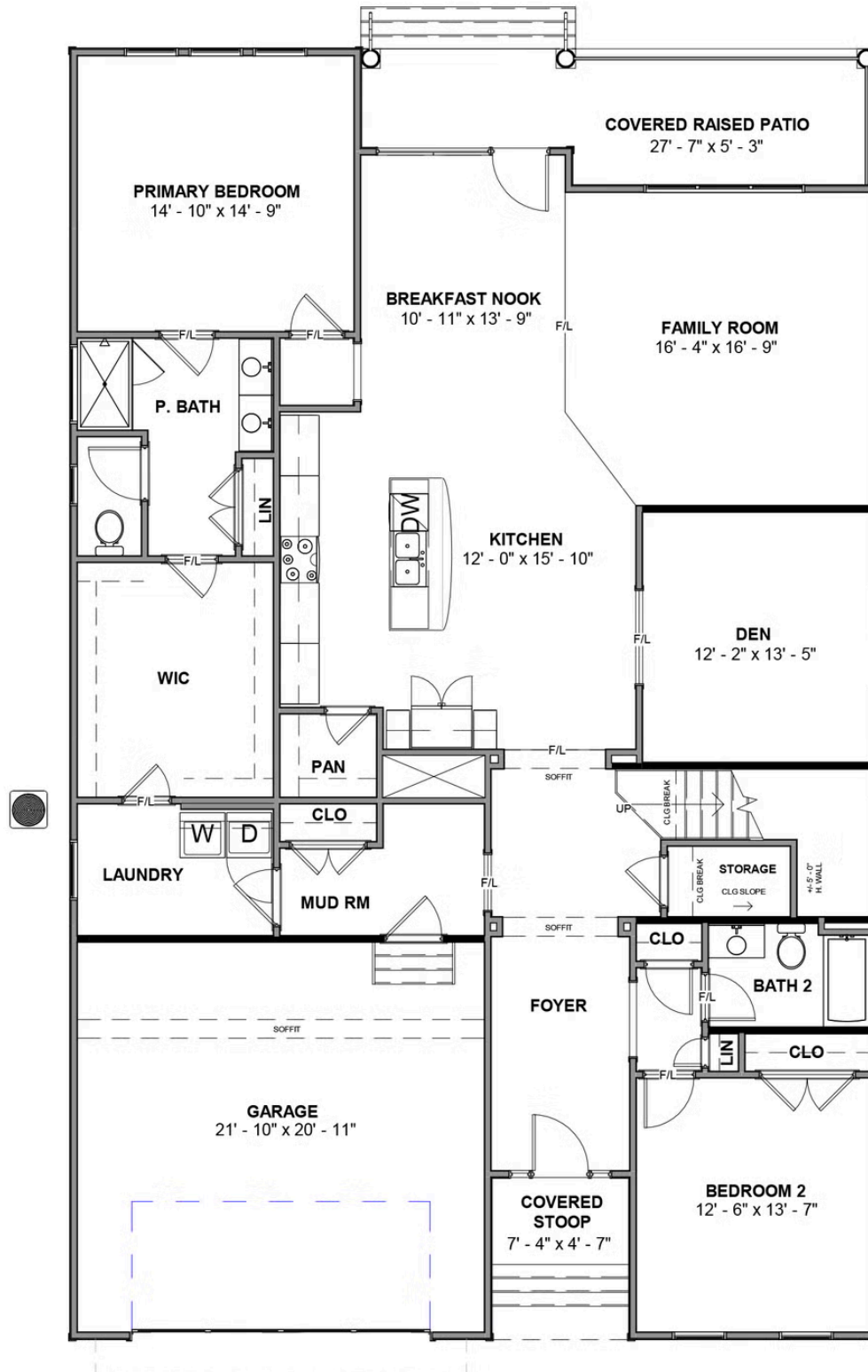
This information is deemed reliable but not guaranteed. All details, dimensions, square footage, illustrations and pricing are approximate and may vary from actual plans and specifications. Contact an Eagle Sales Consultant for details. Current information as of 3rd July 2025

THE **Fulton**

AT READERS BRANCH SINGLE FAMILY HOMES



FIRST FLOOR



eagleofva.com

SECOND FLOOR

