






THE **Fulton Terrace**

AT READERS BRANCH SINGLE FAMILY HOMES



-  3 Bedrooms
-  3 Bathrooms
-  3,095 Square Feet
-  2 Car Garage
-  2 Levels



The Fulton Terrace takes living big to epic proportions with a 2-story plan packing 3 bedrooms, 3 full baths, a 2-car garage, and over 3,000 square feet. Through the foyer and past the grand staircase lives your every desire, from lavish dinner parties to quiet game-night gatherings. A gourmet kitchen, family room, and breakfast area with covered patio access merge into an ocean of open space—with an additional den perfect for a home office or formal dining room. A first floor primary suite offers a luxurious dual-sink bath and generous walk-in closet, with an additional bedroom and full bath at the front of the house. And we're just getting stated! Head down to the terrace level where a third bedroom, full bath, and a rec area with backyard access awaits—along with two massive storage areas ready for your imagination.

Features of this Floorplan

- Main level primary bedroom
- Primary bedroom connects to laundry room
- Den
- Terrace level features rec area and additional bedroom
- Huge amount of unfinished/conditioned storage
- Multiple primary bath configurations
- Option for screened porch
- Option for formal dining room

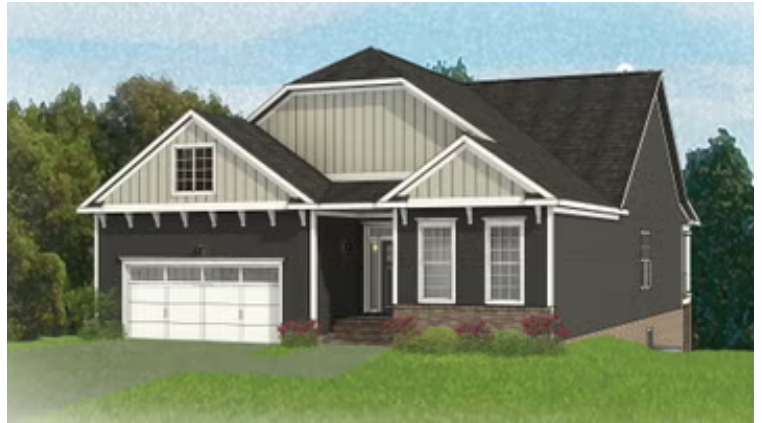
eagleofva.com

THE **Fulton Terrace**

AT READERS BRANCH SINGLE FAMILY HOMES



Arts & Crafts



Colonial



Folk Victorian

eagleofva.com

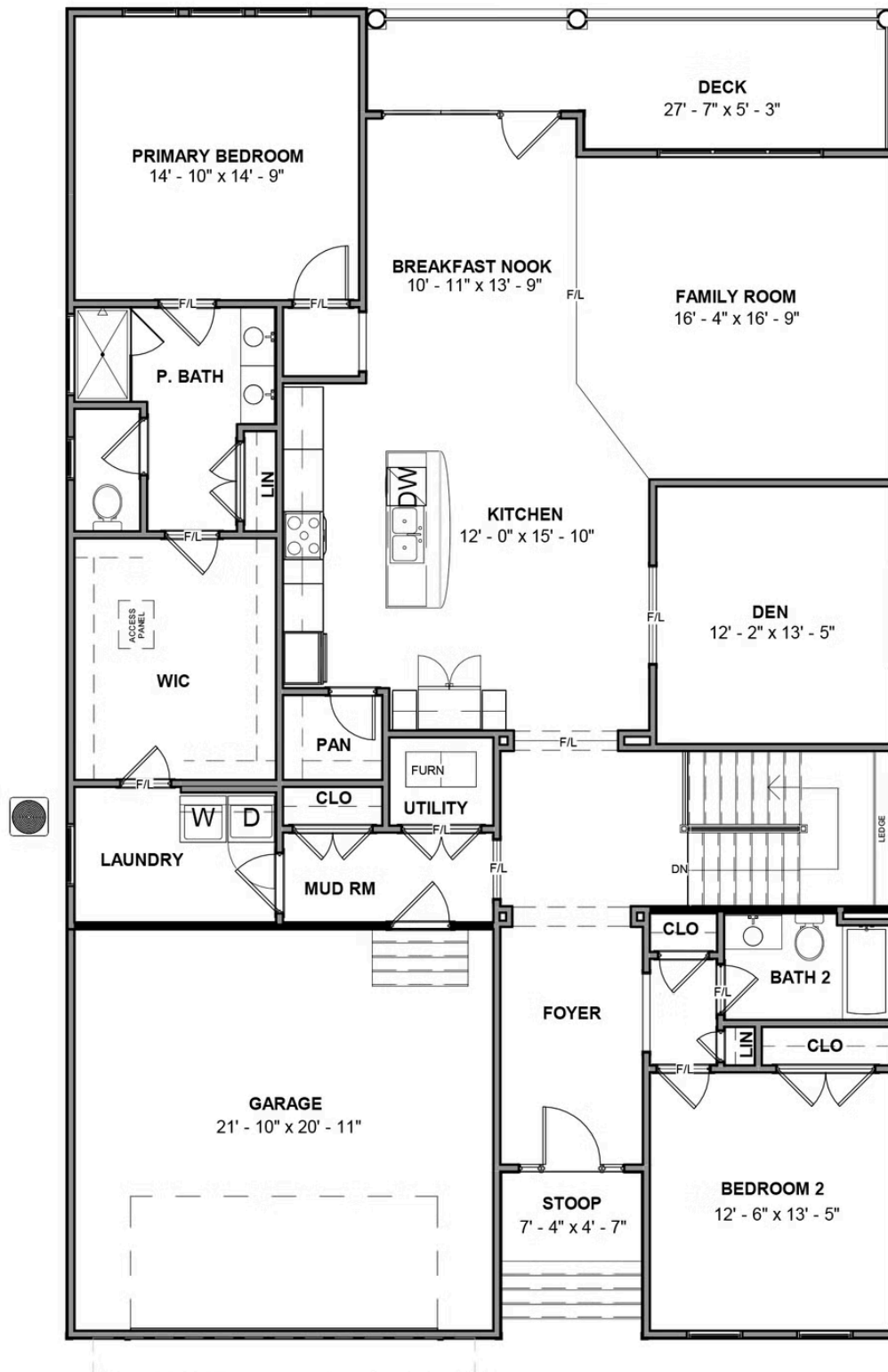
This information is deemed reliable but not guaranteed. All details, dimensions, square footage, illustrations and pricing are approximate and may vary from actual plans and specifications. Contact an Eagle Sales Consultant for details. Current information as of 3rd July 2025

THE **Fulton Terrace**

AT READERS BRANCH SINGLE FAMILY HOMES



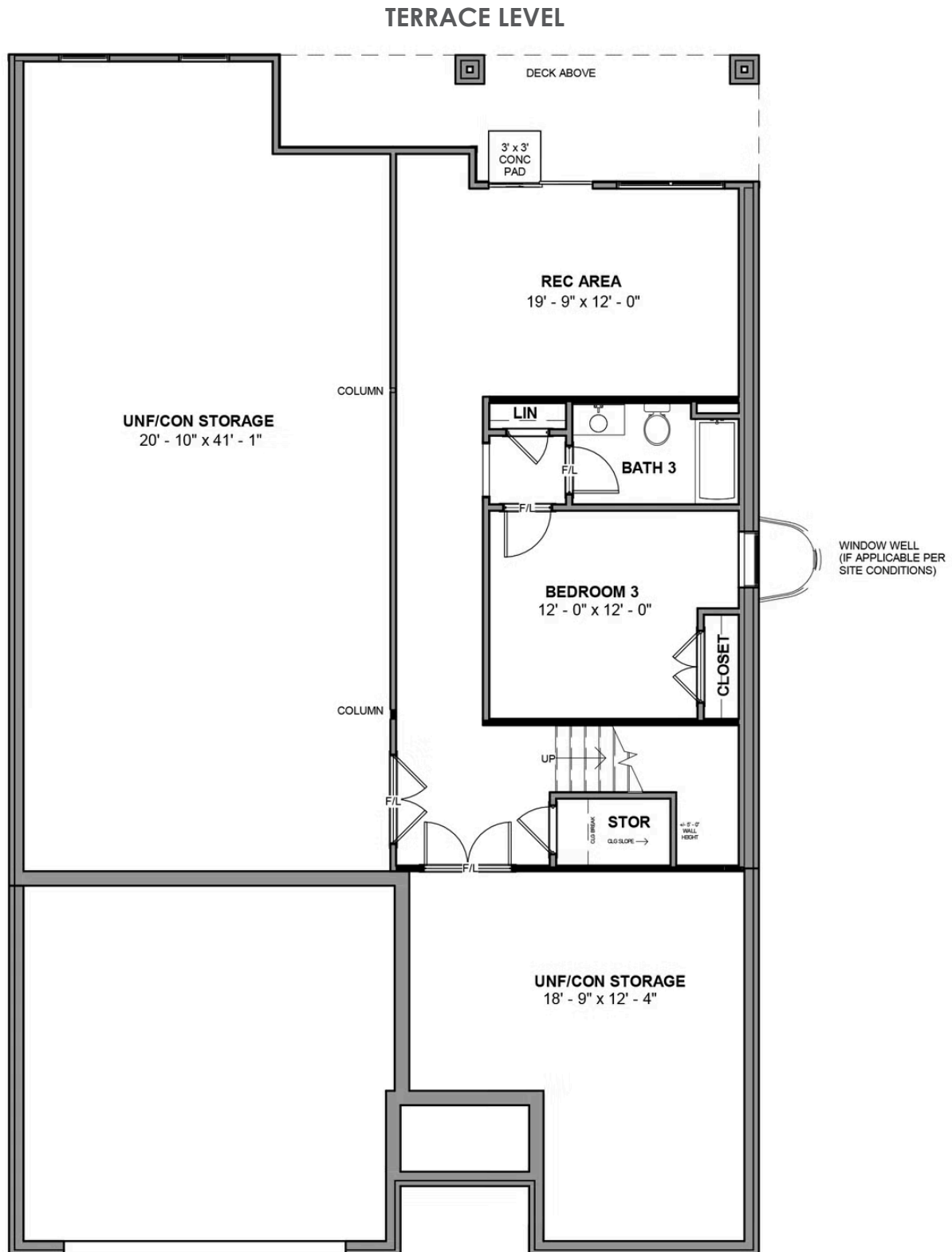
MAIN LEVEL



eagleofva.com

THE **Fulton Terrace**

AT READERS BRANCH SINGLE FAMILY HOMES



eagleofva.com