





12638 Branch Parke Drive

AT READERS BRANCH SINGLE FAMILY HOMES



-  3 Bedrooms
-  3.0 Bathrooms
-  3509 Square Feet
-  2 Car Garage

\$889,900



The Fulton Terrace takes living big to epic proportions with a 2-story plan packing 3 bedrooms, 3 full baths, a 2-car garage, and over 3,500 square feet. Through the foyer and past the grand staircase lives your every desire, from lavish dinner parties to quiet game-night gatherings. A gourmet kitchen, family room, and breakfast area with covered patio access merge into an ocean of open space—with an additional den perfect for a home office or formal dining room. A first floor primary suite offers a luxurious dual-sink bath and generous walk-in closet, with an additional bedroom and full bath at the front of the house. And we're just getting stated! Head down to the terrace level where a third bedroom, full bath, and a rec area with backyard access awaits—along with two massive storage areas ready for your imagination.

Features of this Home

- Expanded Rec Room in Basement
- Serenity Primary Bath
- Gas Fireplace in Family Room
- Under Cabinet LED Lighting in Kitchen
- Quartz Countertops
- Upgraded Composite Deck

eagleofva.com

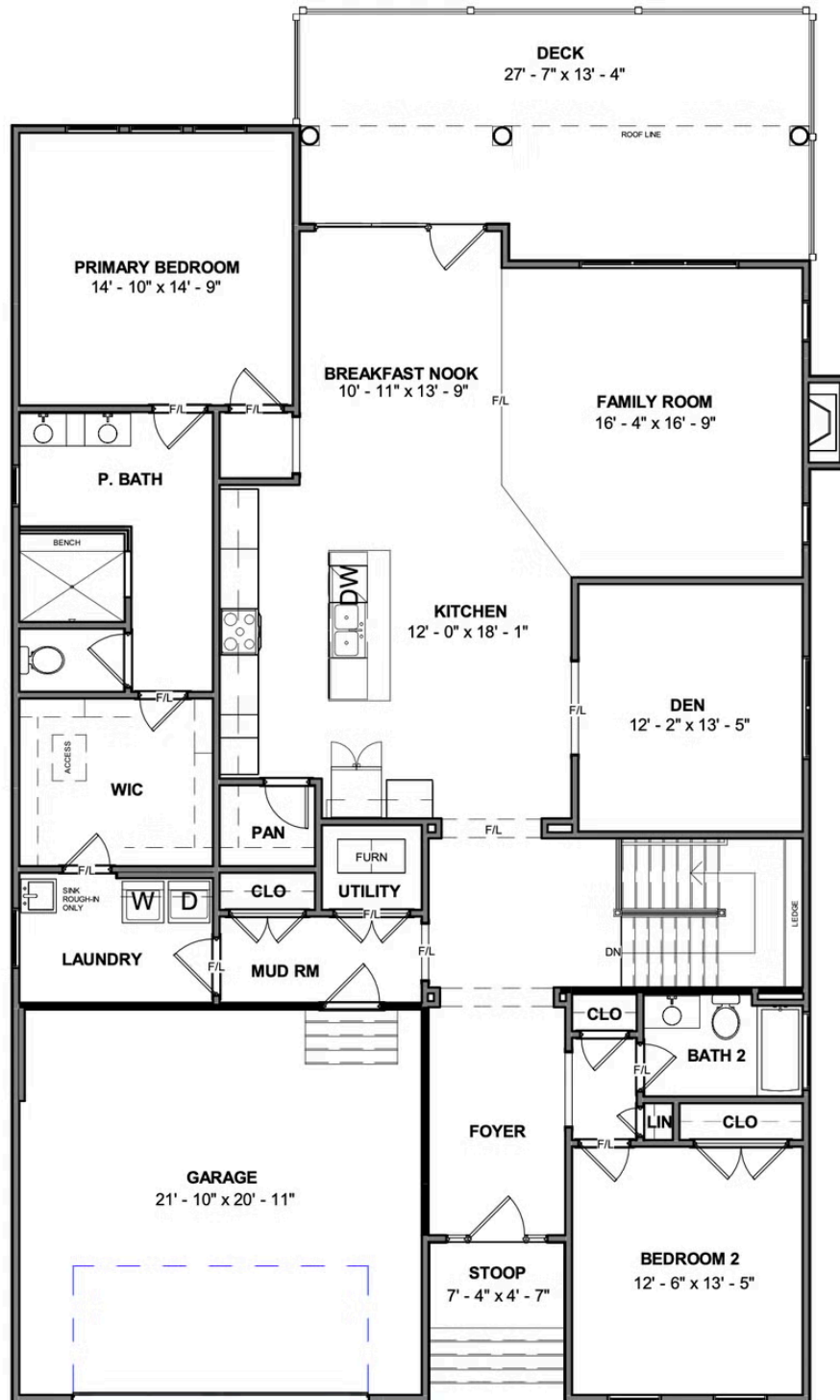
12638 Branch Parke Drive

AT READERS BRANCH SINGLE FAMILY HOMES



eagle

MAIN LEVEL



eagleofva.com

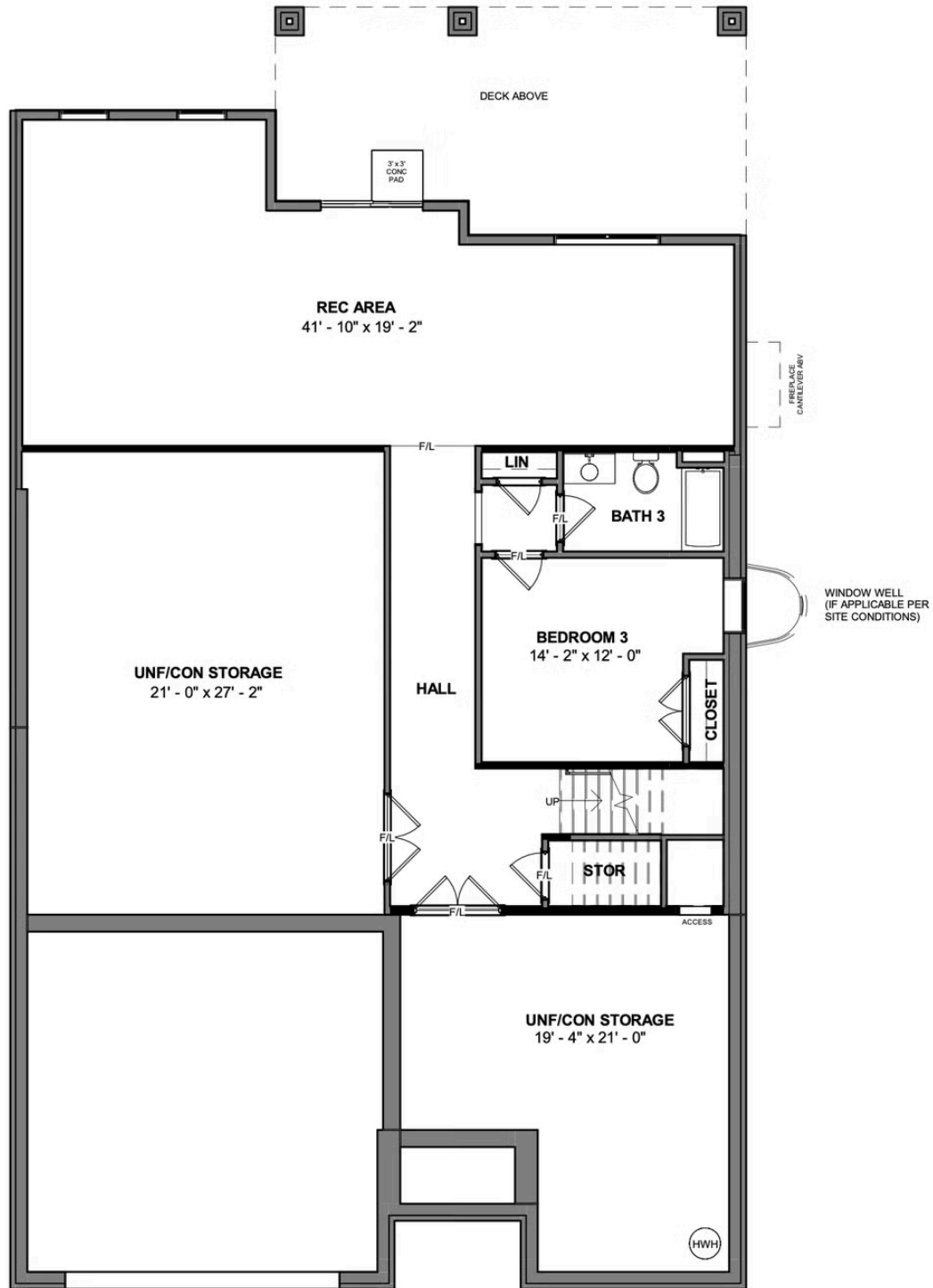
12638 Branch Parke Drive

AT READERS BRANCH SINGLE FAMILY HOMES



eagle

TERRACE LEVEL



eagleofva.com

This information is deemed reliable but not guaranteed. All details, dimensions, square footage, illustrations and pricing are approximate and may vary from actual plans and specifications. Contact an Eagle Sales Consultant for details. Current information as of 1st January 2026