





# 12423 Leith Hill Circle

AT READERS BRANCH SINGLE FAMILY HOMES



-  3 Bedrooms
-  2.5 Bathrooms
-  2677 Square Feet
-  2 Car Garage

**\$729,990**



A modern classic with ageless appeal, the Linden III is a 2-story plan offering 3 bedrooms, 2.5 baths, a 2-car garage, and over 2,600 square feet of spaciousness ready for your personal touch. The aroma and allure of home cooking draws you in to an expansive kitchen and island overlooking the open breakfast nook and family room with fireplace. A 2 foot bumpout has been added to the kitchen for even more room to spread out, and a screened porch has been tucked off the family room for another relaxing spot to retreat to. Tucked down the hallway and past the study, the first floor primary suite offers a secluded escape with a Serenity primary bath and spacious walk-in closet. At the front of the house, a formal dining room is ready to host guests and gatherings alike, while a central laundry promises good clean living. Upstairs offers an open loft landing, two bedrooms, a full bath, and ample additional storage.

## Features of this Home

- Screened porch
- Expanded kitchen and breakfast area
- Serenity primary bathroom
- Kitchen features 42" cabinets, luxury quartz countertops, and GE gas convection range
- Revwood plus laminate flooring

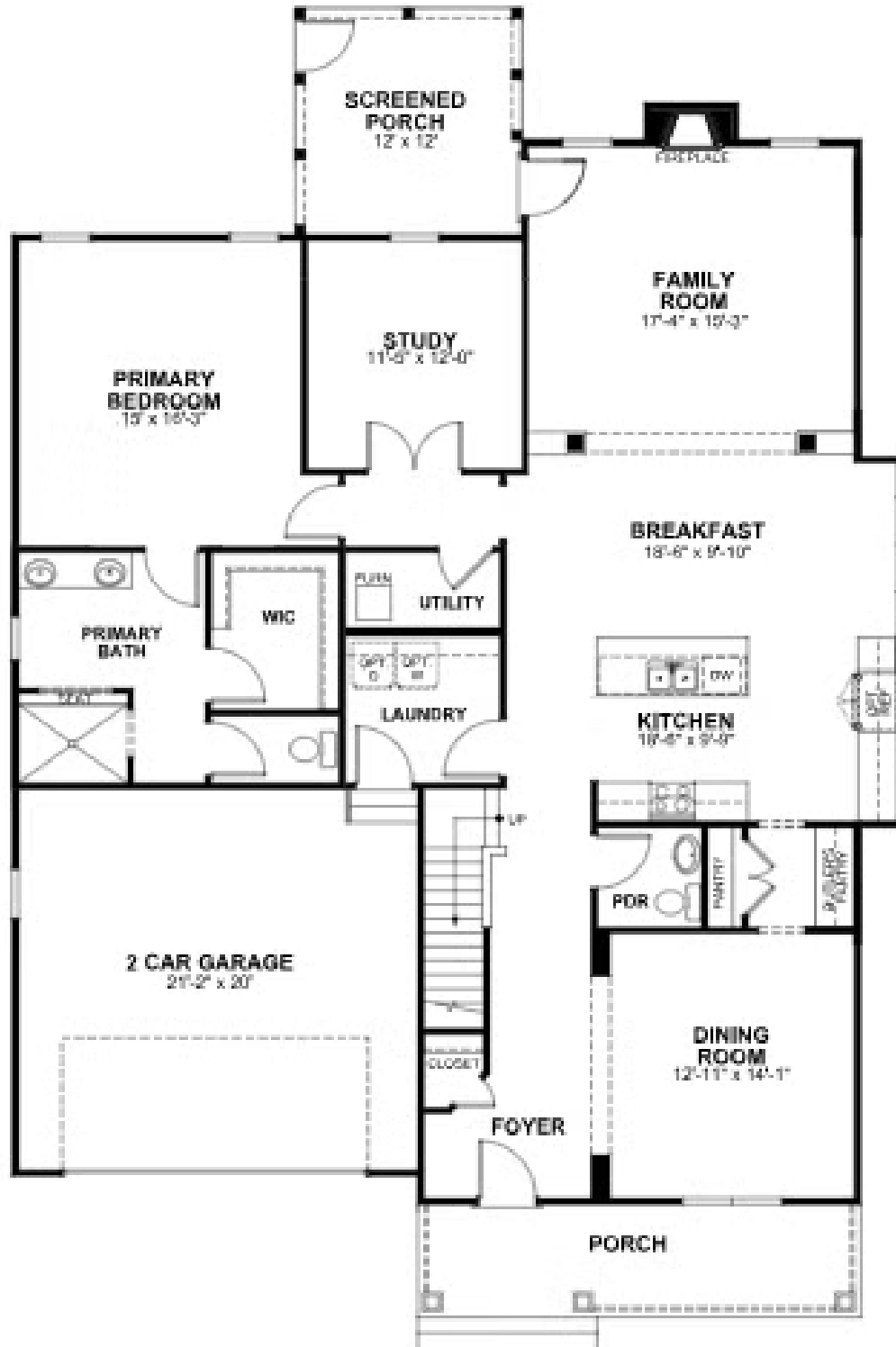
[eagleofva.com](http://eagleofva.com)

# 12423 Leith Hill Circle

AT READERS BRANCH SINGLE FAMILY HOMES



## FIRST FLOOR



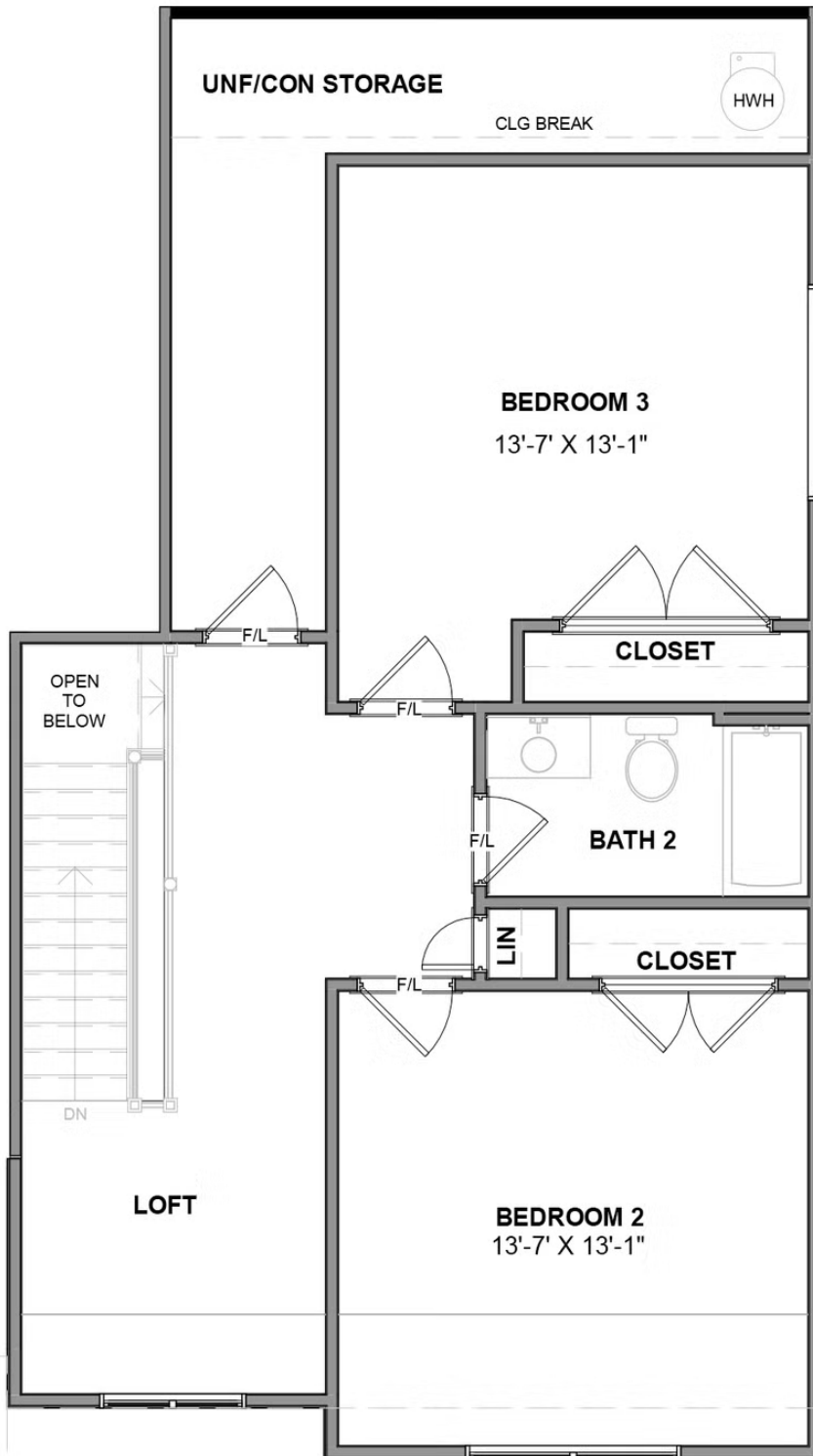
[eagleofva.com](http://eagleofva.com)

# 12423 Leith Hill Circle

AT READERS BRANCH SINGLE FAMILY HOMES



## SECOND FLOOR



eagleofva.com