





1736 New Settlement Dr

AT SETTLER'S RIDGE



-  3 Bedrooms
-  2.0 Bathrooms
-  1 688 Square Feet
-  2 Car Garage

\$429,851



One level living at its finest in the Magnolia floor plan! Enjoy over 1,600 square feet of living space with 3 bedrooms, 2 full baths, and a 2-car garage with a small additional storage area tucked in the back. Head on into your foyer and straight on through to your kitchen with large walk-in corner pantry and spacious island overlooking the dining room and family room. If you want to enjoy the amazing sunrise or sunset then step on out to your lanai, the perfect outdoor space to get some fresh air. The first floor primary bedroom is tucked away and features a dual-sink primary bath and large walk-in closet. Two additional bedrooms and full bath are located at the front of the home.

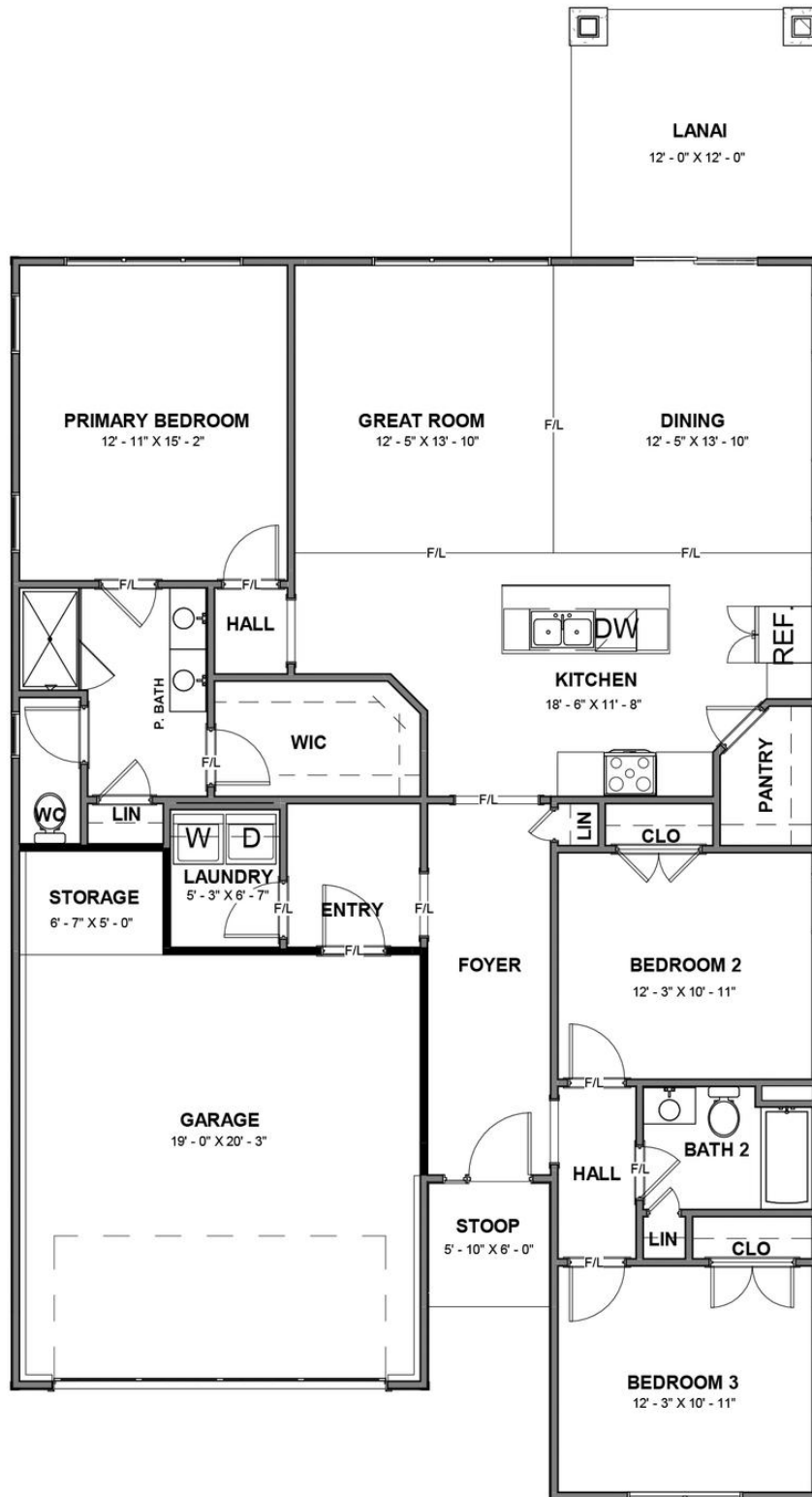
Features of this Home

- One level living
- Covered front porch
- Spacious screened porch
- Gas fireplace in family room
- Ceramic tile shower in primary bath
- High definition video package
- Tons of natural lighting
- Added recessed lighting

eagleofva.com

1736 New Settlement Dr

AT SETTLER'S RIDGE



eagleofva.com