





1808 New Settlement Drive

AT SETTLER'S RIDGE



-  3 Bedrooms
-  3.0 Bathrooms
-  2006 Square Feet
-  2 Car Garage

\$499,900



MOVE-IN READY! Meet the Azalea, a brand new floor plan featuring over 2,000 sf of living space with 3 bedrooms, 3 baths, and a 2-car garage with additional storage area. Step through the foyer into your kitchen complete with walk-in corner pantry. The kitchen flows seamlessly to the dining room and right on through to the family room. Looking to enjoy your morning coffee or sip on your afternoon sweet tea? Head no farther than your lanai situated right off the family room! The primary bedroom is located on the first floor with spacious walk-in closet and Serenity primary bath with bench seat in shower. A second main level bedroom and full bath can be found just off the foyer. The second floor is perfect for guests or additional entertainment space with a large loft, additional bedroom, and full bath.

Features of this Home

- Backs up to trees
- First Floor Primary Bedroom
- Serenity primary bath with bench seat
- Stainless Steel Gas Range, Microwave and Dishwasher
- Covered Lanai
- Third Bedroom and Full Bath on Second Floor
- Additional storage area
- HD Video Package

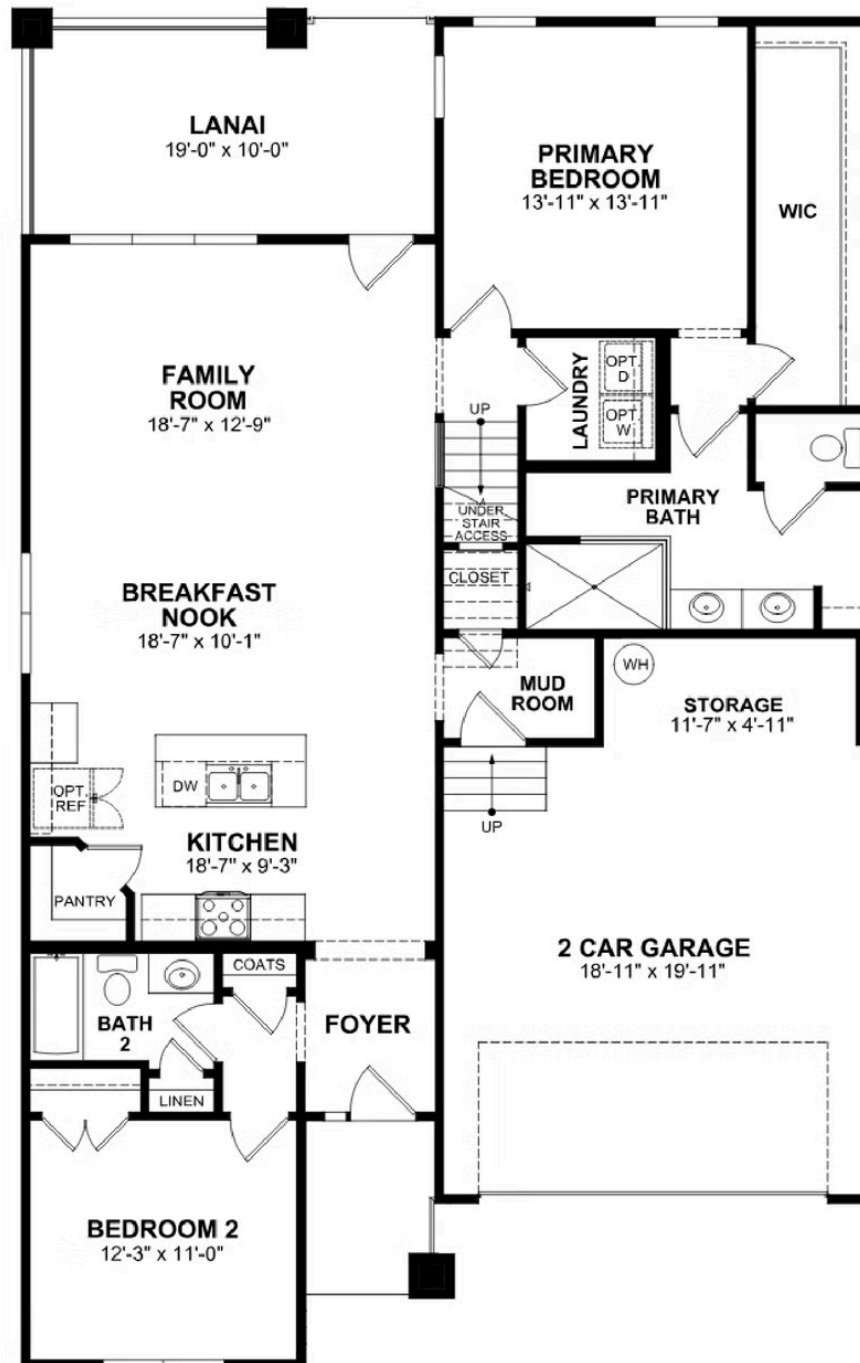
eagleofva.com

1808 New Settlement Drive

AT SETTLER'S RIDGE



FIRST FLOOR



eagleofva.com

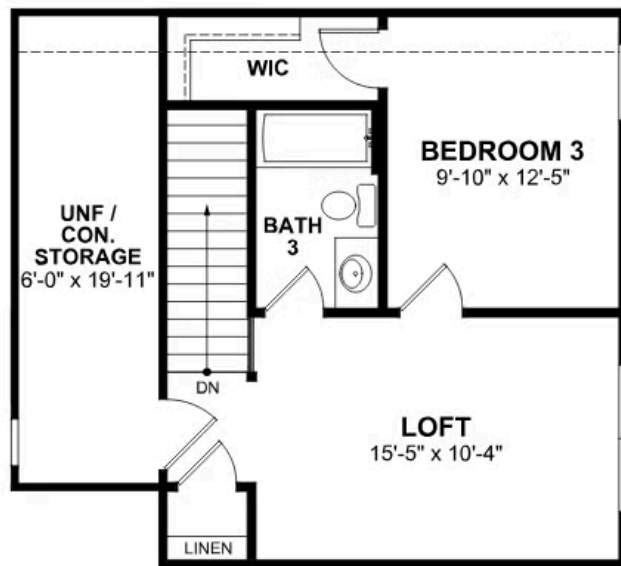
This information is deemed reliable but not guaranteed. All details, dimensions, square footage, illustrations and pricing are approximate and may vary from actual plans and specifications. Contact an Eagle Sales Consultant for details. Current information as of 25th April 2025

1808 New Settlement Drive

AT SETTLER'S RIDGE



SECOND FLOOR



eagleofva.com

This information is deemed reliable but not guaranteed. All details, dimensions, square footage, illustrations and pricing are approximate and may vary from actual plans and specifications. Contact an Eagle Sales Consultant for details. Current information as of 25th April 2025