





# 361-B Souldren Walk #21B

AT GREENGATE



-  3 Bedrooms
-  2.5 Bathrooms
-  2487 Square Feet
-  1 Car Garage

**\$654,900**



This McKinney 2-level condo with personal elevator is the perfect fit for low maintenance living and all the amenities that abound in this community. This home has its own personal first floor foyer and one car garage with a driveway to park an additional car. The remainder of the home occupies the upper two levels of a four-story building, aesthetically fitting right in with our beautiful townhomes. This home has all hardwood stairs and elevator access to the third and fourth floors. All three bedrooms are located on the third floor with a spacious laundry room. Primary bedroom has a HUGE walk-in closet that is sure to impress! Primary has an en suite bath with quartz counters and tile throughout shower walls and floors. Further down the hallway is where the 2nd and 3rd bedrooms are, also perfect for a home office or home gym. Upstairs is the main living area with kitchen and upgraded quartz counters island, open dining room and enormous family room that leads out to the COVERED TERRACE with gas brick fireplace. With a side view of one of our sought after pocket parks, this homesite is one you don't want to miss.

## Features of this Home

- Personal elevator to all floors
- Spacious walk-in closet in primary bedroom
- Luxury quartz countertops throughout
- Covered terrace with brick fireplace

[eagleofva.com](http://eagleofva.com)

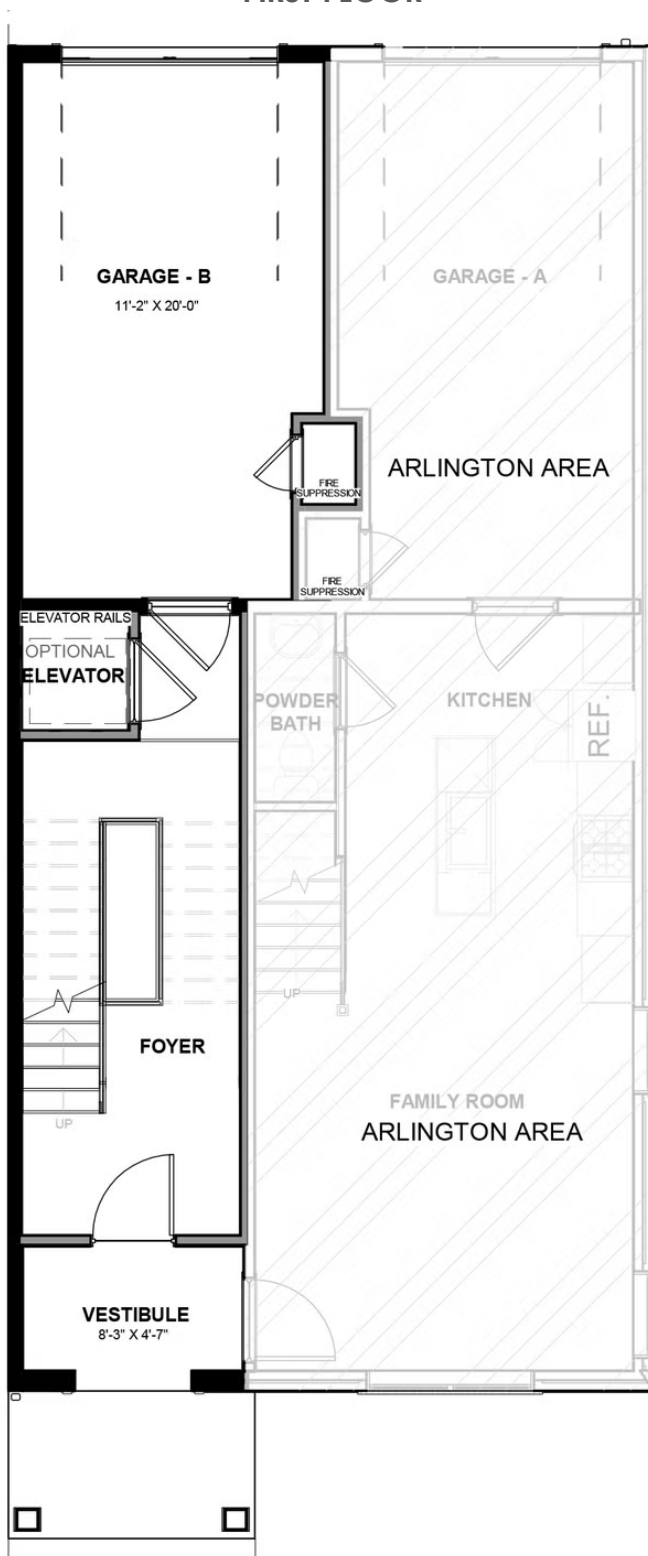
# 361-B Souldren Walk #21B

AT GREENGATE



# eagle

## FIRST FLOOR



[eagleofva.com](http://eagleofva.com)

This information is deemed reliable but not guaranteed. All details, dimensions, square footage, illustrations and pricing are approximate and may vary from actual plans and specifications. Contact an Eagle Sales Consultant for details. Current information as of 26th April 2024

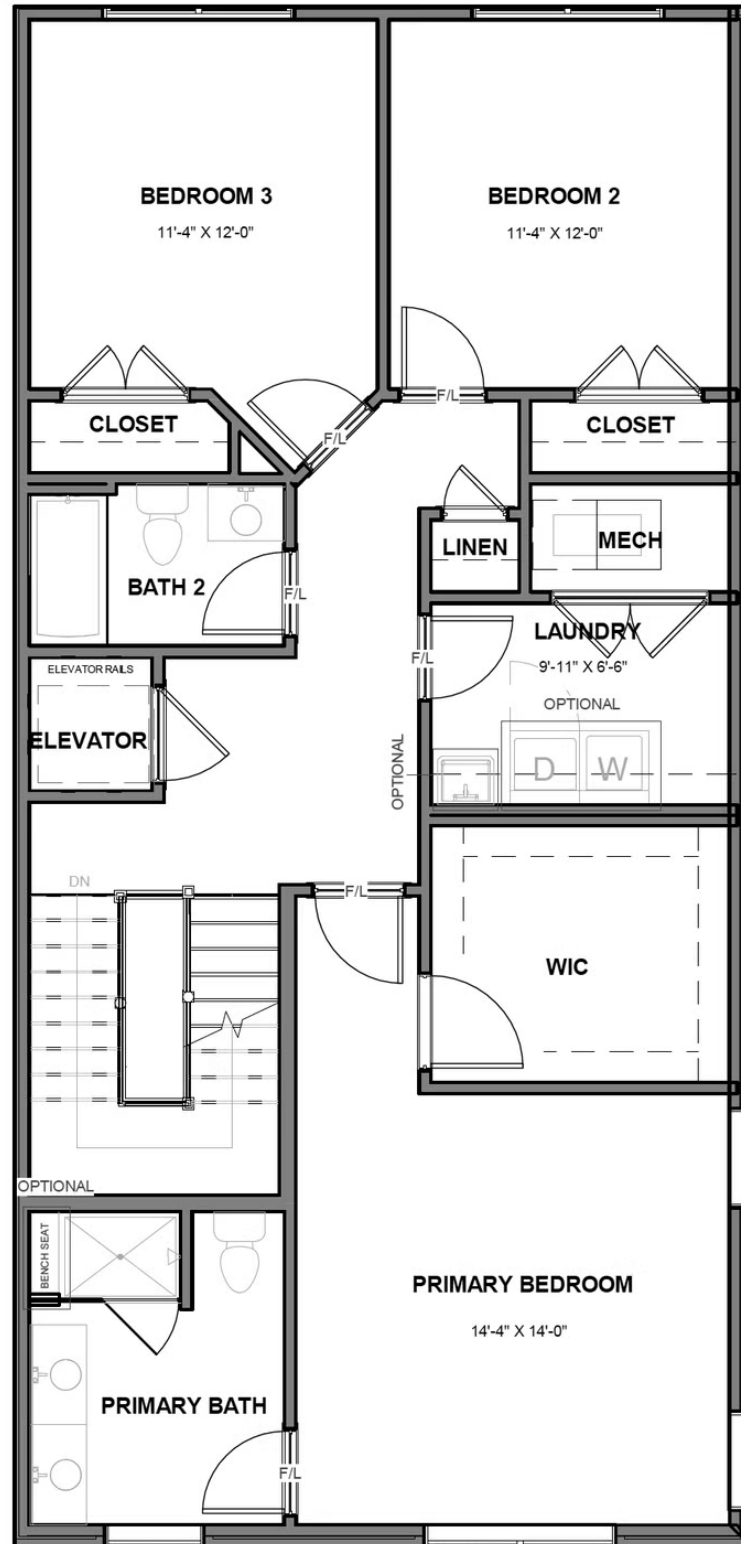
# 361-B Souldren Walk #21B

AT GREENGATE



# eagle

## THIRD FLOOR



eagleofva.com

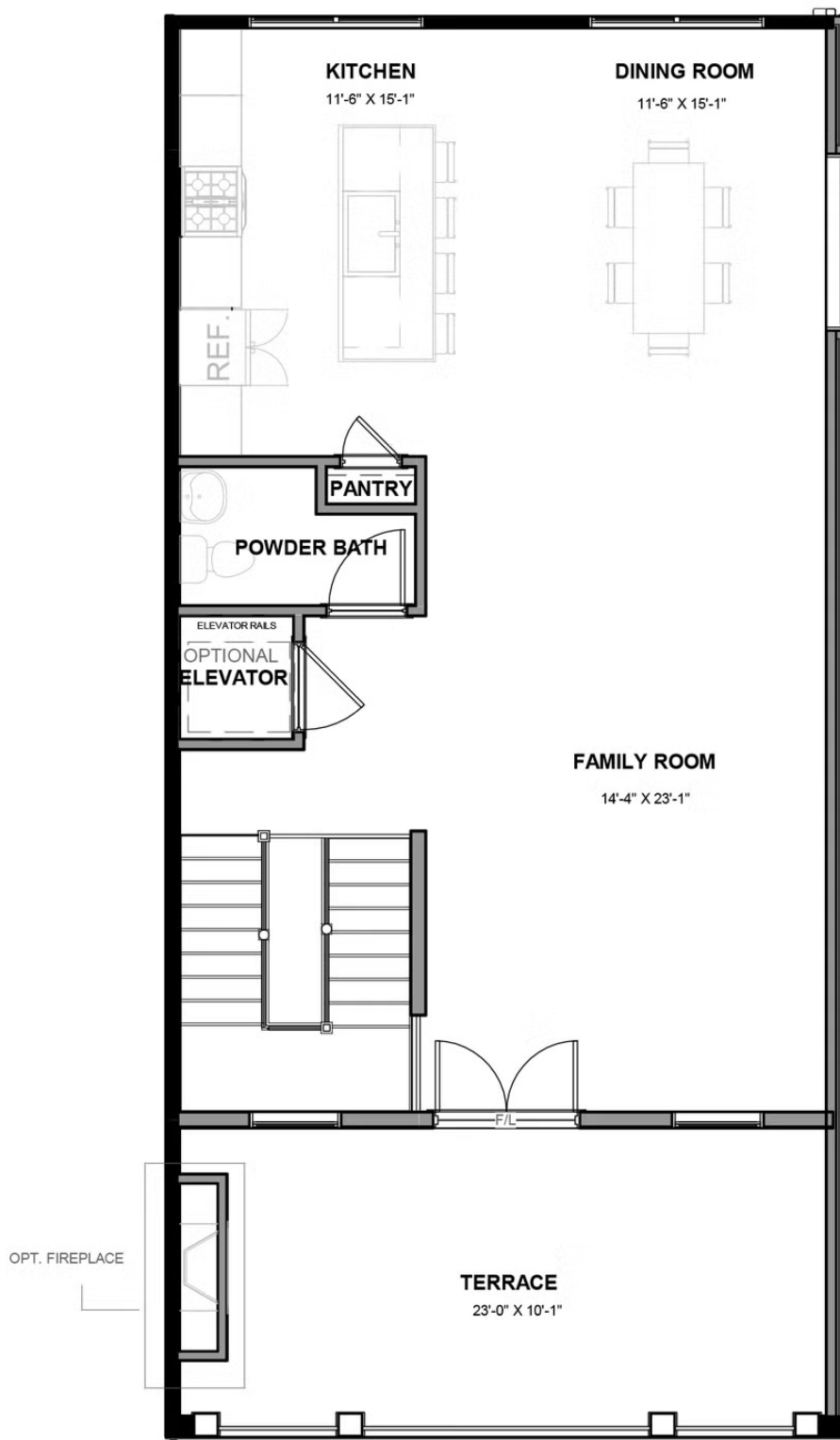
# 361-B Souldren Walk #21B

AT GREENGATE



# eagle

## FOURTH FLOOR



[eagleofva.com](http://eagleofva.com)

This information is deemed reliable but not guaranteed. All details, dimensions, square footage, illustrations and pricing are approximate and may vary from actual plans and specifications. Contact an Eagle Sales Consultant for details. Current information as of 26th April 2024