





360-A Souldren Walk #22A

AT GREENGATE



-  2 Bedrooms
-  2.5 Bathrooms
-  1504 Square Feet
-  1 Car Garage

\$494,900



Welcome to modern urban living like never before with the Arlington, a 2-level, 2-bedroom condo offering 1,504 square feet of space. Arrive home to your private 1-car garage and step into your kitchen and open living room ready for relaxing or entertaining. A half-bath powder room completes the first floor. Step up the open stairwell to the second floor where your primary suite awaits with dual-sink bath, ceramic tile shower with bench seat, and generous walk-in closet. Here you'll also find an additional bedroom, full bath, laundry, and flexible loft space that leads out to a rear outside deck ready for kicking back and soaking up the good life.

Features of this Home

- End unit
- Loft
- Deck
- Ceramic tile shower with bench seat

eagleofva.com

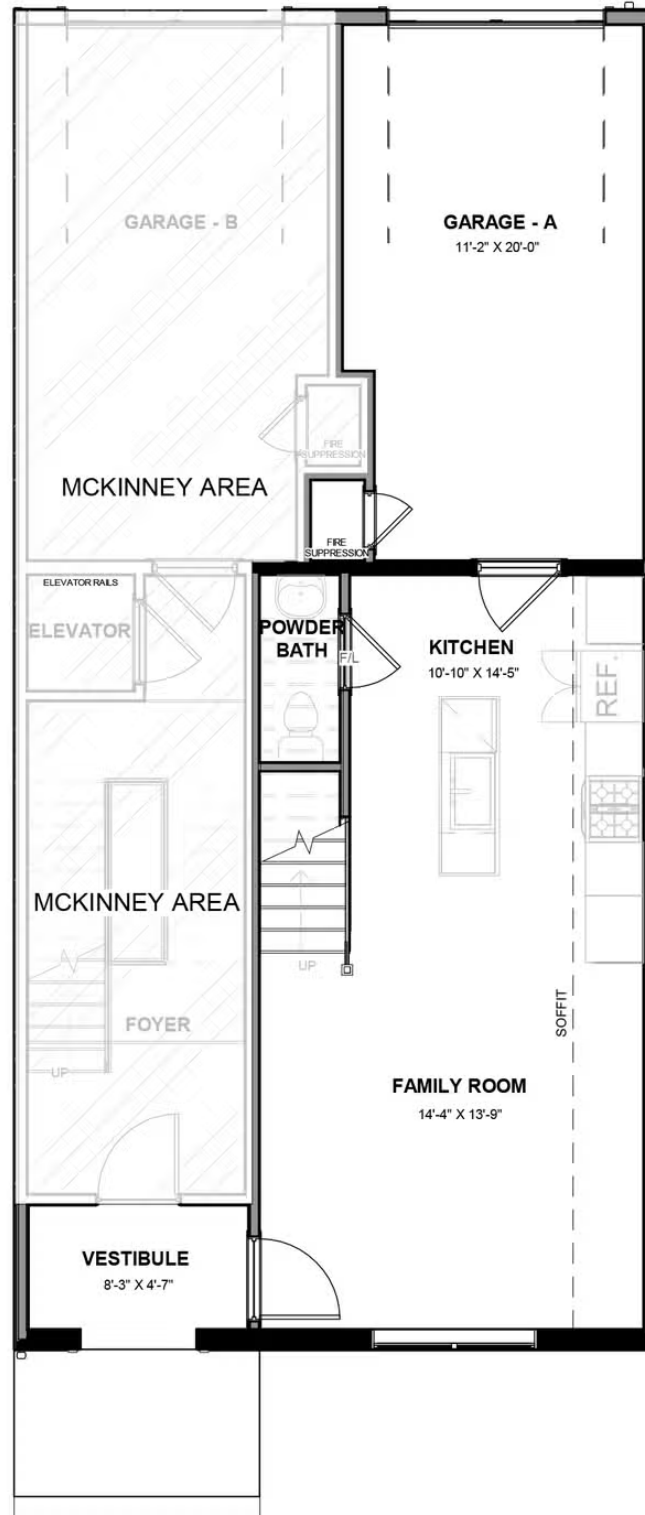
360-A Souldren Walk

#22A

AT GREENGATE



FIRST FLOOR



eagleofva.com

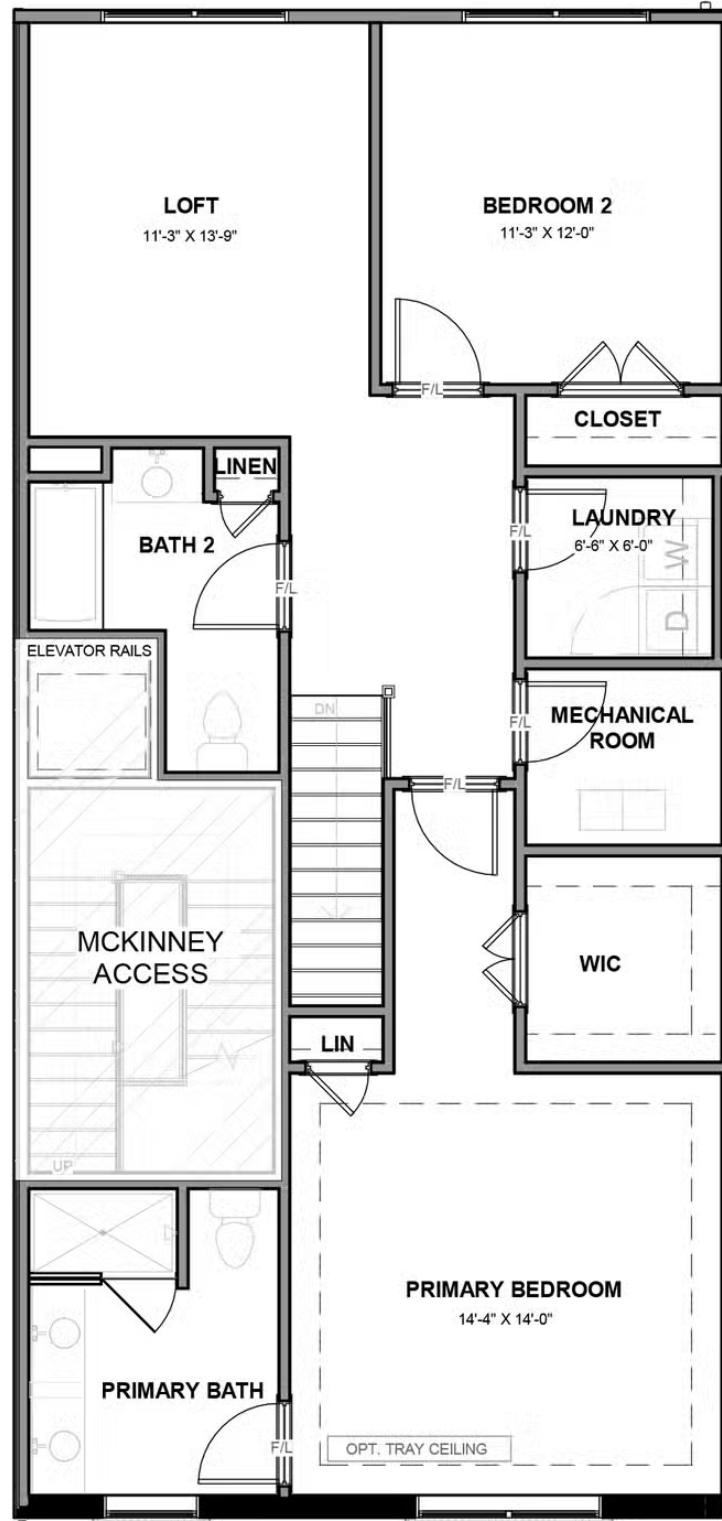
360-A Souldren Walk

#22A

AT GREENGATE



SECOND FLOOR



eagleofva.com