





3504 Ormiston Grove Circle

AT GREENGATE



-  3 Bedrooms
-  4.0 Bathrooms
-  4925 Square Feet
-  2 Car Garage

\$1,800,000



Introducing the Manhattan floor plan—a luxurious blend of traditional sensibility and modern style. This custom-built 4,925 square foot home home with first floor primary bedroom by CIRCLE Design Studio reimagines Richmond's conventional design with artistic metropolitan flair. Standout features include a floor-to-ceiling encased glass wine column, a dramatic open-riser metal staircase, ultra-modern kitchen & bathrooms with traditional trim, a unique dual-island layout, indoor/outdoor living with NanaWall folding glass walls, a full basement including theater room and bar with dramatic tray ceilings, and energy-efficient solar panels. Experience the extraordinary in this meticulously crafted home that seamlessly marries elegance and contemporary living. More to love, this home is being sold partially FURNISHED!

Features of this Home

- Floor-to-ceiling encased glass wine column with LED lighting
- Dramatic open-riser metal staircase with natural wood treads
- Ultra-modern Kitchen and Bathrooms juxtaposed with traditional trim and texture ceiling details
- Unique dual-island layout
- Indoor/outdoor living with two integrated NanaWalls
- Media Room with coffered ceiling and modern wall scone accent

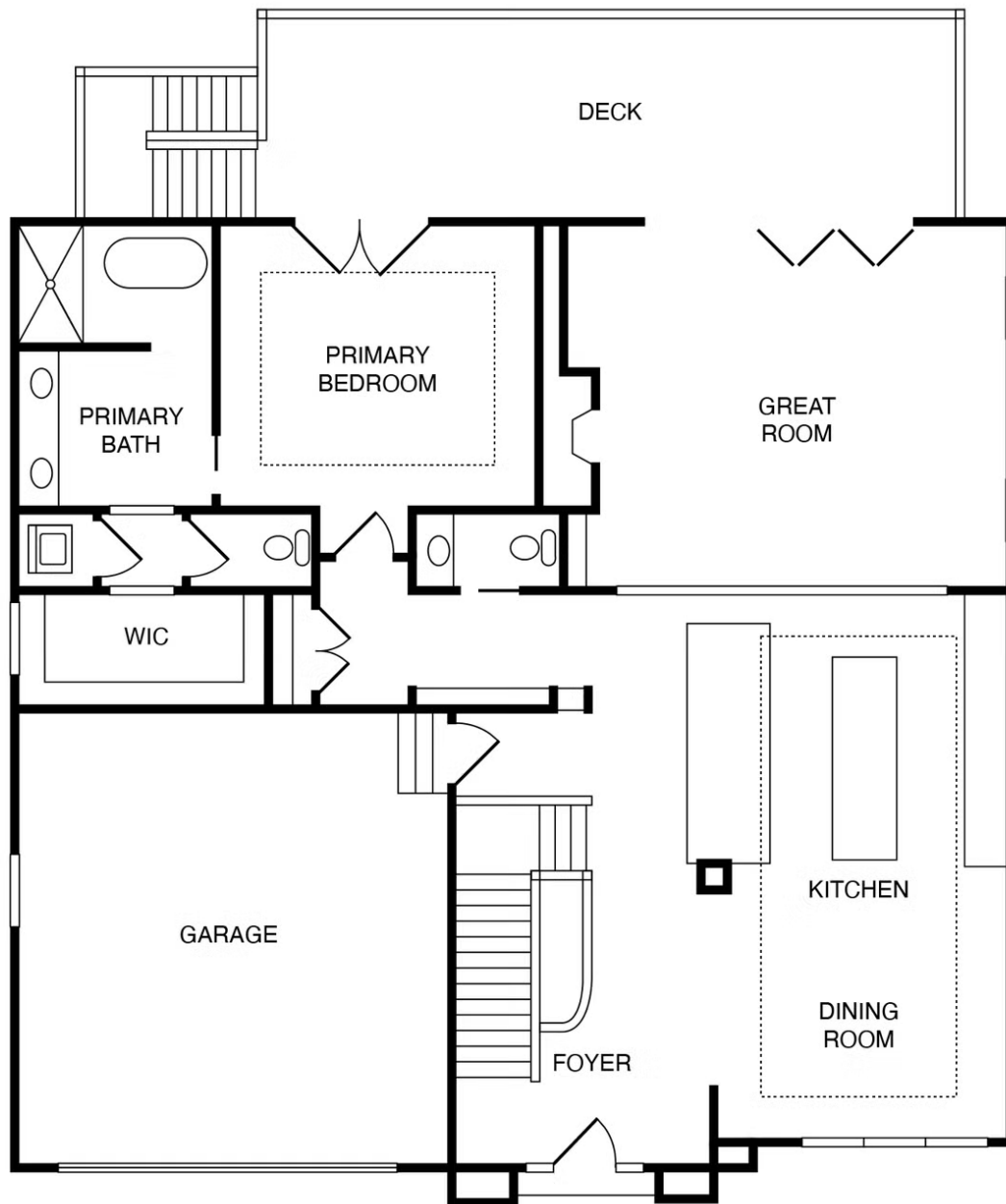
eagleofva.com

3504 Ormiston Grove Circle

AT GREENGATE



FIRST FLOOR



eagleofva.com

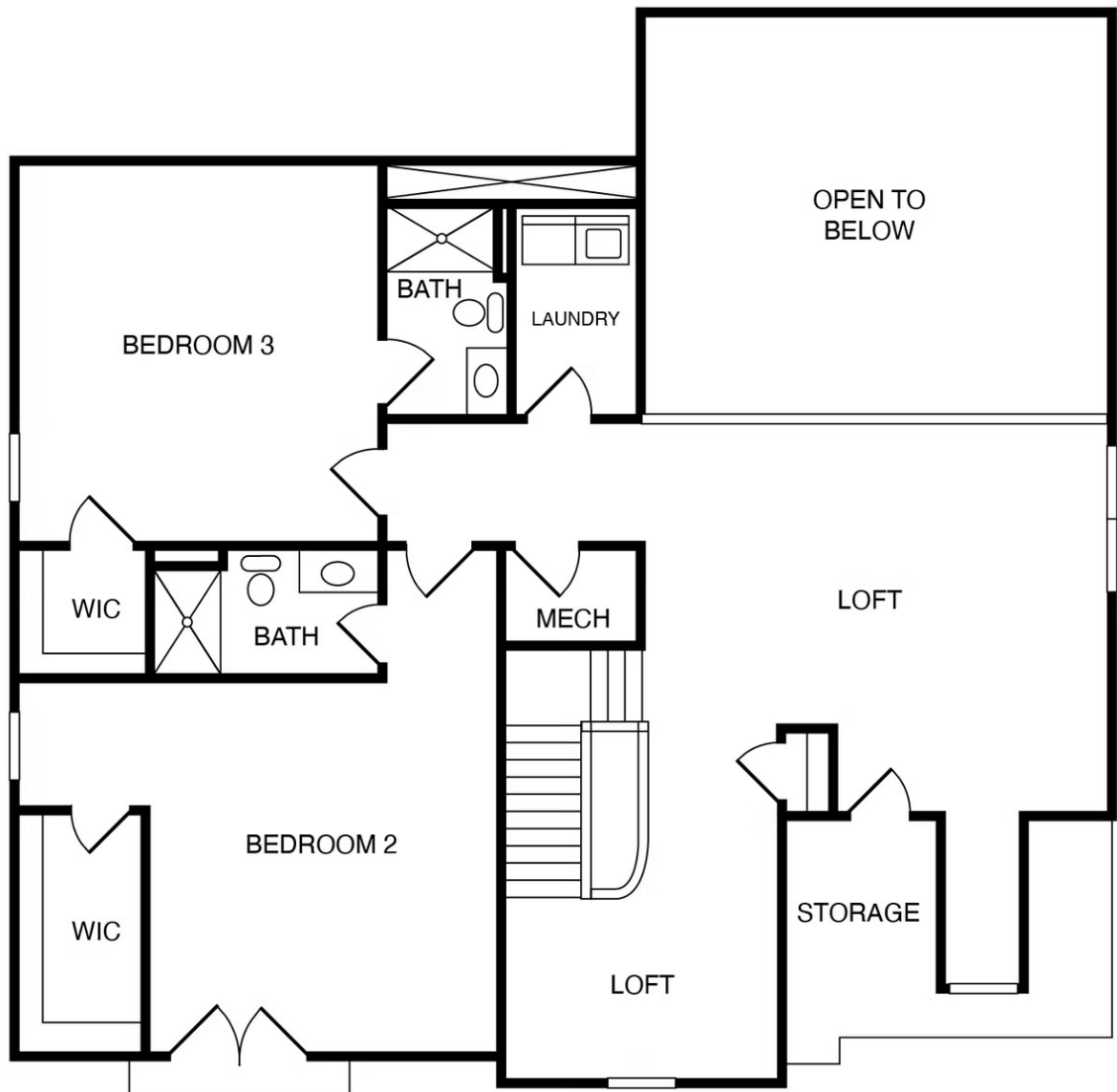
This information is deemed reliable but not guaranteed. All details, dimensions, square footage, illustrations and pricing are approximate and may vary from actual plans and specifications. Contact an Eagle Sales Consultant for details. Current information as of 8th May 2024

3504 Ormiston Grove Circle

AT GREENGATE



SECOND FLOOR



eagleofva.com

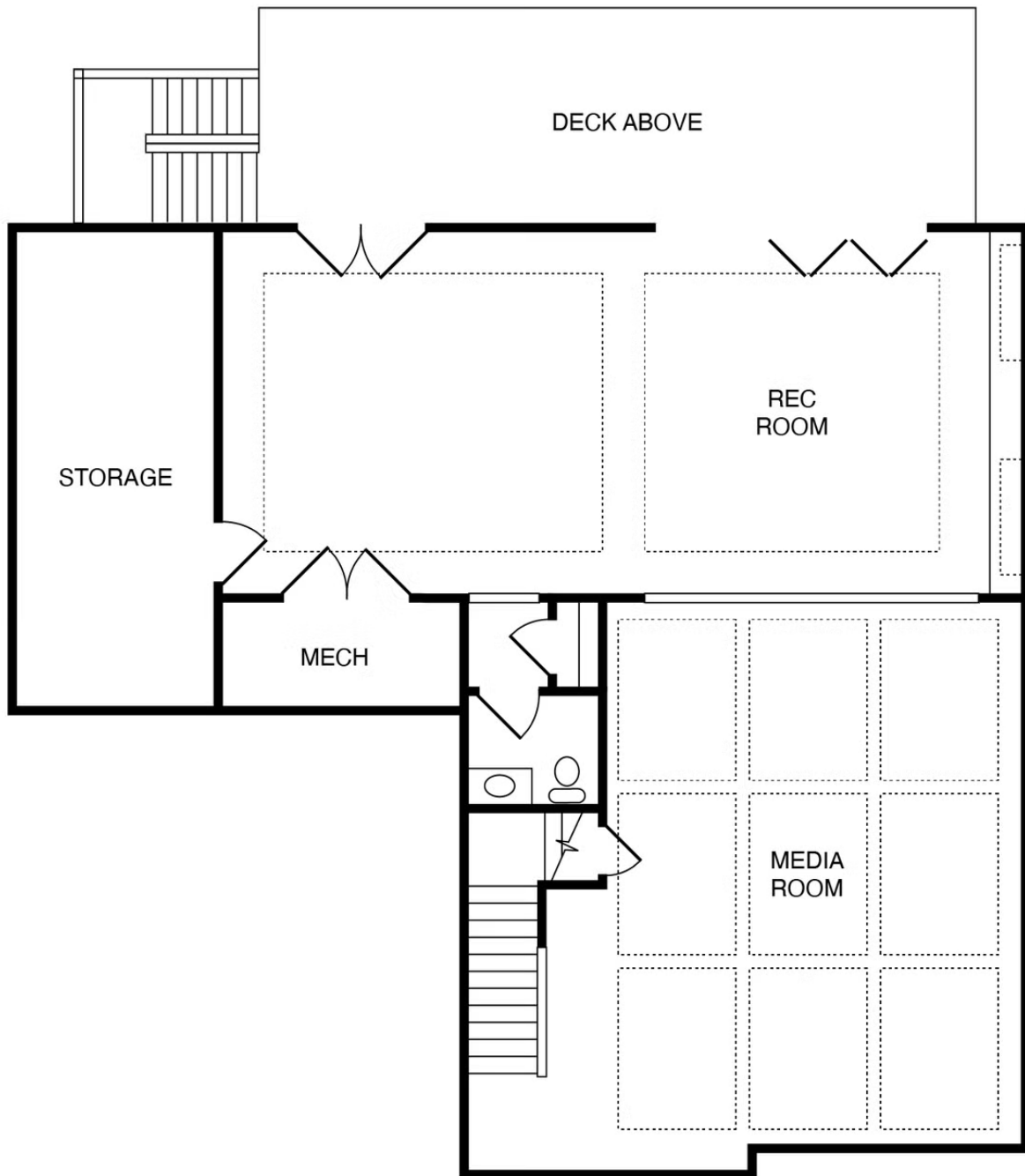
This information is deemed reliable but not guaranteed. All details, dimensions, square footage, illustrations and pricing are approximate and may vary from actual plans and specifications. Contact an Eagle Sales Consultant for details. Current information as of 8th May 2024

3504 Ormiston Grove Circle

AT GREENGATE



BASEMENT



eagleofva.com

This information is deemed reliable but not guaranteed. All details, dimensions, square footage, illustrations and pricing are approximate and may vary from actual plans and specifications. Contact an Eagle Sales Consultant for details. Current information as of 8th May 2024