





3321 Haydenpark Lane

AT GREENGATE



-  3 Bedrooms
-  3.5 Bathrooms
-  3033 Square Feet
-  2 Car Garage

\$954,260



Move up—and over—to deluxe with the Rowland. This spacious 4-story end unit townhome blends exquisite craftsmanship, exacting detail, and a flair for modern urban living—all with the 'side benefits' of additional windows offering more natural light and views. Arrive home to your private 2-car garage and step into the ground floor foyer convenient bedroom and full bath. The second level is first class when it comes to relaxing and entertaining, with its masterful flow from dining room to kitchen to family room, and further outward to a large welcoming deck.

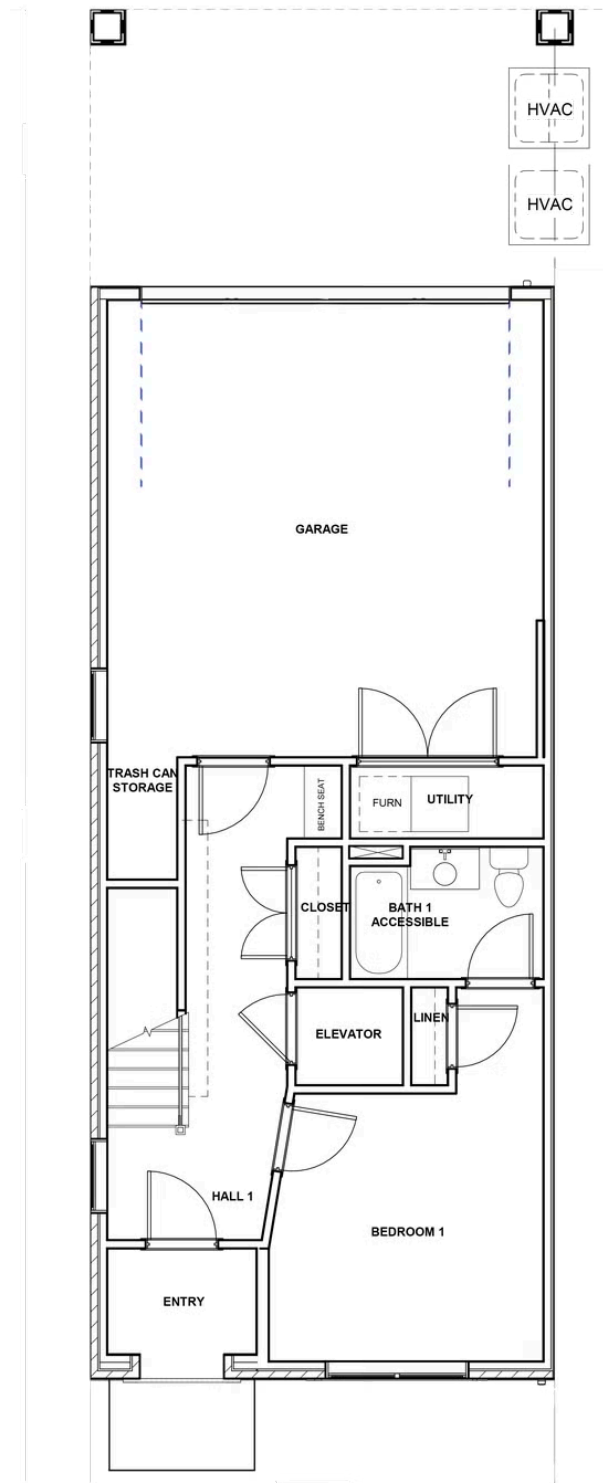
Move up to the third floor where the entire floor is your owner's suite: primary bedroom, ultimate bathroom with dual-sinks, generous walk-in closet, and convenient laundry room. And there's more to go! Step up to the fourth floor and into a large media room offering access to an amazing terrace with fireplace. A third bedroom and full bath completes the top floor.

Features of this Home

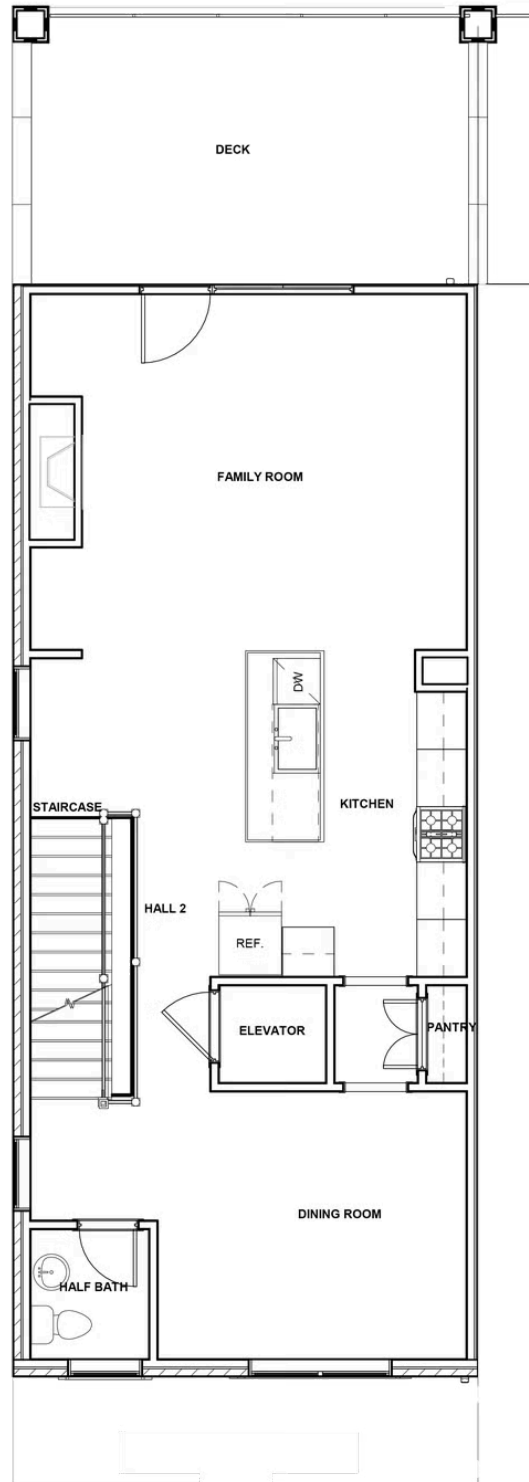
- Owner's Suite Layout
- Rear Covered Terrace with NanaWall and Gas Fireplace
- Hardwoods throughout
- Mezzo Fireplace with Brick Surround in Family Room
- Built-In Cabinets in Family Room

eagleofva.com

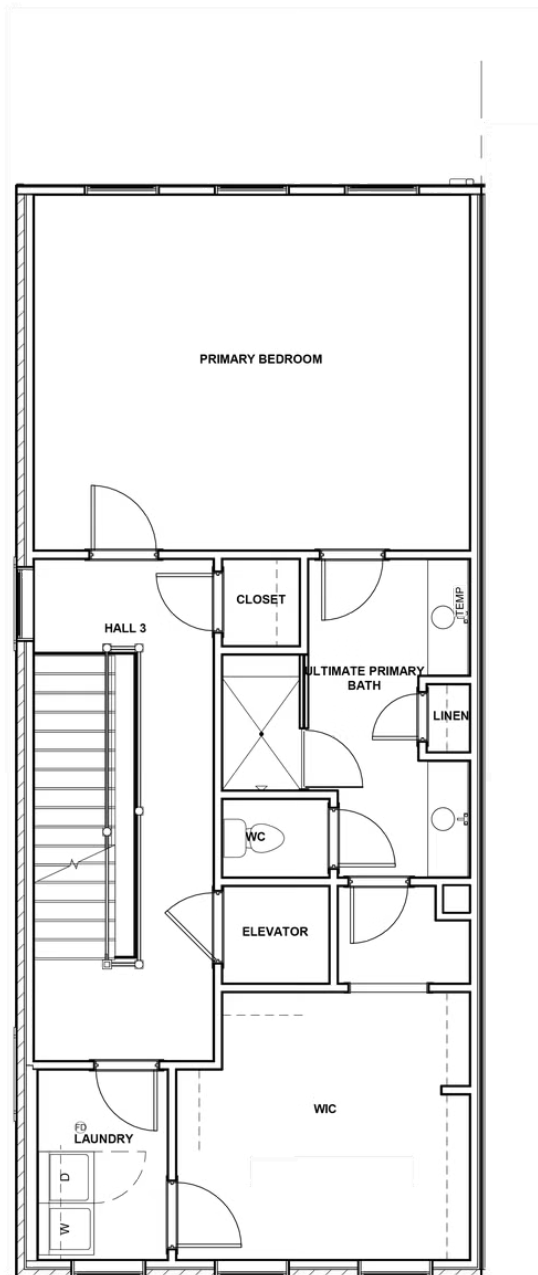
FIRST FLOOR



SECOND FLOOR



THIRD FLOOR



FOURTH FLOOR

