





12328 Graham Meadows Dr.

AT GREENGATE



-  4 Bedrooms
-  4.5 Bathrooms
-  3533 Square Feet
-  2 Car Garage

\$918,145



The townhome other homes dream of, the Malvern redefines spaciousness with a multi-level flow teeming with exquisite craftsmanship, authentic details, and flair for modern urban-style living. Offering the end unit benefits of additional windows and natural light. A 2-car garage welcomes you to the ground floor foyer with bedroom and full bath. The second level is first class when it comes to relaxing and entertaining, with its masterful flow from dining room to kitchen to family room, and further outward to a large welcoming deck. Move up to the third floor and the comforts of your primary suite with luxurious dual-sink bath and jaw-dropping walk-in closet. A second bedroom and full bath, as well as laundry also call this floor home. The fourth floor will quickly become your favorite with its large media room and amazing rooftop terrace, with an optional fireplace for year-round relaxation. A fourth bedroom and full bath completes the top floor. Ready for personalization from top to bottom, you can even add an elevator for enhanced convenience—and swank-factor!

Features of this Home

- Elevator option to fourth floor
- Rear covered terrace with fireplace and NanaWall
- Butler's pantry with direct flow to kitchen and dining room
- Rear load 2-car garage
- Still time to pick your finishes!

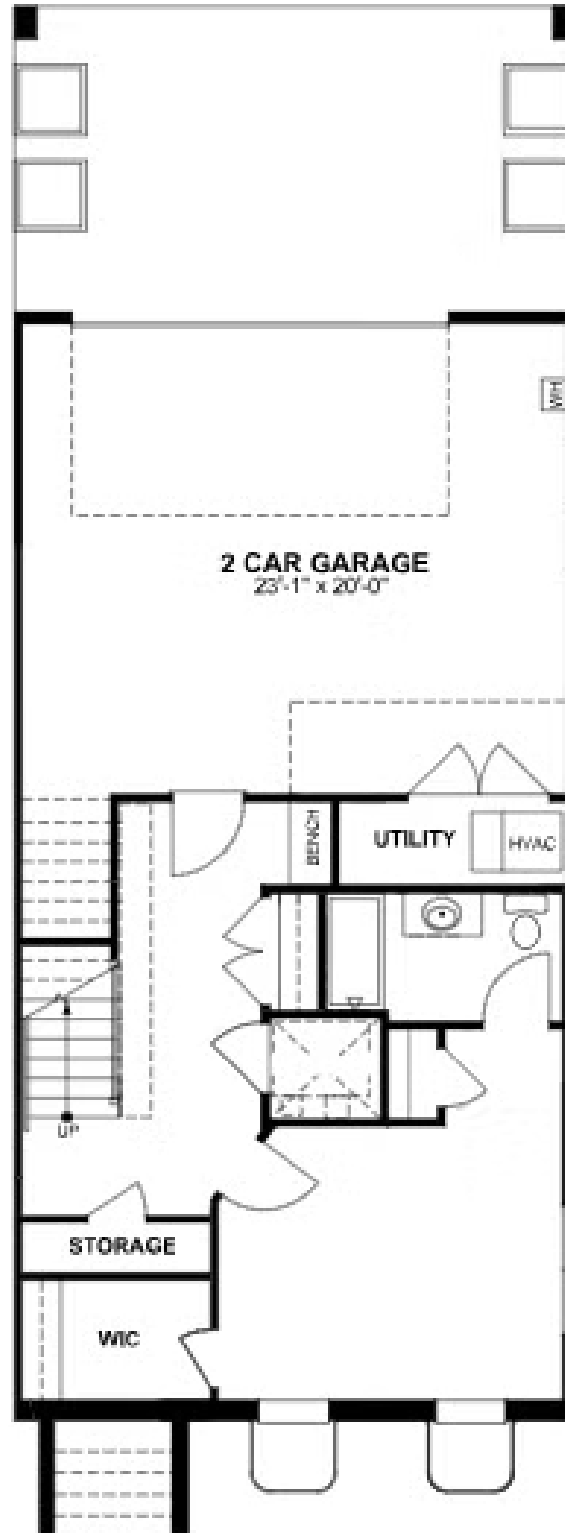
eagleofva.com

12328 Graham Meadows Dr.

AT GREENGATE



FIRST FLOOR



eagleofva.com

12328 Graham Meadows Dr.

AT GREENGATE



SECOND FLOOR

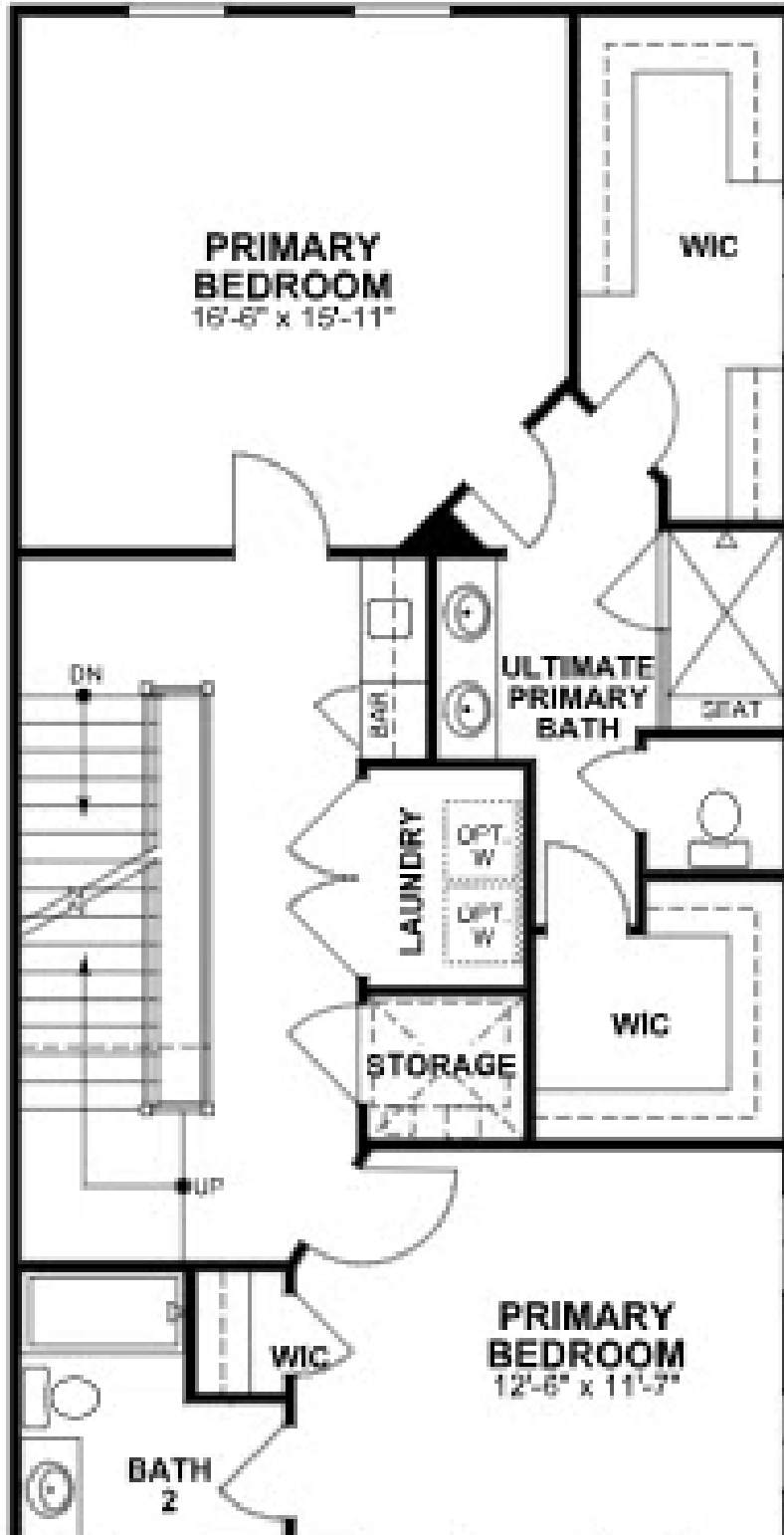


eagleofva.com

12328 Graham Meadows Dr. AT GREENGATE



THIRD FLOOR

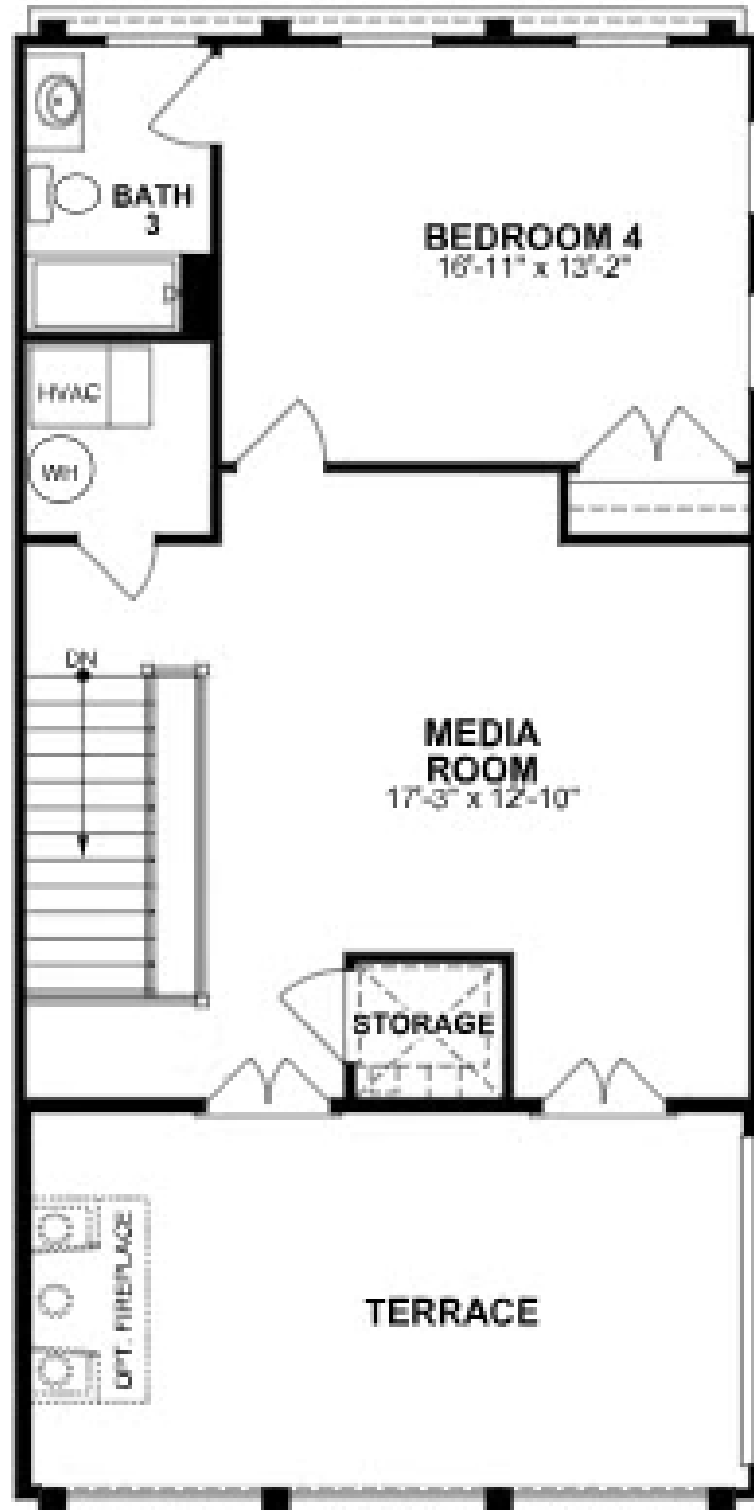


eagleofva.com

12328 Graham Meadows Dr. AT GREENGATE



FOURTH FLOOR



eagleofva.com

This information is deemed reliable but not guaranteed. All details, dimensions, square footage, illustrations and pricing are approximate and may vary from actual plans and specifications. Contact an Eagle Sales Consultant for details. Current information as of 8th May 2024