






THE Belmont Terrace

AT WEST BROAD VILLAGE



-  2 - 4 Bedrooms
-  2.5 - 3 Bathrooms
-  1,849 Square Feet
-  2 Car Garage
-  2 Levels



The Belmont Terrace is a 2 story new home floor plan with 3-4 bedrooms, 3.5 bathrooms, and a 2-car garage. This unique plan allows you to enter on the main floor which features an open-flowing dining room and living room perfect for entertaining. This large space flows directly into the Kitchen with the option to add an island. The primary bedroom suite is also on this level with a luxurious walk-in closet and spacious primary bathroom. There is also a second Bedroom that can be converted into a Den. You'll head down the stairs to the terrace level where there are huge unfinished storage spaces. These spaces can be converted into a bedroom, a media room, or a large recreation room.

eagleofva.com

THE Belmont Terrace

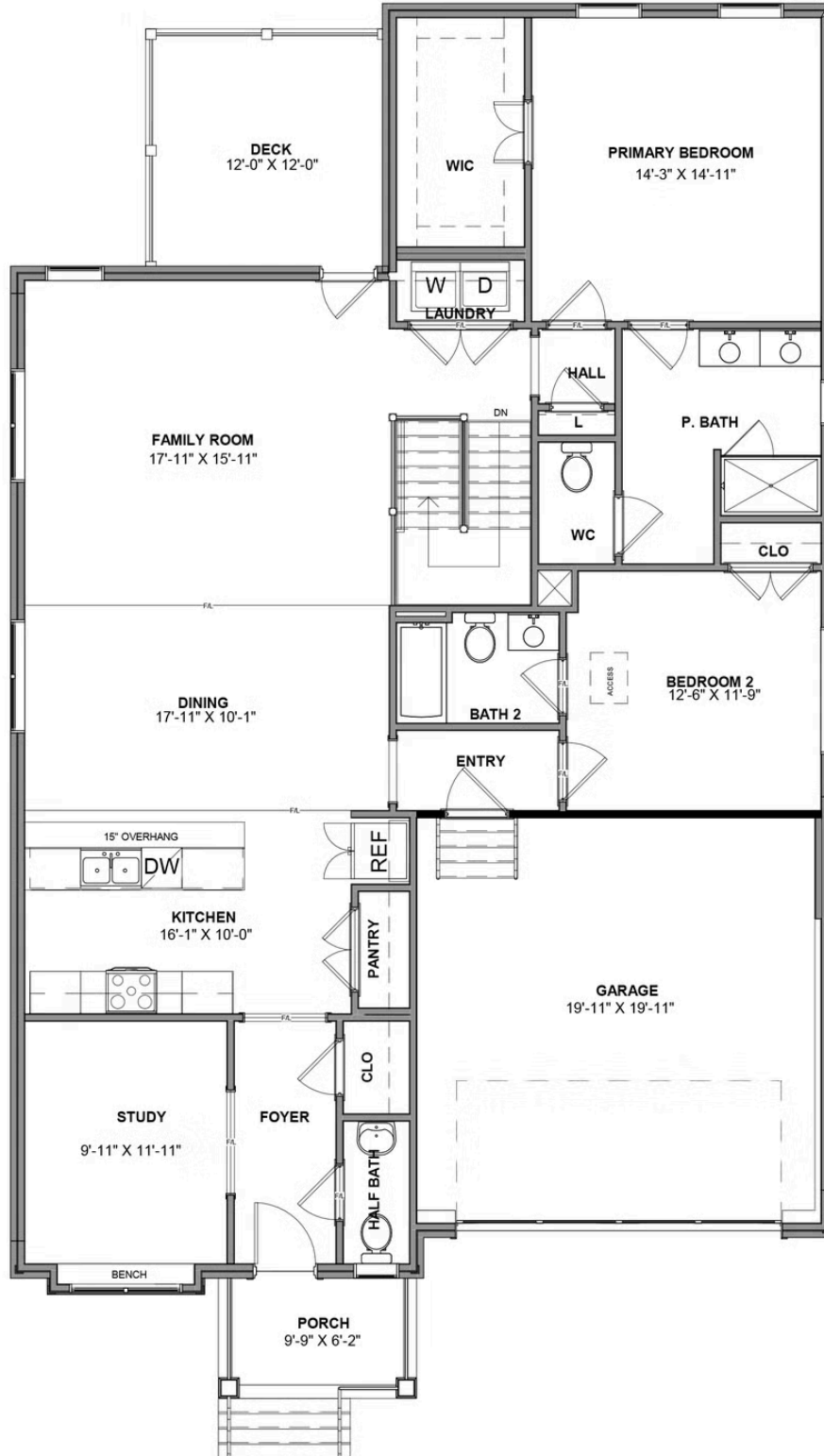
AT WEST BROAD VILLAGE



eagleofva.com

This information is deemed reliable but not guaranteed. All details, dimensions, square footage, illustrations and pricing are approximate and may vary from actual plans and specifications. Contact an Eagle Sales Consultant for details. Current information as of 9th May 2026

MAIN LEVEL



TERRACE LEVEL

