





3932 Lantern View Place

AT WEST BROAD VILLAGE



-  3 Bedrooms
-  3.5 Bathrooms
-  2956 Square Feet
-  2 Car Garage

\$999,469



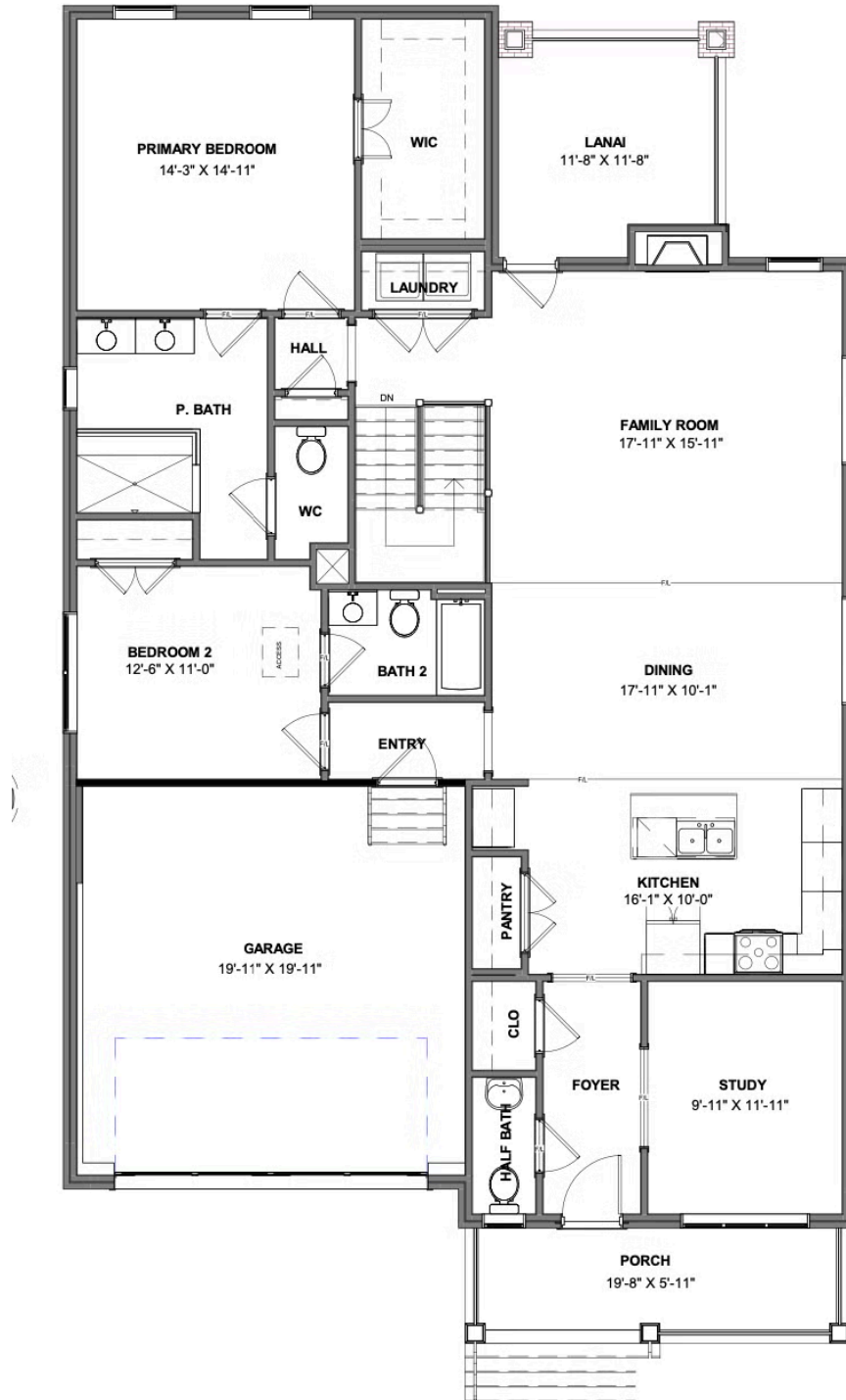
The Belmont Terrace is a 2 story new home floor plan with 3 bedrooms, 3.5 bathrooms, and a 2-car garage. This unique plan allows you to enter on the main floor which features a foyer and study. Continue to an open-flowing kitchen, dining room and living room perfect for entertaining. The primary bedroom suite is also on this level with a luxurious walk-in closet and spacious primary bathroom. There is also a convenient second bedroom and full bath. You'll head down the stairs to the terrace level which features a large rec area, play/media room, third bedroom, full bath, and two unfinished conditioned storage areas.

Features of this Home

- Full Brick Exterior
- First Floor Primary Bedroom Suite with Serenity Bath and Large Walk-in Closet
- Study
- Luxury Countertops, Stainless Steel Appliances including Drawer Microwave, and Under Cabinet Lighting with Dimmer
- Designer Tile Backsplash
- Pendant Lights Above Kitchen Island
- Gas Fireplace in Family Room
- LED Recessed Lighting Package with Dimmer Switch in Family Room, Primary Bedroom, and Media Room
- Hardwood Stairs to Lower Level

eagleofva.com

MAIN LEVEL



TERRACE LEVEL

